




5 Pendyffryn Road, Rhyl, LL18 4RU

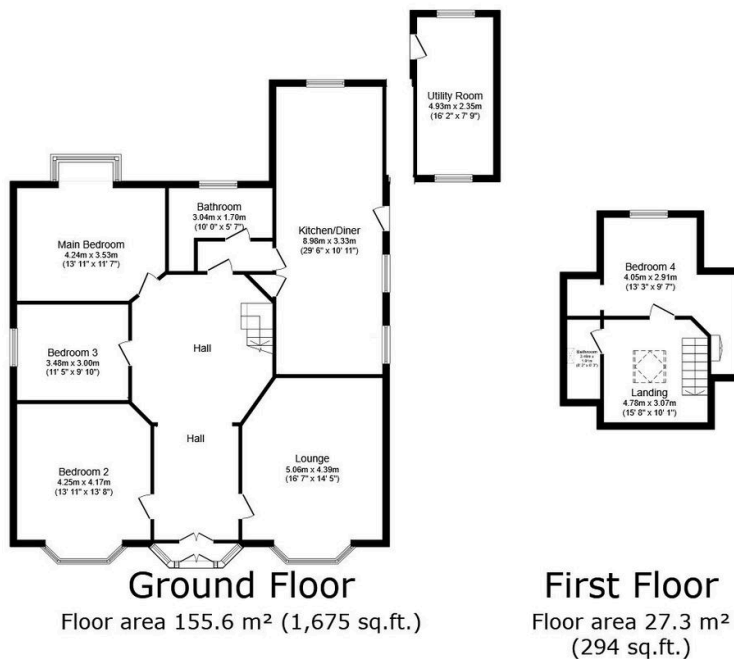
Offers In Region Of £370,000

 4  2  2



We are thrilled to present this immaculate detached dormer bungalow for sale in the desirable area of South Rhyl. The property is within easy reach of public transport links and nearby schools, making daily commutes a breeze, being perfect for a variety of buyers. This property boasts a myriad of features that blend comfort and functionality seamlessly. The property comprises four well-proportioned bedrooms, lounge, two bathrooms and the heart of this home is undoubtedly the open-plan kitchen/diner, filled with natural light, making it a perfect spot for family meals. It comes complete with a beautiful landscaped south-facing rear garden, a perfect spot for outdoor relaxation, the former garage has been transformed into a large utility room with ample off street parking. Don't miss out on this fantastic opportunity to own a unique property such as this.

- Immaculately presented
- Four bedrooms
- Two bathrooms
- South Rhyl
- EPC - F (prior to home improvements) / Council tax - F
- Detached dormer bungalow
- Kitchen with dining room
- Large utility
- Freehold
- Date - 19/02/2025



TOTAL: 182.9 m² (1,969 sq.ft.)

This floor plan is for illustrative purposes only. It is not drawn to scale. Any measurements, floor areas (including any total floor area), openings and orientations are approximate. No details are guaranteed, they cannot be relied upon for any purpose and do not form any part of any agreement. No liability is taken for any error, omission or misstatement. A party must rely upon its own inspection(s). Powered by www.Propertybox.io