

PETER LARGE

ESTATE AGENTS

72 Victoria Road, Rhyl, LL18 2EH

£90,000

2 1 1



This terraced house, now available for sale, presents an exciting opportunity for first-time buyers or investors alike. The property requires modernisation, offering the perfect chance to create a bespoke living environment that suits your taste and lifestyle. The accommodation comprises two spacious double bedrooms, lounge, kitchen and ground floor bathroom. Located in an area with local amenities, being near schools and walking distance of the town centre.

rhyl@peterlarge.com

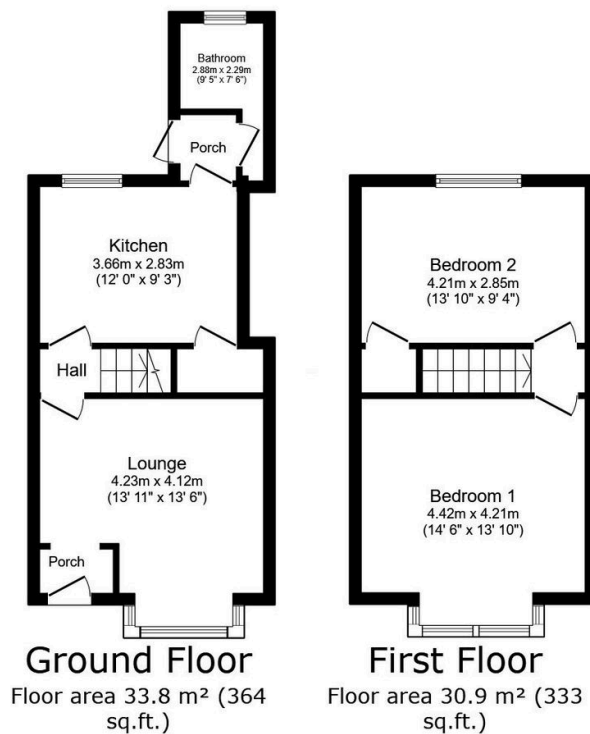
| 01745 334411

| www.peterlarge.com

19 CLWYD STREET, RHYL, DENBIGHSHIRE, LL18 3LA

Key Features

- Two double bedrooms
- Ground floor bathroom
- On street parking
- Freehold
- Please ask about purchasing criteria
- Terraced house
- In need of moderisation
- Enclosed rear yard
- Council tax - B / EPC - C
- 27/11/2024



TOTAL: 64.7 m² (697 sq.ft.)

This floor plan is for illustrative purposes only. It is not drawn to scale. Any measurements, floor areas (including any total floor area), openings and orientations are approximate. No details are guaranteed, they cannot be relied upon for any purpose and do not form any part of any agreement. No liability is taken for any error, omission or misstatement. A party must rely upon its own inspection(s). Powered by www.Propertybox.io