

22 Dulas Avenue, Kinmel Bay, LL18 5LB

Offers In Region Of £360,000

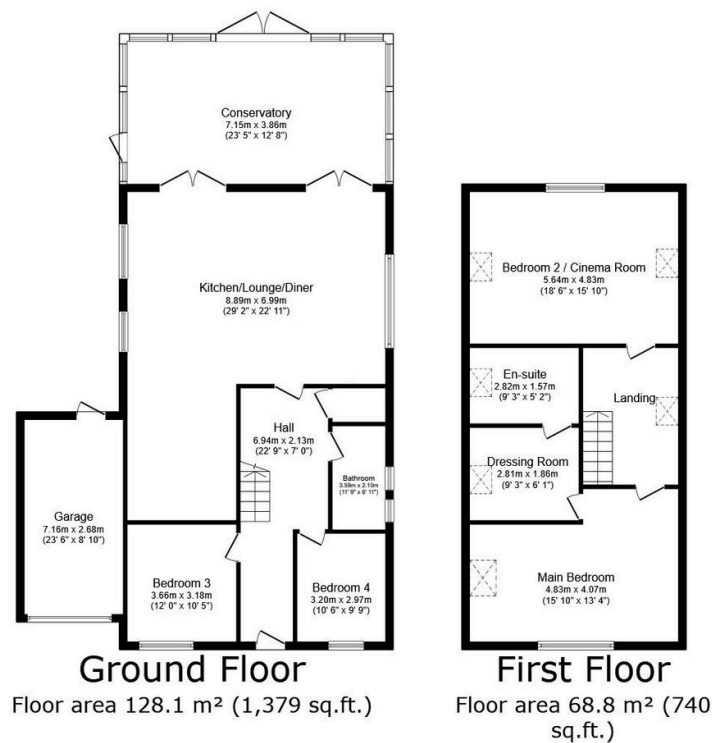
🛏 4 🚿 2 🚗 1



For sale is this well presented four double bedroom link detached house. The heart of this home is undoubtedly its open-plan kitchen with lounge and dining room adjacent, offering a seamless flow between rooms. The master bedroom with walk in dressing area and a generous en-suite. The remaining three bedrooms are equally as impressive. One of the many advantages of this property is the large landscaped rear garden with area for alfresco dining. It's ideally situated near schools, coastal path and local amenities, making it a perfect choice for families looking to settle in a convenient and friendly neighbourhood.

Key Features

- Link Detached
- Four double bedrooms
- Large landscaped rear garden
- En suite
- Council Tax- D / EPC - C
- Modern open-plan design
- Garage
- Walk in wardrobe
- Freehold
- Date: 16/09/2024



TOTAL: 196.9 m² (2,119 sq.ft.)

This floor plan is for illustrative purposes only. It is not drawn to scale. Any measurements, floor areas (including any total floor area), openings and orientations are approximate. No details are guaranteed, they cannot be relied upon for any purpose and do not form any part of any agreement. No liability is taken for any error, omission or misstatement. A party must rely upon its own inspection(s). Powered by www.Propertybox.io