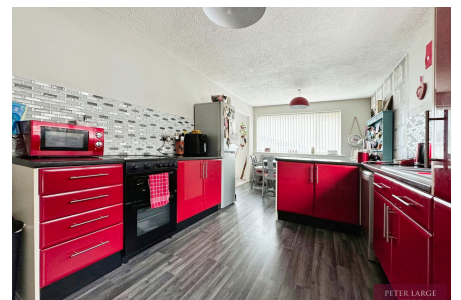


22 Graham Drive, Rhyl, Denbighshire LL18 3RT

£225,000

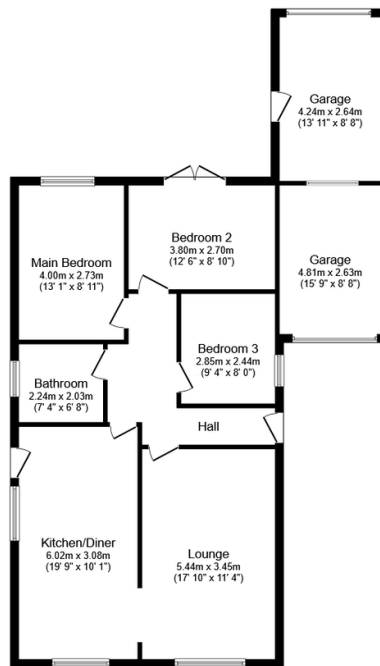
3 1 1



An opportunity has arisen to purchase a well maintained three bedroom detached bungalow close to the town of Rhyl. The property benefits from uPVC double glazing, gas central heating, large kitchen/diner, three good size bedrooms, garage, large garden store and gardens front and back. The town centre with its shops and public amenities is a short distance away as well as the beach and promenade. The property would suit a variety of buyers from the retirement market to a small family as schools catering for all age group are well catered for. Early viewing is recommended.

Key Features

- DETACHED BUNGALOW
- THREE DOUBLE BEDROOMS
- LARGE KITCHEN/DINER
- SOUGHT AFTER AREA
- GARDENS FRONT & REAR
- GARAGE & GARDEN STORE
- FREEHOLD
- COUNCIL TAX BAND - C
- EPC - D
- INSTRUCTED - 09/09/2024



Floor Plan

Floor area 103.2 sq.m. (1,110 sq.ft.)

TOTAL: 103.2 sq.m. (1,110 sq.ft.)

This floor plan is for illustrative purposes only. It is not drawn to scale. Any measurements, floor areas (including any total floor area), openings and orientations are approximate. No details are guaranteed, they cannot be relied upon for any purpose and do not form any part of any agreement. No liability is taken for any error, omission or misstatement. A party must rely upon its own inspection(s). Powered by www.Propertybox.io