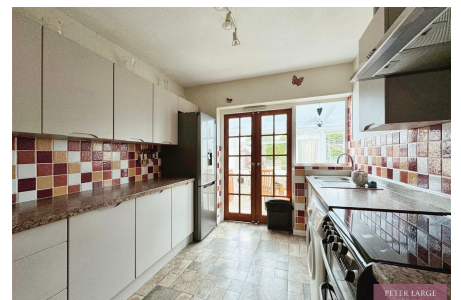
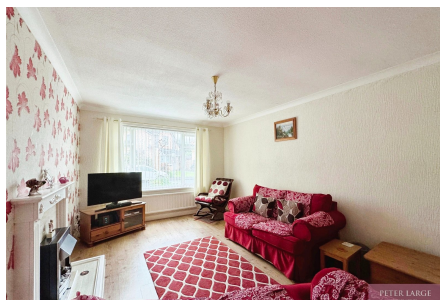


22 Lon Cwybr, Rhuddlan, LL18 2SX

£240,000

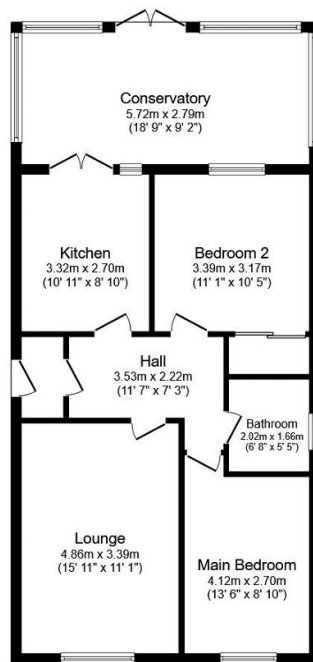
🛏 2 🚿 1 🚗 1



Presenting this immaculate, detached two bedroom bungalow. This charming property is nestled in the heart of the popular and historical village of Rhuddlan. The location offers a plethora of engaging activities, including quaint shops, walking routes, a medieval castle, and a golf course, all within easy reach with bus routes running nearby. With a large conservatory to the rear which looks out onto the pretty garden letting you relax in the peace and tranquillity. Don't miss out on the opportunity to own a piece of Rhuddlan's charm and history.

## Key Features

- Immaculate property
- Village location
- Lovely well manicured gardens
- Garage
- EPC - D
- Two bed detached bungalow
- Large conservatory to the rear
- Off street parking
- Freehold
- Date: 23/05/2024



### Floor Plan

Floor area 79.5 m<sup>2</sup> (855 sq.ft.)

TOTAL: 79.5 m<sup>2</sup> (855 sq.ft.)

This floor plan is for illustrative purposes only. It is not drawn to scale. Any measurements, floor areas (including any total floor area), openings and orientations are approximate. No details are guaranteed, they cannot be relied upon for any purpose and do not form any part of any agreement. No liability is taken for any error, omission or misstatement. A party must rely upon its own inspection(s). Powered by [www.Propertybox.io](http://www.Propertybox.io)