

12 Holly Close, Rhyl, LL18 4GF

£279,950

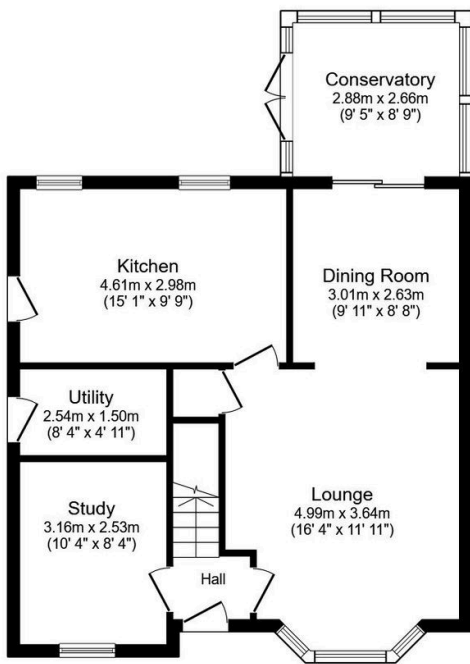
🛏️ 4 🚿 2 🚺 2



For sale is this immaculate 'ready to walk-into' detached family home, which boasts four bedrooms, bathroom, en-suite, two reception rooms, well equipped kitchen with breakfast area and rear conservatory. The property is ideally suitable for families, with its spacious accommodation and family-friendly location, being close to Doctors surgery, Dentist, local shop with schools catering for all ages within the area. Ample off street parking, and a large, well-kept rear garden, perfect for those who appreciate the tranquility or entertaining. It's not just a house, but a home filled with comfort and convenience.

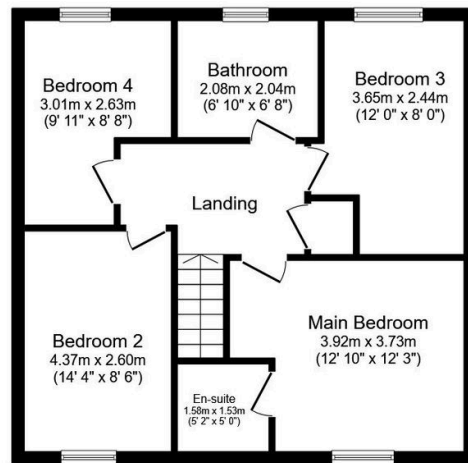
Key Features

- Immaculate 'ready to walk-into'
- Two reception rooms
- Large garden for entertaining
- Driveway
- EPC - C
- Four bedrooms with en-suite facility
- Rear conservatory
- Study and utility
- Freehold
- Date: 23/05/2023



Ground Floor

Floor area 66.8 m² (719 sq.ft.)



First Floor

Floor area 56.4 m² (608 sq.ft.)

TOTAL: 123.3 m² (1,327 sq.ft.)

This floor plan is for illustrative purposes only. It is not drawn to scale. Any measurements, floor areas (including any total floor area), openings and orientations are approximate. No details are guaranteed, they cannot be relied upon for any purpose and do not form any part of any agreement. No liability is taken for any error, omission or misstatement. A party must rely upon its own inspection(s). Powered by www.Propertybox.io