

PETER LARGE

ESTATE AGENTS

71 St Margarets Drive, Rhyl, Denbighshire, LL18 2LA

£135,000

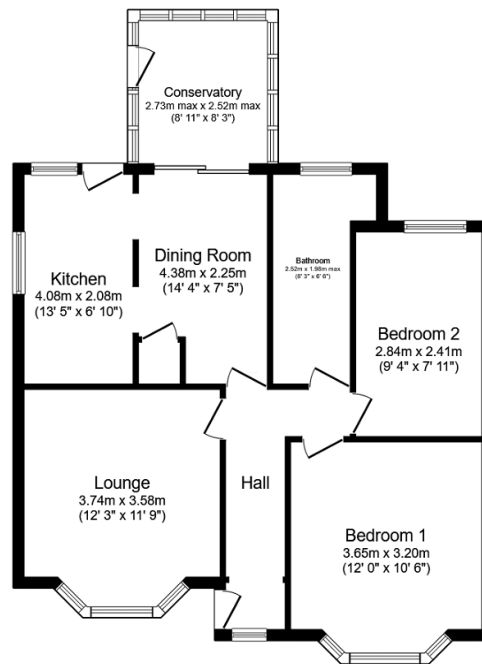
🛏 2 🚿 1 🛋 2



This traditional double fronted detached two bedroom bungalow is set in a quiet residential area close to the town of Rhyl with its shops and public amenities. Shops catering for most everyday needs are within walking distance and bus routes are within easy reach. The property would benefit from some cosmetic upgrading and would suite the retirement market or a small family as schools catering for all age groups are within walking distance. Viewing is highly recommended.

## Key Features

- DETACHED BUNGALOW
- DINING ROOM
- GARDENS FRONT AND BACK
- CLOSE TO TOWN
- EPC - E
- TWO BEDROOMS
- CONSERVATORY
- PARKING AND GARAGE
- COUNCIL TAX - C
- INSTRUCTED - 16/04/24



### Floor Plan

Floor area 78.9 m<sup>2</sup> (849 sq.ft.)

TOTAL: 78.9 m<sup>2</sup> (849 sq.ft.)

This floor plan is for illustrative purposes only. It is not drawn to scale. Any measurements, floor areas (including any total floor area), openings and orientations are approximate. No details are guaranteed, they cannot be relied upon for any purpose and do not form any part of any agreement. No liability is taken for any error, omission or misstatement. A party must rely upon its own inspection(s). Powered by [www.Propertybox.io](http://www.Propertybox.io)