

18 Dyserth Road, Rhyl, Denbighshire, LL18 4DP

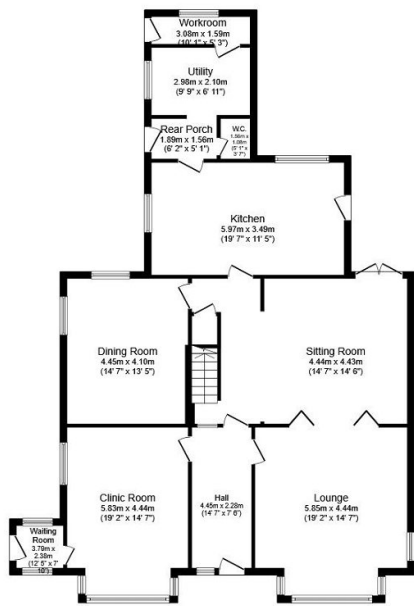
£380,000

🛏 5 🚗 2 🚲 3



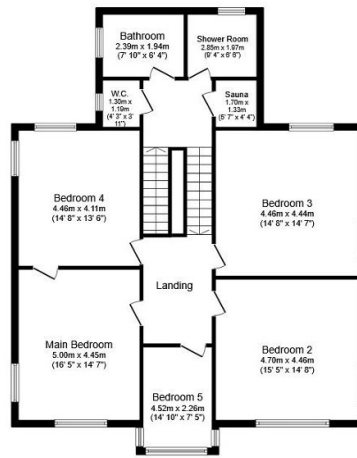
This large detached impressive property stands in well kept gardens and offers a large family home with an element of commercial rooms attached. Although this impressive building requires some modernisation, it offers an opportunity to create a beautiful, personalised space. The residence boasts sauna, five bedrooms, each with unique features, four are spacious doubles, while the fifth is characterised by a stunning feature window, offering an abundance of natural light and local views. The kitchen is a sizeable space with a utility room off. Three reception rooms, the first is a classical charm with large windows, the second with its open-plan layout, high ceilings and a captivating garden view, the third doubles as a formal dining room. This large residential property is set within good size grounds. Large drive, garage and recreational room. The location is highly desirable, with easy access to public transport links, nearby schools, local amenities.

- No forward chain
- Multi-use recreational room to rear
- Large rear garden
- Ample off street parking
- EPC-TBC
- Large Family home
- Detached garage
- Sauna
- Council Tax- D
- Instructed 16/04/2024



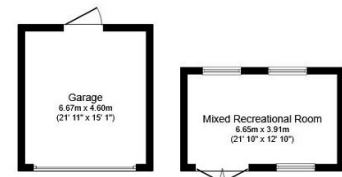
Ground Floor

Floor area 136.4 m² (1,468 sq.ft.)



First Floor

Floor area 113.5 m² (1,221 sq.ft.)



Outbuilding

Floor area 28.4 m² (306 sq.ft.)

TOTAL: 278.2 m² (2,995 sq.ft.)

This floor plan is for illustrative purposes only. It is not drawn to scale. Any measurements, floor areas (including any total floor area), openings and orientations are approximate. No details are guaranteed, they cannot be relied upon for any purpose and do not form any part of any agreement. No liability is taken for any error, omission or misstatement. A party must rely upon its own inspection(s). Powered by www.Propertybox.io