

8 Glendower Court, Rhyl, Denbighshire LL18 3SG

£130,000

🛏 2 🚿 1 🛋 1

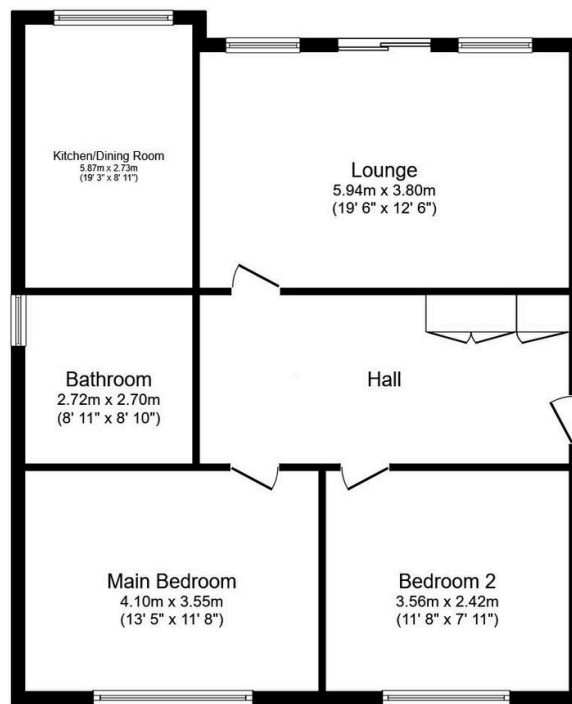


An opportunity to purchase a well maintained first floor two bedroom apartment situated in a coastal position with sea views. This apartment stands within a popular development and enjoys well maintained communal gardens. Rhyl Town centre is within a short distance with its shops and facilities and the Promenade offers ample recreational facilities. The property benefits by way of an allocated parking space and storage shed. Viewing is highly recommended.

PETER LARGE

ESTATE AGENTS

- FIRST FLOOR APARTMENT
- TWO BEDROOMS
- SPECTACULAR SEA VIEWS
- BALCONY
- LARGE LOUNGE
- KITCHEN/DINER
- ALLOCATED PARKING SPACE
- LEASEHOLD
- COUNCIL TAX BAND - C
- Reviewed 10/09/2025



Floor Plan

Total floor area 90.9 m² (979 sq.ft.) approx

This plan is for illustration purposes only and may not be representative of the property. Plan not to scale. Powered by PropertyBox

CONSUMER PROTECTION REGULATIONS 2008 AND THE BUSINESS PROTECTION FROM MISLEADING MARKETING REGULATIONS 2008

These particulars, whilst believed to be accurate, are set out for guidance only and do not constitute any part of an offer or contract. Prospective purchasers or tenants should not rely on these particulars as statement or representation of fact, but must satisfy themselves by inspection or otherwise as to their accuracy. No person in the employment of PETER LARGE Estate Agents has the authority to make or give any representation or warranty in relation to the property. Room sizes are approximate and all comments are of the opinion of PETER LARGE Estate agents having carried out a walk through inspection. These sales particulars are prepared under the consumer regulations 2008 and are governed by the business from misleading marketing regulations 2008.