

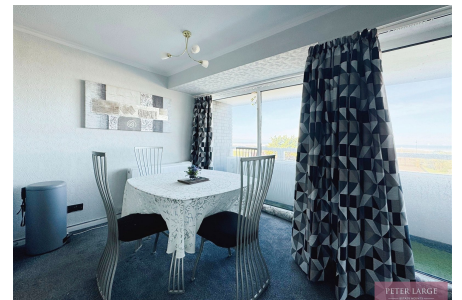
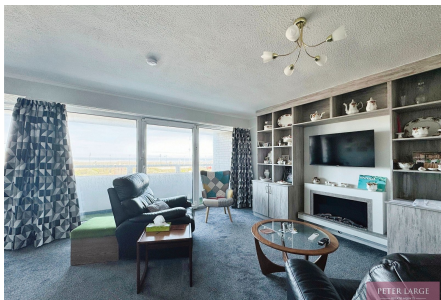
PETER LARGE

ESTATE AGENTS

8 Glendower Court, Rhyl, Denbighshire LL18 3SG

£140,000

🛏 2 🍴 1 🚗 1



An opportunity to purchase a well maintained first floor two bedroom apartment situated in a coastal position with sea views. This apartment stands within a popular development and enjoys well maintained communal gardens. Rhyl Town centre is within a short distance with its shops and facilities and the Promenade offers ample recreational facilities. The property benefits by way of an allocated parking space and storage shed. Viewing is highly recommended.

rhyl@peterlarge.com

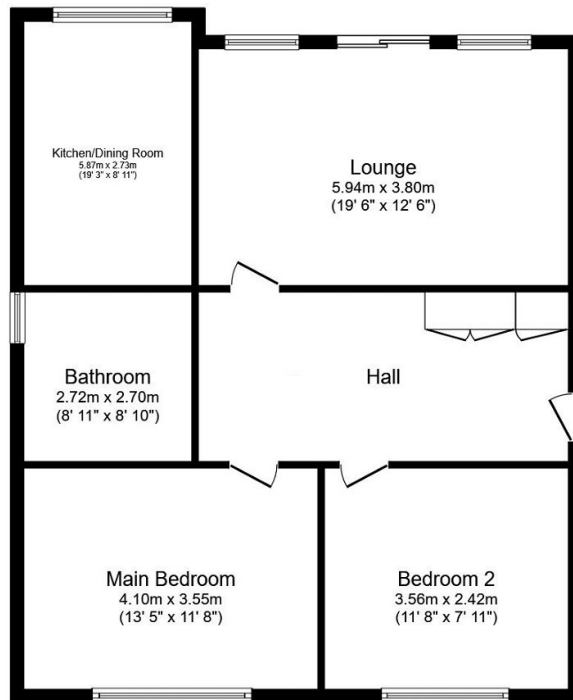
| 01745 334411

| www.peterlarge.com

19 CLWYD STREET, RHYL, DENBIGHSHIRE, LL18 3LA

Key Features

- FIRST FLOOR APARTMENT
- SPECTACULAR SEA VIEWS
- LARGE LOUNGE
- ALLOCATED PARKING SPACE
- COUNCIL TAX BAND - C
- TWO BEDROOMS
- BALCONY
- KITCHEN/DINER
- LEASEHOLD
- EPC - D



Floor Plan

Total floor area 90.9 m² (979 sq.ft.) approx

This plan is for illustration purposes only and may not be representative of the property. Plan not to scale. Powered by PropertyBox