

46 Grosvenor Avenue, Rhyl, Denbighshire, LL18 4HB

Offers In Region Of £165,000

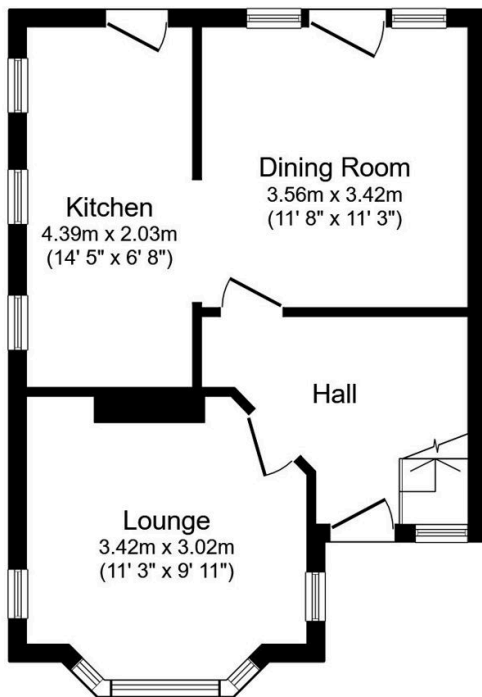
3 1 2



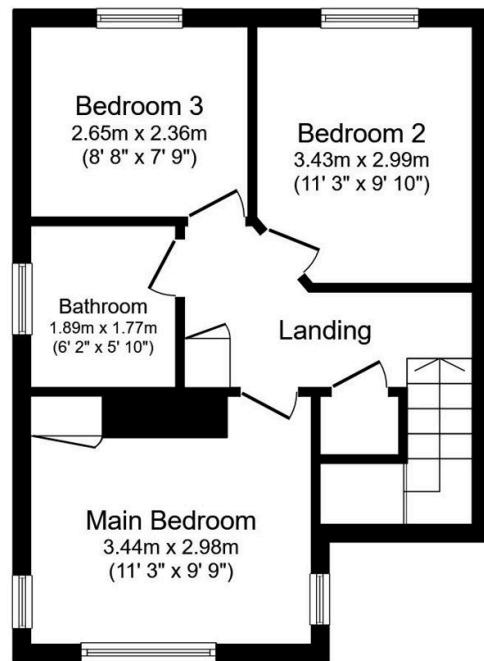
Presenting this semi-detached property requiring some modernisation within. With two reception rooms, three bedrooms, and bathroom, this home is ideally suited to a variety of buyers seeking to create their perfect abode. The large rear garden is in need of some cultivation, which will providing a tranquil outdoor space to enjoy those warm summer evenings. Situated in a sought-after location, this property benefits from excellent transport links ensuring convenient access to nearby amenities and the A55 expressway having local shops and schools within close proximity. Don't miss out on this fantastic chance to put your stamp on this property.

Key Features

- Semi-detached property
- Three bedrooms
- Nearby public transport links
- Requires modernisation
- Two reception rooms
- Large rear garden in need of cultivation
- Local amenities and schools close by
- Freehold / EPC - D
- Council tax - C
- Date - 02/02/2024



Ground Floor



First Floor

Total floor area 75.9 sq.m. (817 sq.ft.) approx

This plan is for illustration purposes only and may not be representative of the property. Plan not to scale. Powered by PropertyBox