

14 Osborne Grove, Rhyl, LL18 1NP

Offers In Region Of £100,000

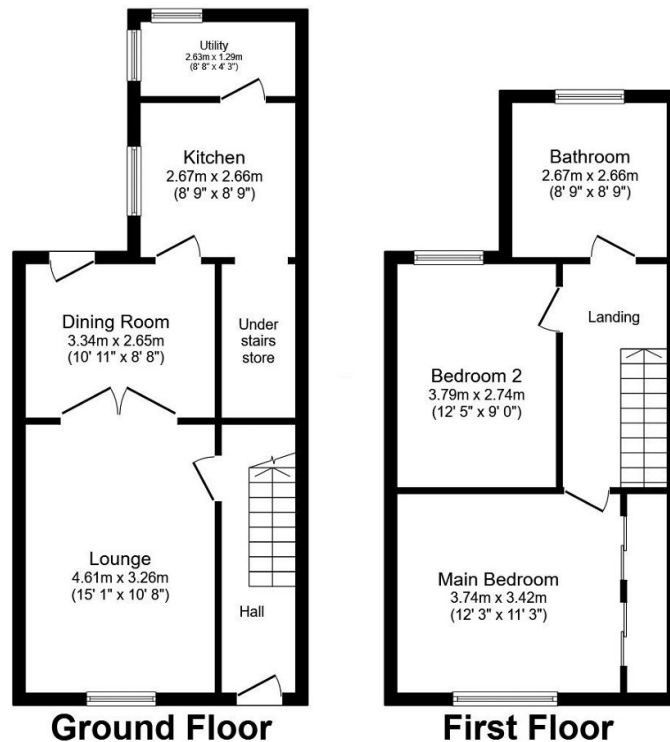
🛏 2 🚿 1 🚗 2



Introducing this terraced property in coastal location, offering an opportunity for those looking to undertake a refurbished project. Boasting two reception rooms, kitchen, two bedrooms and bathroom. Benefits from its proximity to a popular retail park, making everyday life convenient. Being within walking distance of the promenade with walking and cycling routes, providing ample opportunities for those who enjoy an active lifestyle.

Key Features

- A two bedroom mid terrace property
- Close to the Promenade
- In need of refurbishment
- Two reception rooms
- Enclosed hardstanding to the rear
- Gas fired central heating
- UPVC double glazing
- Freehold
- EPC - D
- 01/02/2024



Total floor area 86.7 sq.m. (934 sq.ft.) approx

This plan is for illustration purposes only and may not be representative of the property. Plan not to scale. Powered by PropertyBox