

Parc Tudur, Kinmel Bay

Offers In Region Of £385,000

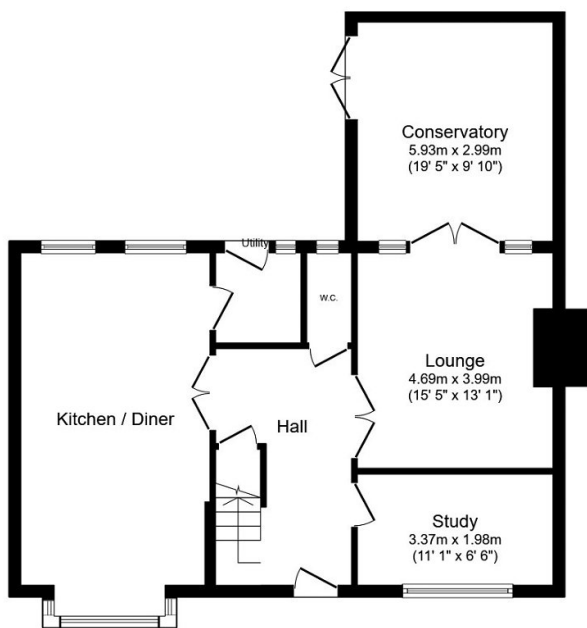
🛏️ 3 🚿 2 🚗 2



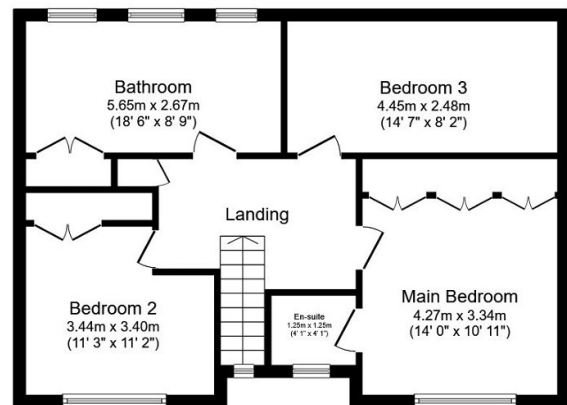
We are pleased to present this immaculate detached property, located in the town of Kinmel bay. Inside, you will find an open-plan kitchen with modern appliances, utility room, and dining space. The property boasts a total of three double bedrooms, each offering comfortable living spaces, master with an en-suite facility and a large four piece executive family bathroom with freestanding bath, perfect for a relaxing soak. This property is situated in an area with excellent local amenities, making it a convenient choice for everyday living. With its unique features including a feature fireplace, double garage, parking, and beautiful gardens, this property offers everything you need for a comfortable and enjoyable lifestyle. Don't miss the opportunity to make this stunning property your family's new home. Contact us today to arrange a viewing.

Key Features

- Immaculate detached property
- Seaside town location
- Lovely mature landscaped gardens
- Three double bedrooms
- Open-plan kitchen / Diner
- Double garage
- Off street parking
- EPC - C
- Council tax - F / Freehold
- Date 03/10/2023



Ground Floor



First Floor

Total floor area 133.0 sq.m. (1,432 sq.ft.) approx

This plan is for illustration purposes only and may not be representative of the property. Plan not to scale. Powered by PropertyBox