

9 Llys Catrin, Rhyl, LL18 4AJ

£240,000

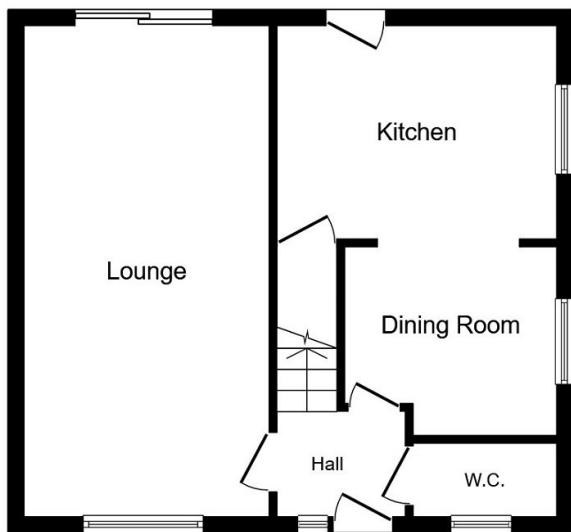
🛏 4 🚿 1 🚗 1



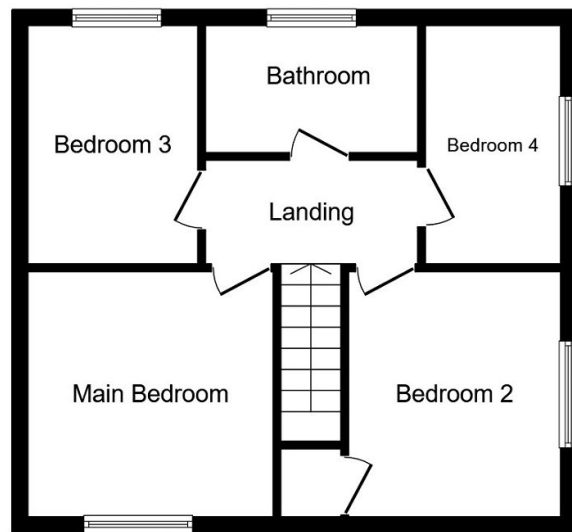
This four bedroom detached house resides on a good size corner plot in south Rhyl being within one mile of Rhyl's main town centre, situated on a bus route and having a nice leisurely walk to the seafront and promenade with all its recreational facilities. Schools at all levels are easily accessible within the area making this an ideal family home. Having off road parking, large gardens and linked garage.

Directions: Proceed away from the Rhyl office along Russell Road, at the main traffic lights turn right onto Tynwydd Road, over the railway bridge, turn left onto Ffordd Anwyl follow the road round, taking the seventh turning into Llys Catrin and the house is on the corner to the right by way of a for sale board.

- Large family home
- Garage
- Four bedrooms
- EPC- C
- Freehold
- Off street parking
- Large rear garden
- kitchen/diner
- Council tax- E
- Instructed 08/08/2023 / P/R 04/05/2024



Ground Floor



First Floor

Total floor area 92.5 sq.m. (995 sq.ft.) approx

This plan is for illustration purposes only and may not be representative of the property. Plan not to scale.