

HUNTERS[®]

HERE TO GET *you* THERE



5, Wharf Close

Manchester, M1 2WE

Asking Price £250,000



Council Tax: C



6 5, Wharf Close

Manchester, M1 2WE

Asking Price £250,000



Material Information - Manchester

Tenure Type; Leasehold

Leasehold Years remaining on lease; 125 from 2000

Leasehold Annual Service Charge Amount
£1,275.00 (THIS INCLUDES PARKING)

Leasehold Annual Ground Rent Amount £150

Council Tax Banding; C (Manchester)



Road Map



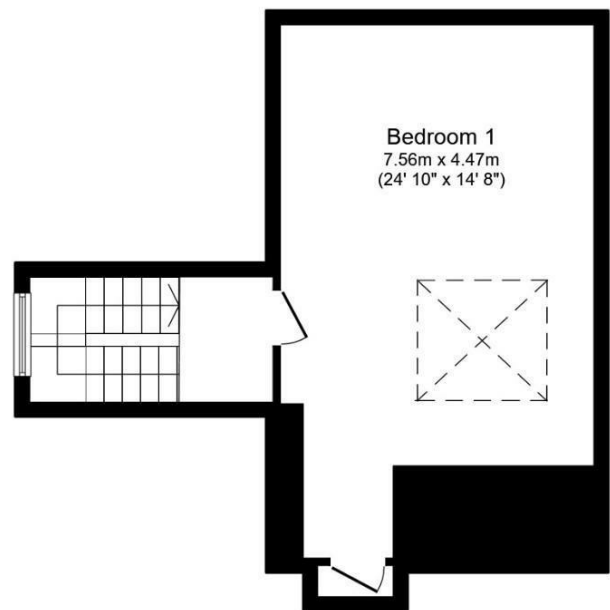
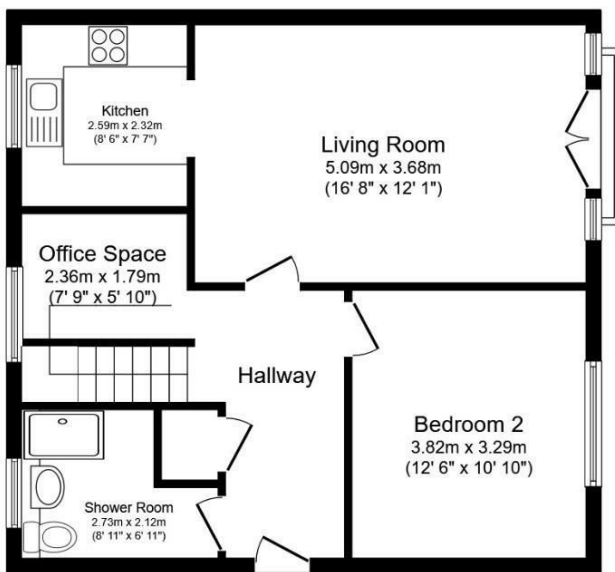
Hybrid Map



Terrain Map



Floor Plan



Ground Floor

First Floor

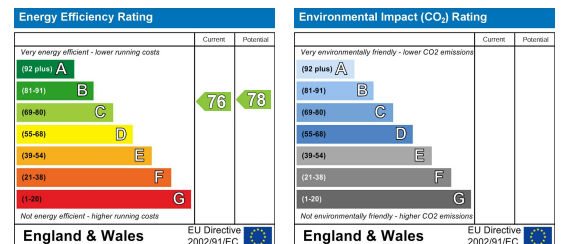
Total floor area 101.6 m² (1,093 sq.ft.) approx

This floor plan is for illustrative purposes only. It is not drawn to scale. Any measurements, floor areas (including any total floor area), openings and orientation are approximate. No details are guaranteed, they cannot be relied upon for any purpose and they do not form part of any agreement. No liability is taken for any error, omission or misstatement. A party must rely upon its own inspection(s). Powered by www.focalagent.com

Viewing

Please contact our Hunters Manchester Office on 0161 830 5800 if you wish to arrange a viewing appointment for this property or require further information.

Energy Efficiency Graph



These particulars are intended to give a fair and reliable description of the property but no responsibility for any inaccuracy or error can be accepted and do not constitute an offer or contract. We have not tested any services or appliances (including central heating if fitted) referred to in these particulars and the purchasers are advised to satisfy themselves as to the working order and condition. If a property is unoccupied at any time there may be reconnection charges for any switched off/disconnected or drained services or appliances - All measurements are approximate. **THINKING OF SELLING?** If you are thinking of selling your home or just curious to discover the value of your property, Hunters would be pleased to provide free, no obligation sales and marketing advice. Even if your home is outside the area covered by our local offices we can arrange a Market Appraisal through our national network of Hunters estate agents.