



++ Three Bedrooms All With Wardrobes + Two Bathrooms + West Facing Garden + Large Kitchen/Diner + Garage + Two Parking Spaces ++

Ullswater Close is located just a short walk from Great Ashby Woodland & Park with children's play area, parking and open green recreational space. The local neighbourhood shopping area and Round Diamond school are also in walking distance. This three bedroom house is offered with no onward chain - ready to occupy in early August.

EPC C - Council Tax Band D - Mains Gas Electric and Drainage. SG1 6AF has an average download speed of 136.9 Megabits per second (Mbps). Source Streetlist.co.uk

£360,000

29 Ullswater Close, Stevenage, SG1 6AF

ch@ndlers
independent property specialists

Signature

29 Ullswater Close

, Stevenage, SG1 6AF



- Garage + 2 Parking Spaces
- West Facing Garden
- Wardrobes to All Bedrooms
- Refitted En-Suite Shower Room
- Refitted Bathroom
- Kitchen/Diner
- Gas Heating & Double Glazing
- On Onward Chain

Entrance Hall

Lounge

13'8" x 10'5" (4.18 x 3.18)

Kitchen/Diner

13'6" x 11'8" (4.14 x 3.56)

First Floor - Landing

Bedroom One

12'1" x 8'5" (3.69 x 2.59)

En-Suite Shower Room

Bedroom Two

10'7" max x 7'10" (3.23 max x 2.40)

Bedroom Three

10'2" max x 5'6" (3.11 max x 1.70)

Bathroom

Garden

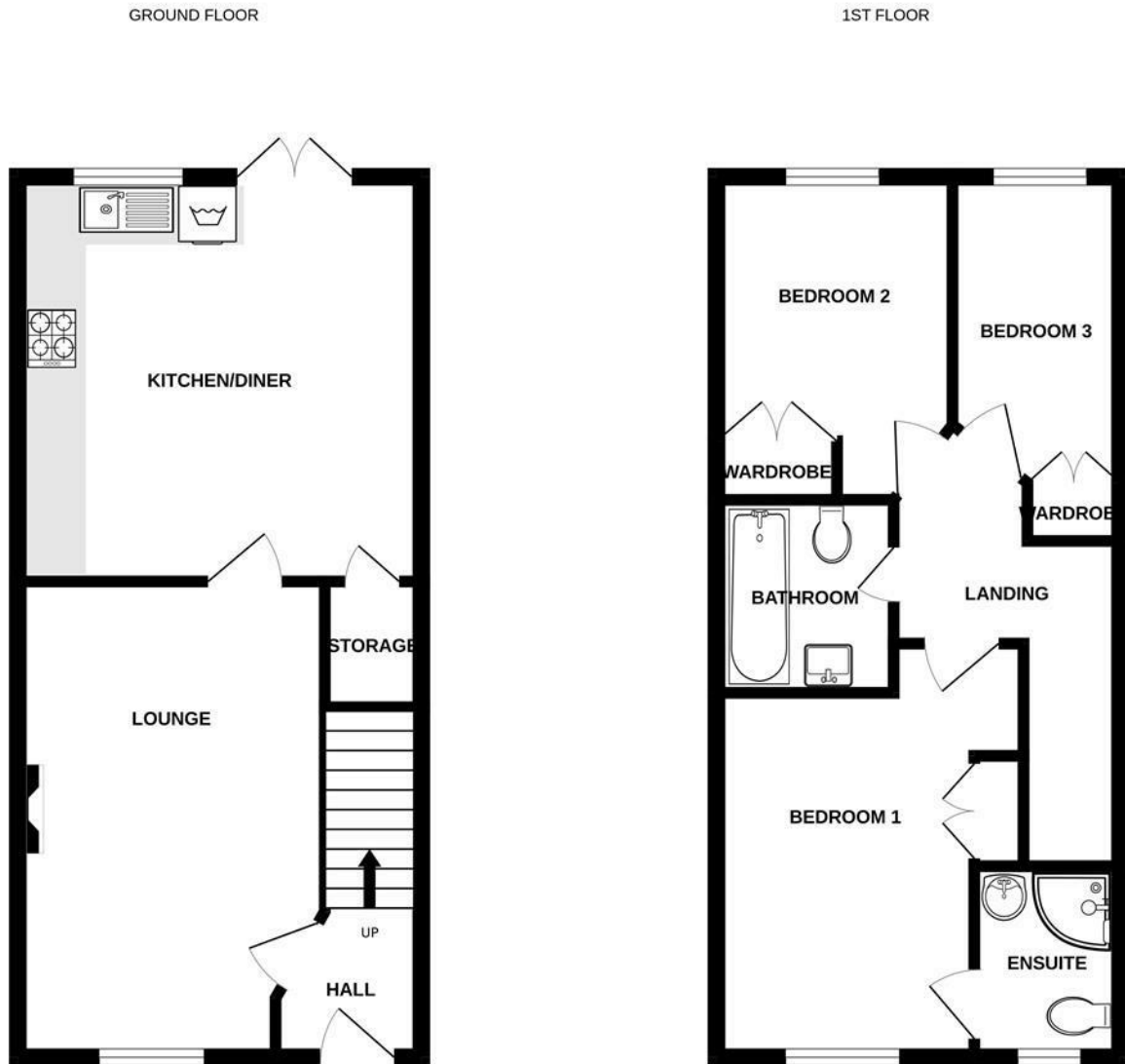
Garage & Parking

Directions

what3words ///blazed.tunes.health

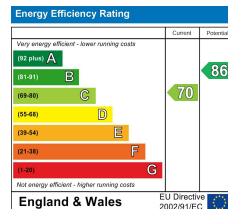


Floor Plan



Whilst every attempt has been made to ensure the accuracy of the floorplan contained here, measurements of doors, windows, rooms and any other items are approximate and no responsibility is taken for any error, omission or mis-statement. This plan is for illustrative purposes only and should be used as such by any prospective purchaser. The services, systems and appliances shown have not been tested and no guarantee as to their operability or efficiency can be given.
Made with Metropix ©2024

These particulars, whilst believed to be accurate are set out as a general outline only for guidance and do not constitute any part of an offer or contract. Intending purchasers should not rely on them as statements of representation of fact, but must satisfy themselves by inspection or otherwise as to their accuracy. No person in this firm's employment has the authority to make or give any representation or warranty in respect of the property.



01438 356635 www.chandlers-estates.co.uk 18 Market Place, Stevenage, Hertfordshire, SG1 1DB Email: sales@chandlers-estates.co.uk

Looking for that extra-special home?