



£465,000

4 2 2 G



Plot 19 Oakwell Place, Thorn Road Bidwell, Houghton Regis, LU5

ch@ndlers

independent property specialists

Signature

Plot 19 Oakwell Place

Thorn Road Bidwell, Houghton Regis, LU5 6JW

£465,000



Entrance Hall

Cloakroom/Utility

With Washing Machine

Study Area

Lounge

15'3" x 11'4" (4.64 x 3.45)

Kitchen/Dining

21'1" x 11'7" (6.42 x 3.54)

A choice of stylish kitchen subject to the stage of build with integrated Fridge/Freezer, dish washer, double oven, gas hob and extractor.

First Floor

Bedroom 1

11'8" x 10'10" (3.55 x 3.29)

En-suite

Bedroom 2

11'10" x 9'10" (3.61 x 3.00)

Bedroom 3

10'11" x 9'2" (3.32 x 2.80)

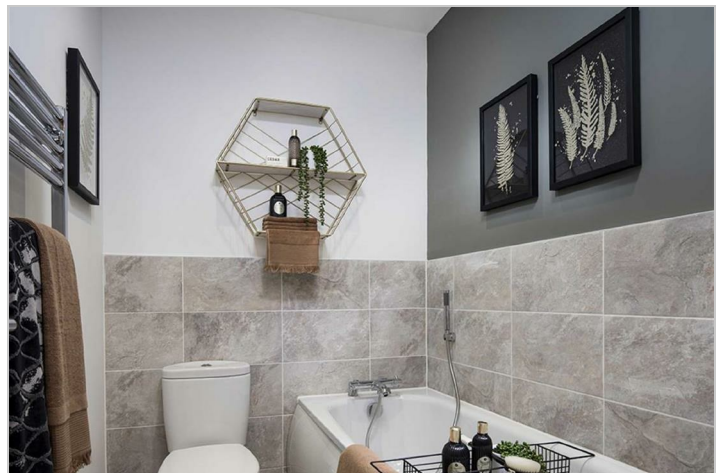
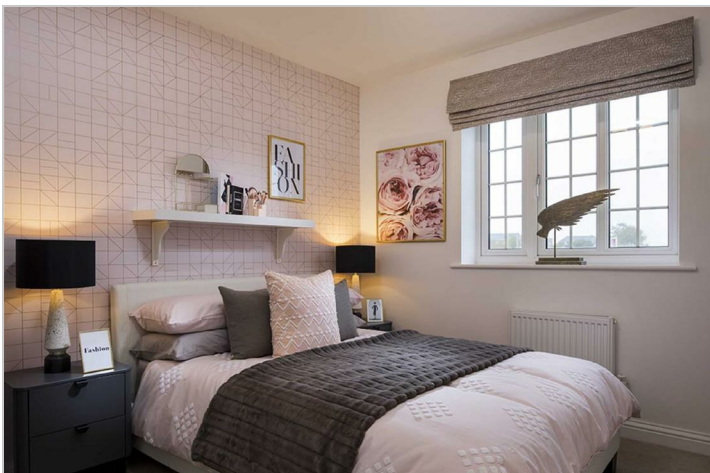
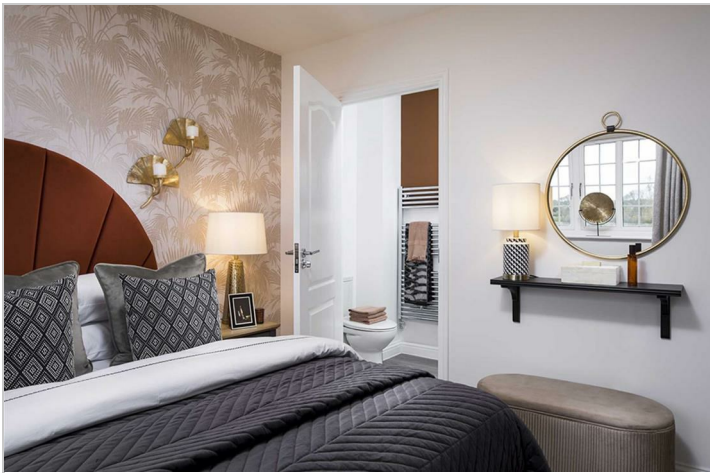
Bedroom 4

11'0" x 6'9" (3.35 x 2.06)

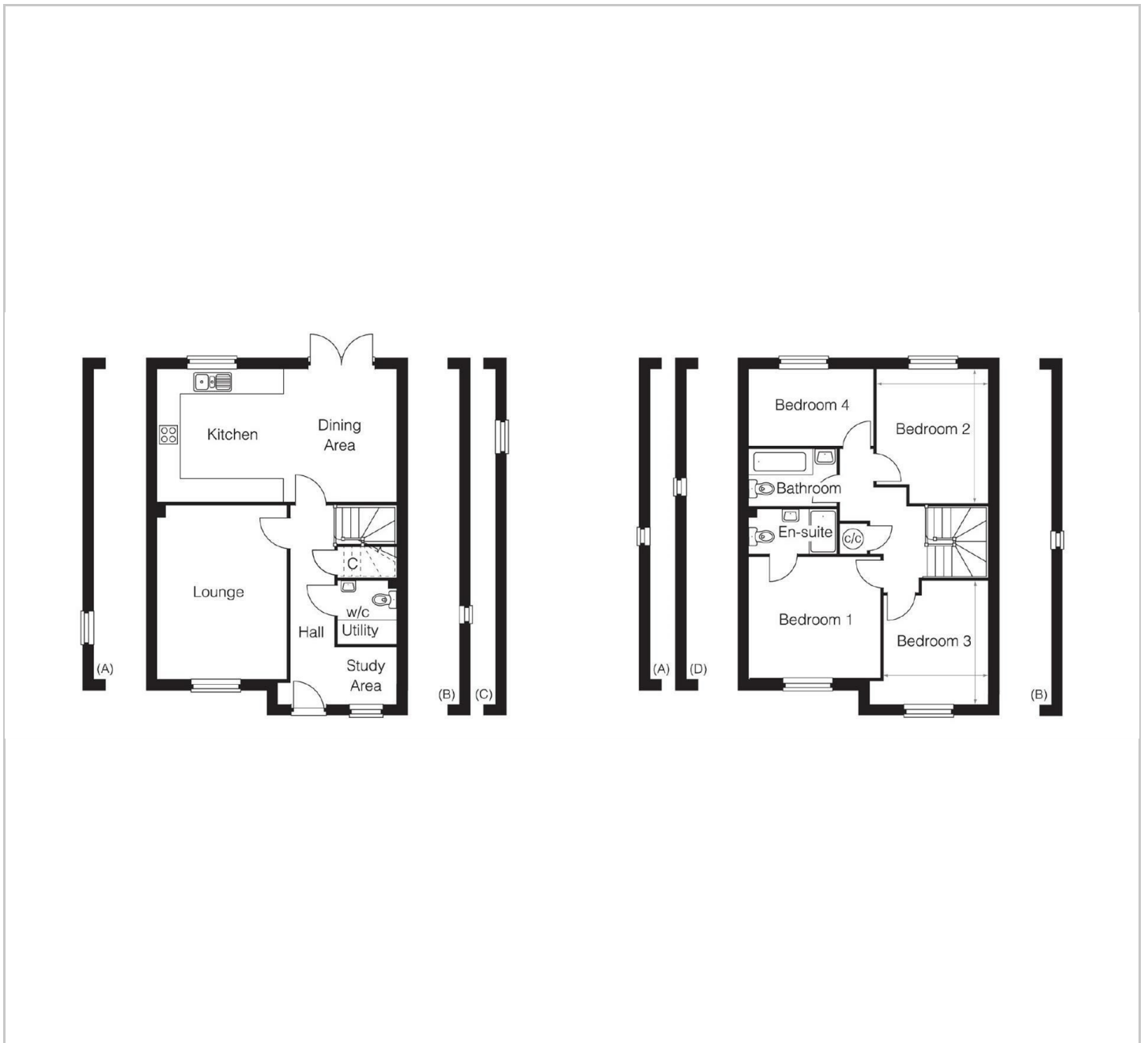
Family Bathroom

Cloakrooms. En-suites and bathrooms are fitted with Roca Gap sanitaryware, a choice of Porcelenosa tiling (subject to stage of build) - recessed chrome down lighters, shaver points to en-suite and bathrooms.

Garage



Floor Plan



Viewing

Please contact our Stevenage Sales Office on 01438 356635 if you wish to arrange a viewing appointment for this property or require further information.

These particulars, whilst believed to be accurate are set out as a general outline only for guidance and do not constitute any part of an offer or contract. Intending purchasers should not rely on them as statements of representation of fact, but must satisfy themselves by inspection or otherwise as to their accuracy. No person in this firm's employment has the authority to make or give any representation or warranty in respect of the property.

Energy Efficiency Graph

01438 356635 www.chandlers-estates.co.uk 18 Market Place, Stevenage, Hertfordshire, SG1 1DB Email: sales@chandlers-estates.co.uk

Looking for that extra-special home?