



A bright SPACIOUS family home, bedroom one has a DRESSING ROOM with luxury en-suite providing both a shower cubicle and bath complimented with down lighters in the standard specification. Bedroom two has an en-suite shower room. The ground floor provides lounge with large bay window and doors opening onto the garden, the family room also has doors opening onto the garden, creating a courtyard effect ideal for relaxing or entertaining. The double aspect kitchen is equipped with integrated appliances. Plot 22 has a South West Facing Garden, adjacent garage and driveway.

Our show homes are open daily between 10am and 5pm, please telephone 01582 Luton 447123 for additional information and to book an appointment to visit.

Measurements and information on specification supplied by the developer, some images are computer generated, some images/video are from different house types, specification and layout may vary, please clarify at our site sales office. Choices subject to stage of build.

£535,000

Plot 22 Oakwell Place, Thorn Road Bidwell, Houghton Regis, LU5 6JW

ch@ndlers
independent property specialists

Signature

Plot 22 Oakwell Place

Thorn Road Bidwell, Houghton Regis, LU5 6JW



- Four Bedroom Detached
- Bedroom 2 with En-Suite
- Choice of Kitchens & Tiling
- Master Bedroom with Dressing Room & En-Suite
- Large Lounge
- Garage and Drive
- Stylish Kitchen with integrated appliances
- Family Room

Entrance Hall

Cloakroom

Kitchen/Breakfast

18'2" x 12'11" (5.54 x 3.93)

Lounge

17'6" x 14'11" (5.34 x 4.55)

Family Room

16'2" x 10'7" (4.94 x 3.22)

First Floor

Bedroom 1

13'2" x 11'9" (4.01 x 3.57)

Dressing Area

8'4" x 6'1" (2.55 x 1.85)

En-suite

Bedroom 2

11'2" x 10'10" (3.41 x 3.30)

Bedroom 3

13'9" x 8'4" (4.18 x 2.55)

Bedroom 4

8'11" x 8'4" (2.72 x 2.53)

Family Bathroom

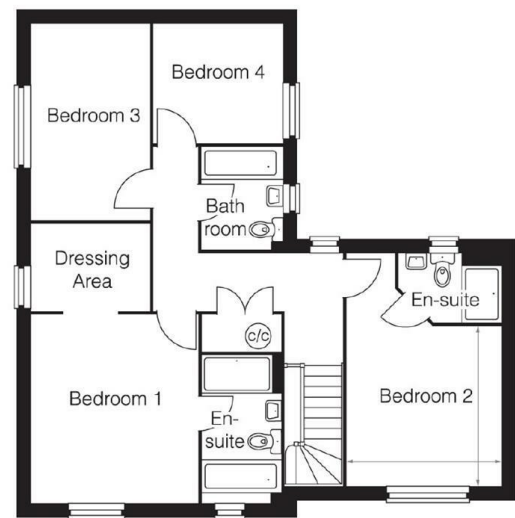
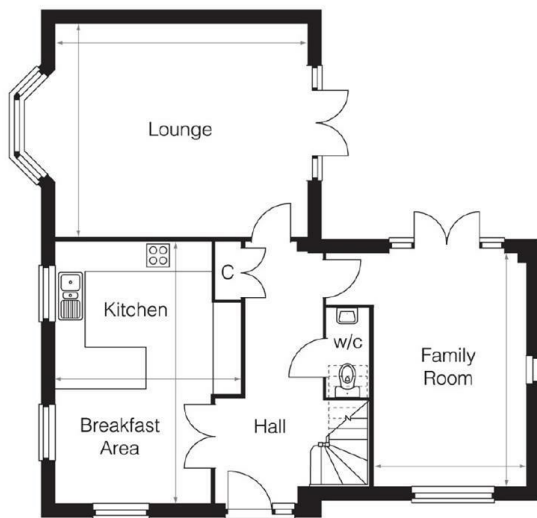
Garage

Garden

Directions



Floor Plan



These particulars, whilst believed to be accurate are set out as a general outline only for guidance and do not constitute any part of an offer or contract. Intending purchasers should not rely on them as statements of representation of fact, but must satisfy themselves by inspection or otherwise as to their accuracy. No person in this firm's employment has the authority to make or give any representation or warranty in respect of the property.

Looking for that extra-special home?