



SHEPHERD'S
REST

A RISBY HOMES DEVELOPMENT

The Romney



3 BEDROOMED SEMI-DETACHED

A contemporary three bedroom semi detached house with driveway. Having the benefit of underfloor heating to the ground floor, gas central heating to rest of house. With three good size bedrooms and a dining kitchen, utility room, downstairs WC and a high specification including, oak finish internal doors, choice of exclusive kitchen, bedroom and bathroom furniture, plus a range of integrated Neff appliances..

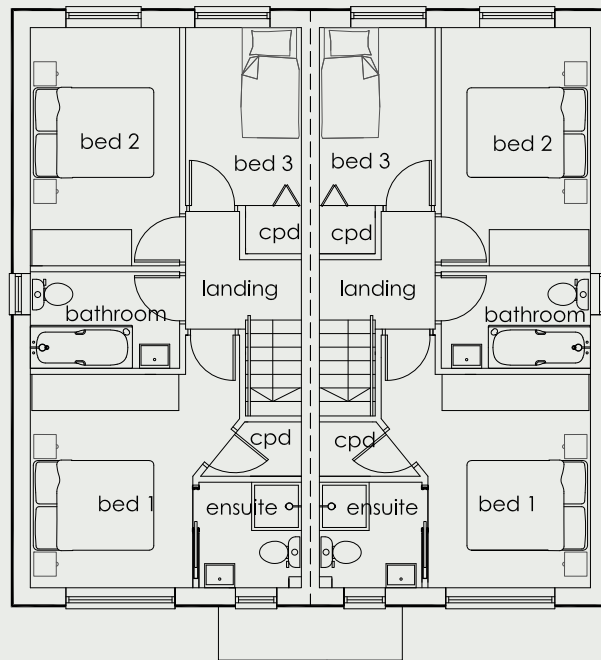


Trina Henderson
Sales Manager



trina@risbyhomes.co.uk
07376110229

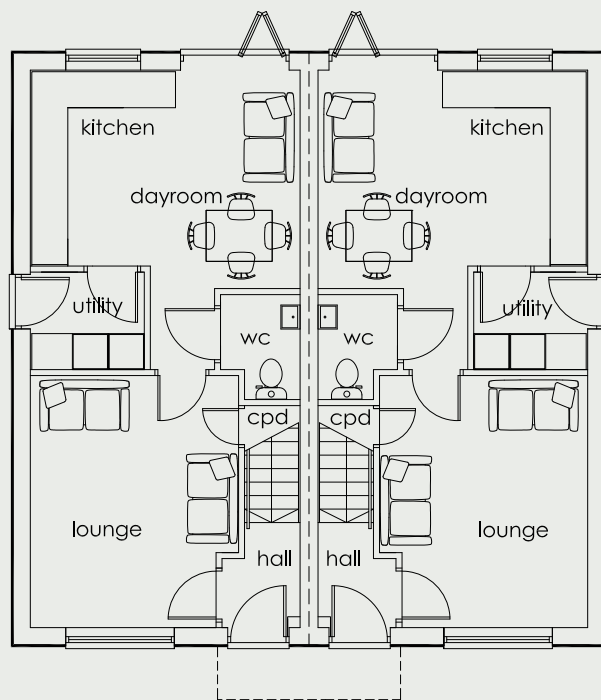
www.risbyhomes.co.uk



First Floor Plans

House Type C

Bedroom 1	3.54m x 2.70m	11ft 7" x 8ft 10"
Bedroom 2	3.95m x 2.48m	12ft 11" x 8ft 2"
Bedroom 3	2.95m x 1.92m	9ft 8" x 6ft 3"
Ensuite	1.75m x 1.70m	5ft 9" x 5ft 7"
Bathroom	1.60m x 2.48m	5ft 3" x 8ft 2"



Ground Floor Plans

House Type C

Living Room	4.20m x 3.47m	13ft 9" x 11ft 5"
Kitchen/Dayroom	3.64m x 4.50m	11ft 11" x 14ft 9"
Utility	1.63m x 1.90m	5ft 4" x 6ft 3"
WC	1.75m x 1.33m	5ft 9" x 4ft 4"

floor area - 900 sq.ft

IMPORTANT NOTICE: [Computer generated] Images are for illustrative purposes only. Individual features such as windows, brick and other materials' colours may vary, as may heating and electrical layouts. Floor plans are intended to give a general indication of the proposed floor layout only. The dimensions are for guidance only. Dimensions should not be used for carpet sizes, appliance spaces or items of furniture. Please ask our sales advisor for details of the treatments specified for individual plots. [Computer generated] Images and dimensions are not intended to form part of any contract warranty. Furniture and landscaping is shown for illustrative purposes only.