



44 Bermuda Place, Sovereign Harbour, Eastbourne, BN23 5TE

Located in this EXCLUSIVE position, directly on the edge of the OUTER HARBOUR with STUNNING COASTAL & HARBOUR VIEWS. This IMMACULATELY PRESENTED, RECONFIGURED TOWN HOUSE extends to approximately 2,100 sq ft in size and offers EXCELLENT VERSATILITY across four floors with FOUR DOUBLE BEDROOMS with FOUR EN-SUITES, a STUNNING OPEN PLAN KITCHEN/DINER & LIVING ROOM with a separate UTILITY ROOM, BATHROOM and GARAGE. CHAIN FREE with VIRTUAL TOUR.

The property forms part of the exclusive South Harbour development and is enviably located with direct access to the beach as well as other harbour amenities which include a variety of restaurants, boutiques and a large retail park. Eastbourne town centre is approximately 4 mile distant and provides extensive shopping facilities at the Beacon centre as well as mainline rail services to London Victoria and to Gatwick. Sporting facilities in the area include 3 principal golf courses, tennis at David Lloyd Centre and one of the largest sailing marinas on the south coast.

Offers In Excess Of £550,000

16 Cornfield Road, Eastbourne, East Sussex, BN21 4QE
Tel: 01323 737373 | sales@huntframe.co.uk

www.huntframe.co.uk

44 Bermuda Place

Sovereign Harbour, Eastbourne, BN23 5TE



- VIRTUAL TOUR
- STUNNING HARBOUR & COASTAL VIEWS
- STUNNING KITCHEN/DINER/SITTING ROOM
- FOUR DOUBLE BEDROOMS
- FOUR EN-SUITES
- BATHROOM
- UTILITY ROOM
- ELEVATED FRONT TERRACE
- GARAGE & PARKING
- CHAIN FREE

ENTRANCE HALL

UTILITY ROOM

16'0 x 7'6 (4.88m x 2.29m)

BATHROOM

9'5 x 6'9 (2.87m x 2.06m)

FIRST FLOOR LANDING

KITCHEN/DINER

20'0 x 15'11 (6.10m x 4.85m)

SITTING ROOM

16'2 x 10'8 (4.93m x 3.25m)

SECOND FLOOR LANDING

BEDROOM 1

15'10 x 10'8 (4.83m x 3.25m)

EN-SUITE

BEDROOM 4

10'2 x 8'10 (3.10m x 2.69m)

EN-SUITE

THIRD FLOOR LANDING

BEDROOM 2

13'11 x 10'2 (4.24m x 3.10m)

EN-SUITE

BEDROOM 3

13'3 x 10'11 (4.04m x 3.33m)

EN-SUITE

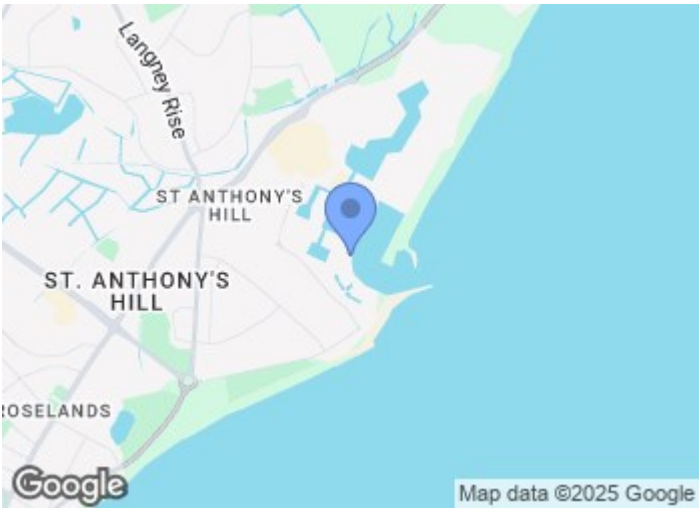
REAR GARDEN

ELEVATED FRONT TERRACE

OFF ROAD PARKING

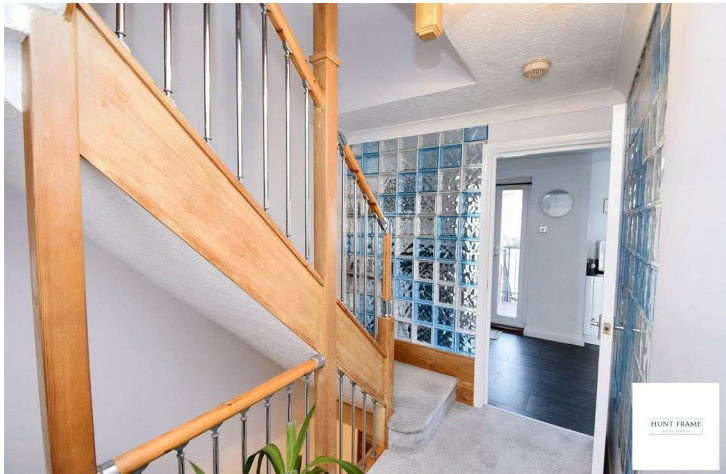
GARAGE

15'10 x 9'7 (4.83m x 2.92m)

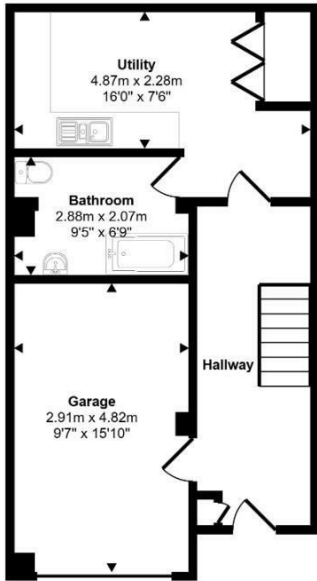


Directions

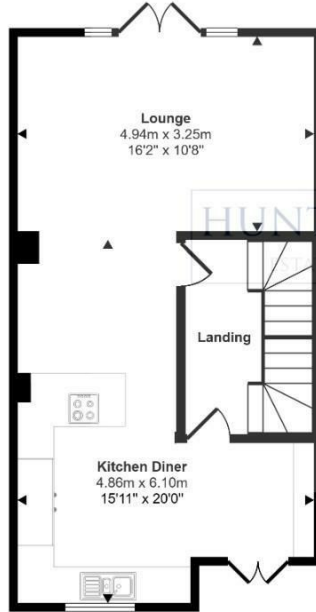
Tel: 01323 737373



Approx Gross Internal Area
183 sq m / 1966 sq ft



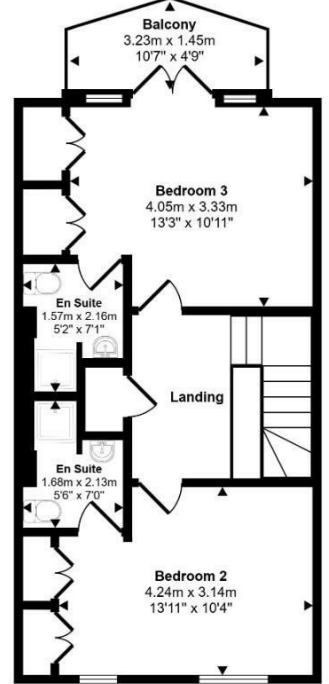
Ground Floor
Approx 45 sq m / 485 sq ft



First Floor
Approx 45 sq m / 484 sq ft

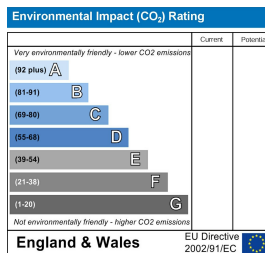
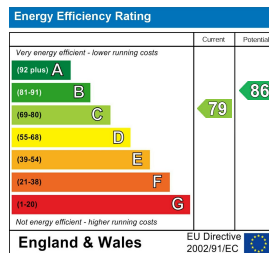


Second Floor
Approx 46 sq m / 495 sq ft



Third Floor
Approx 47 sq m / 501 sq ft

This floorplan is only for illustrative purposes and is not to scale. Measurements of rooms, doors, windows, and any items are approximate and no responsibility is taken for any error, omission or mis-statement. Icons of items such as bathroom suites are representations only and may not look like the real items. Made with Made Snappy 360.



These particulars, whilst believed to be accurate are set out as a general outline only for guidance and do not constitute any part of an offer or contract. Intending purchasers should not rely on them as statements of representation of fact, but must satisfy themselves by inspection or otherwise as to their accuracy. No person in this firm's employment has the authority to make or give any representation or warranty in respect of the property.