

HUNT FRAME

ESTATE AGENTS



1 Callao Quay

Sovereign Harbour North, Eastbourne, BN23 5AA

£1,650 Per Month



4



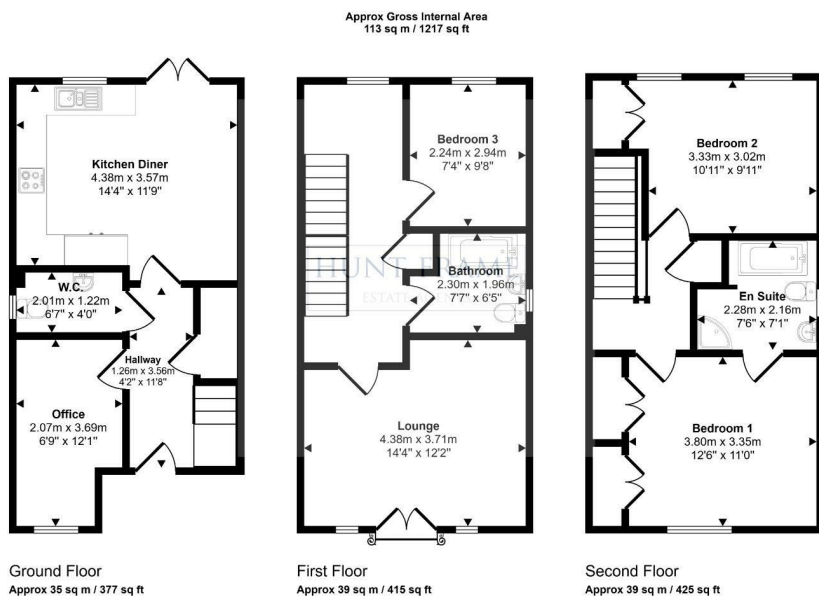
2



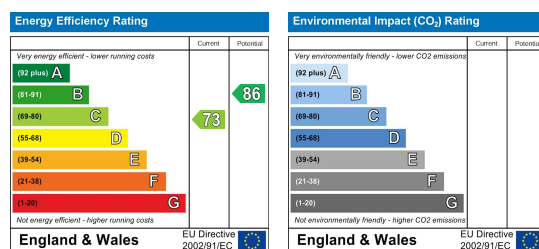
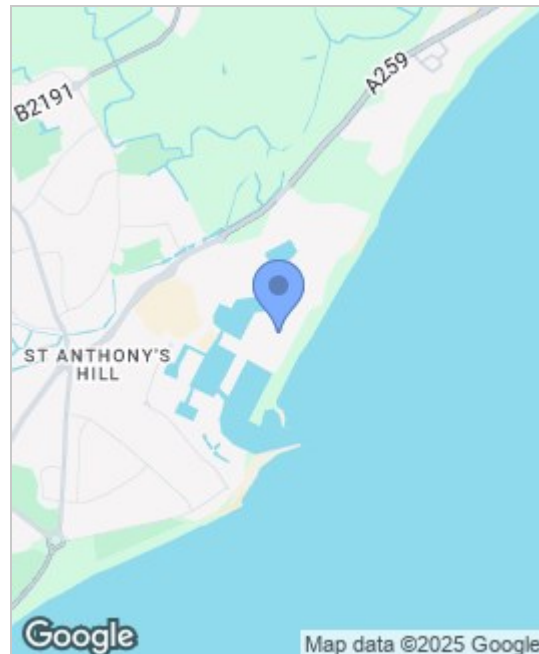
2



C



This floorplan is only for illustrative purposes and is not to scale. Measurements of rooms, doors, windows, and any items are approximate and no responsibility is taken for any error, omission or mis-statement. Icons of items such as bathroom suites are representations only and may not look like the real items. Made with Made Snappy 360.



Viewing

Please contact us on 01323 737373 if you wish to arrange a viewing appointment for this property or require further information.

- APPLY VIA EMAIL ONLY
- **DEPOSIT ALTERNATIVE OPTION AVAILABLE**
- THREE/FOUR BEDROOM
- KITCHEN/BREAKFAST ROOM
- FIRST FLOOR SITTING ROOM
- MASTER BEDROOM & EN-SUITE
- LANDSCAPED GARDEN
- GARAGE WITH EV POINT
- OFF ROAD PARKING SPACE
- EASY REACH OF BEACH

IF INTERESTED IN THIS PROPERTY, PLEASE CLICK ON 'EMAIL AGENT' OR 'REQUEST DETAILS' TO FILL OUT AN EMAIL CONTACT FORM TO BE GIVEN AN APPLICATION FORM TO COMPLETE. WE ARE UNABLE TO COMPLETE THESE OVER THE PHONE.

An EXTREMELY WELL PRESENTED THREE/FOUR BEDROOM TOWNHOUSE located on the POPULAR NORTH HARBOUR within easy reach of the beach, waterfront shops, restaurants, bars and Crumbles Retail Park.

Council Tax Band E
Holding Deposit £380.76
Security Deposit £1,903.84

The versatile accommodation includes a useful ground floor OFFICE/BED 4 as well as a KITCHEN/DINING ROOM with integrated appliances, the MASTER BEDROOM has an EN-SUITE and externally there is a LANDSCAPED GARDEN, GARAGE with EV POINT & an ADDITIONAL PARKING SPACE.

PLEASE APPLY VIA EMAIL ONLY FOR AN APPLICATION FORM.



These particulars, whilst believed to be accurate are set out as a general outline only for guidance and do not constitute any part of an offer or contract. Intending purchasers should not rely on them as statements of representation of fact, but must satisfy themselves by inspection or otherwise as to their accuracy. No person in this firm's employment has the authority to make or give any representation or warranty in respect of the property.

16 Cornfield Road, Eastbourne, East Sussex, BN21 4QE
Tel: 01323 737373 | lettings@huntframe.co.uk

www.huntframe.co.uk