

# HUNT FRAME

ESTATE AGENTS

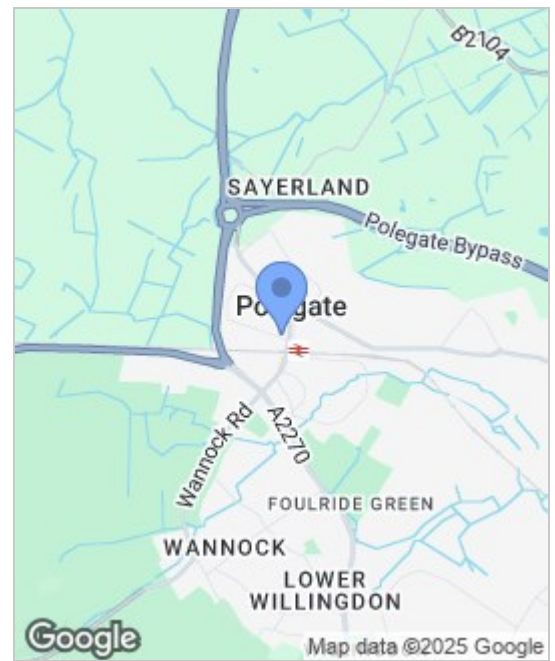


**5A Cross Street**

Polegate, Polegate, BN26 6BN

**£995 PCM**





Energy Efficiency Rating			Environmental Impact (CO <sub>2</sub> ) Rating		
	Current	Potential		Current	Potential
Very energy efficient - lower running costs					
(92 plus) A			Very environmentally friendly - lower CO <sub>2</sub> emissions		
(81-91) B			(92 plus) A		
(69-80) C			(81-91) B		
(55-68) D			(69-80) C		
(39-54) E			(55-68) D		
(21-38) F			(39-54) E		
(1-20) G			(21-38) F		
Not energy efficient - higher running costs			(1-20) G		
Not environmentally friendly - higher CO <sub>2</sub> emissions			Not environmentally friendly - higher CO <sub>2</sub> emissions		
England & Wales			England & Wales		
EU Directive 2002/91/EC			EU Directive 2002/91/EC		

## Viewing

Please contact us on 01323 737373 if you wish to arrange a viewing appointment for this property or require further information.

- TWO BEDROOM HOUSE
- LOUNGE
- MODERN BATHROOM
- COURTYARD GARDEN
- CLOSE TO HIGH STREET
- KITCHEN
- GAS CENTRAL HEATING
- PLEASE APPLY BY EMAIL ONLY

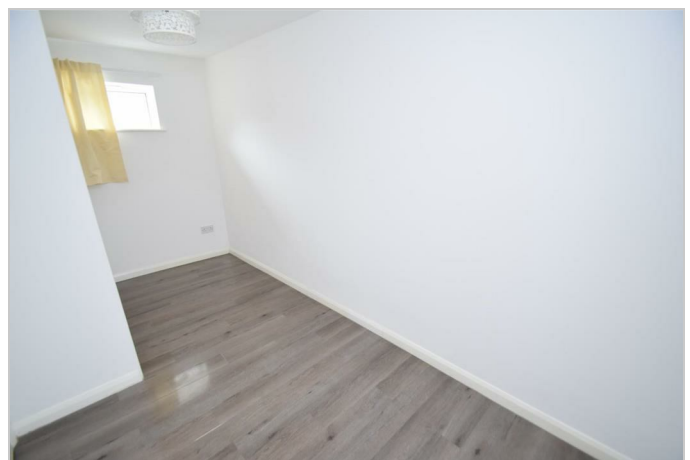
HUNT FRAME are pleased to bring to the rental market this TWO BEDROOM semi-detached house situated close to Polegate High Street and mainline railway station. Comprising lounge, modern kitchen and bathroom, gas central heating and front courtyard garden.

AVAILABLE LATE APRIL.

1 WEEKS HOLDING DEPOSIT £229.61

5 WEEK SECURITY DEPOSIT £1148.07

WEALDEN DISTRICT COUNCIL TAX BAND B



These particulars, whilst believed to be accurate are set out as a general outline only for guidance and do not constitute any part of an offer or contract. Intending purchasers should not rely on them as statements of representation of fact, but must satisfy themselves by inspection or otherwise as to their accuracy. No person in this firm's employment has the authority to make or give any representation or warranty in respect of the property.

16 Cornfield Road, Eastbourne, East Sussex, BN21 4QE

Tel: 01323 737373 | [lettings@huntframe.co.uk](mailto:lettings@huntframe.co.uk)

[www.huntframe.co.uk](http://www.huntframe.co.uk)