

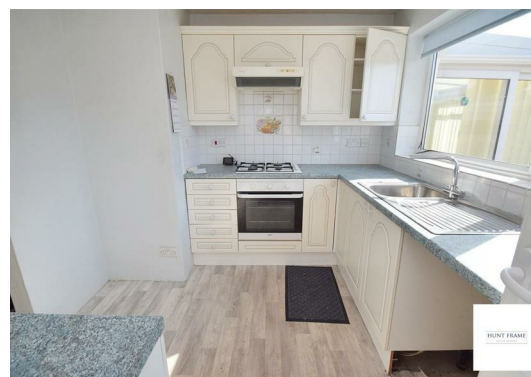


18 Golding Road, Eastbourne, BN23 7AW

£300,000



VIRTUAL TOUR - Located on the popular Springfield Farm estate at Langney, within easy reach of The Crumbles retail park, a **TWO BEDROOM SEMI-DETACHED BUNGALOW**, offered for sale with no chain. Although now requiring some updating, viewing is highly recommended.



Double glazed front door to:

Entrance Porch

Further door to:

Entrance Hall

Radiator, door to airing cupboard, access to loft space.

Lounge

17'1 x 10'6 (5.21m x 3.20m)
Fireplace with electric fire, radiator, double glazed door to:

Conservatory

9'11 x 7'6 (3.02m x 2.29m)
Of double glazed construction with double glazed door to rear garden.

Kitchen

Fitted in a range of wall and base mounted cupboards and drawers. Work tops with inset sink and single drainer unit. Built in oven and hob with extractor hood above. Space and plumbing for washing machine, larder cupboard, double glazed window to rear, double glazed door to side.

Bedroom One

13'5 x 10'4 (4.09m x 3.15m)
Fitted wardrobes and drawers, radiator, double glazed window to front

Bedroom Two

9'5 x 8'8 (2.87m x 2.64m)
Radiator, double glazed window to front.

Bathroom

In a coloured suite comprising panelled bath with electric shower above, low level wc, pedestal wash basin, radiator, double glazed windows to side.

Outside

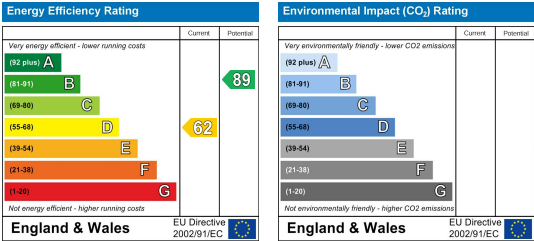
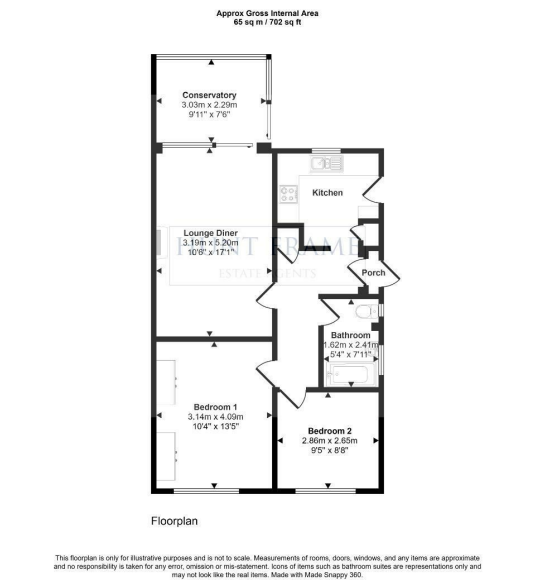
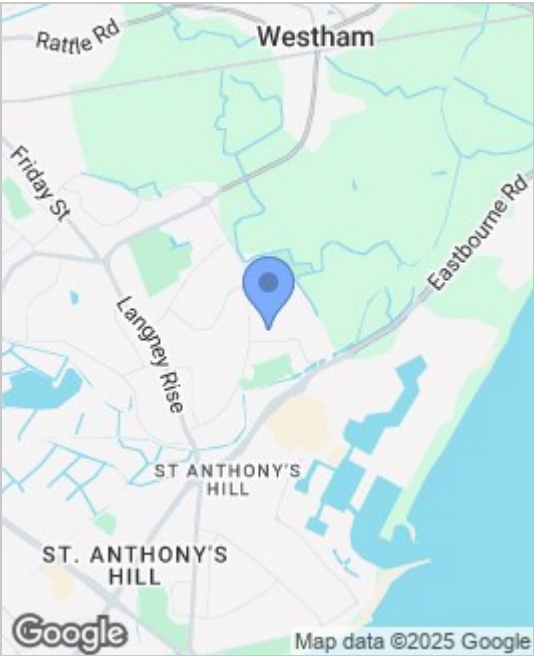
Front garden - laid as paving

Driveway providing parking for a number of vehicles, leading to:

GARAGE - with up and over door.

Rear garden - laid as paving with inset flower beds.

Council tax band C



These particulars, whilst believed to be accurate are set out as a general outline only for guidance and do not constitute any part of an offer or contract. Intending purchasers should not rely on them as statements of representation of fact, but must satisfy themselves by inspection or otherwise as to their accuracy. No person in this firms employment has the authority to make or give any representation or warranty in respect of the property.