

HUNT FRAME

ESTATE AGENTS



11 Southdown House, 1 Howard Square, Eastbourne, BN21 4FG

£560,000



VIRTUAL TOUR- A sumptuous ground floor MAISONETTE with SUPERBLY appointed accommodation which extends to approximately 1479 sq ft in size. SITTING ROOM with SEA VIEWS, BESPOKE KITCHEN, THREE DOUBLE BEDROOMS all with EN-SUITES and a SEPARATE WC. ALLOCATED PARKING.

An exclusive development of 15 LUXURIOUSLY APPOINTED apartments, finished to an exacting standard within this Grade II listed building. Located just off The Promenade, to the west of the town centre, within easy reach of the theatres, Towner Art Gallery, seafront and Pier.

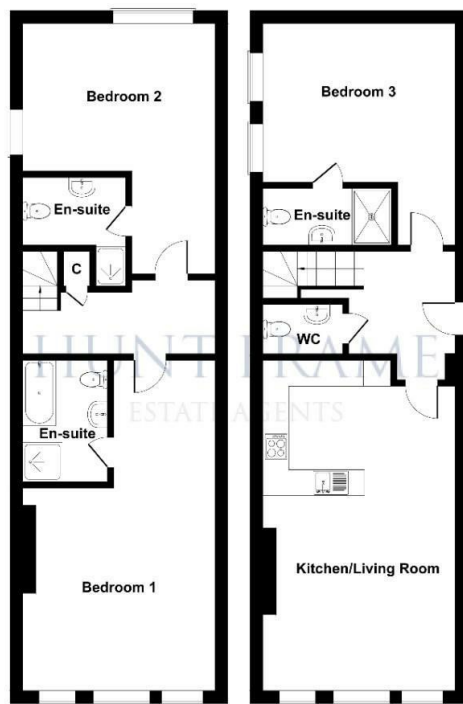
The vast majority of apartments and maisonettes have two double bedrooms, both with en-suites, and a separate cloakroom, fully fitted kitchen/dining rooms with integrated appliances, quartz work surfaces and travertine flooring. All maisonettes have allocated parking. With generous room sizes and reception rooms overlooking Howard Square and the seafront to the side, reservations are now being taken. SHARE OF FREEHOLD, 999 year lease. Call HUNT FRAME, sole agents, to arrange your appointment to view.

- SEAFRONT LOCATION
- THREE EN-SUITE DOUBLE BEDROOMS
- BESPOKE FULLY FITTED KITCHEN WITH INTEGRATED APPLIANCES
- ALLOCATED OFF ROAD PARKING SPACE
- GRADE II LISTED
- GAS CENTRAL HEATING
- SEA VIEWS
- INTEGRATED APPLIANCES
- LUXURY DEVELOPMENT
- SPLIT LEVEL MAISONETTE

Viewing

Please contact our Hunt Frame Sales Office on 01323 737373 if you wish to arrange a viewing appointment for this property or require further information.

11 Southdown House



LOWER GROUND FLOOR GROUND FLOOR

Not to Scale. Produced by The Plan Portal on behalf of Hunt Frame.
For Illustrative.



These particulars, whilst believed to be accurate are set out as a general outline only for guidance and do not constitute any part of an offer or contract. Intending purchasers should not rely on them as statements of representation of fact, but must satisfy themselves by inspection or otherwise as to their accuracy. No person in this firm's employment has the authority to make or give any representation or warranty in respect of the property.