

# HUNT FRAME

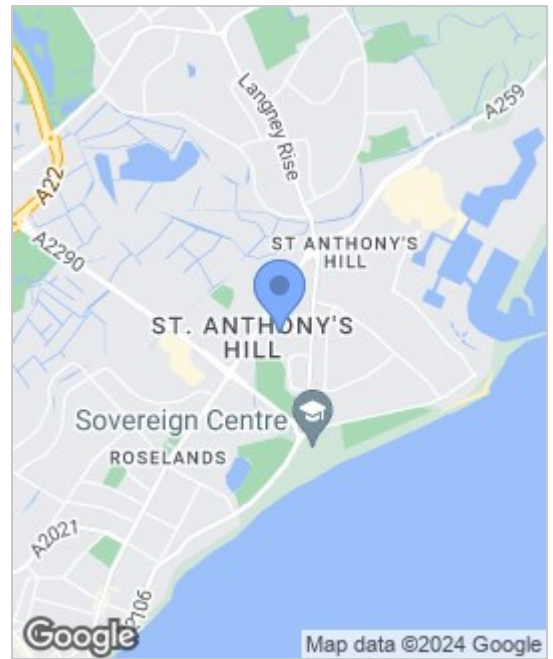
ESTATE AGENTS



**25 Queens Road**  
Eastbourne, BN23 6JT

**£1,300 PCM**





Energy Efficiency Rating		Environmental Impact (CO <sub>2</sub> ) Rating			
	Current	Potential		Current	Potential
Very energy efficient - lower running costs			Very environmentally friendly - lower CO <sub>2</sub> emissions		
(92 plus) A			(92 plus) A		
(81-91) B			(81-91) B		
(69-80) C			(69-80) C		
(55-68) D			(55-68) D		
(39-54) E			(39-54) E		
(21-38) F			(21-38) F		
(1-20) G			(1-20) G		
Not energy efficient - higher running costs			Not environmentally friendly - higher CO <sub>2</sub> emissions		
England & Wales		EU Directive 2002/91/EC	England & Wales		EU Directive 2002/91/EC

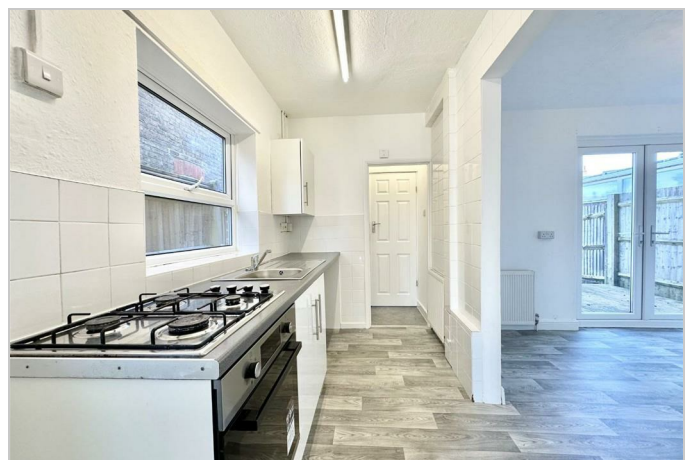
## Viewing

Please contact us on 01323 737373 if you wish to arrange a viewing appointment for this property or require further information.

- PLEASE CLICK EITHER 'CONTACT AGENT' OR 'FURTHER DETAILS' TO APPLY
- WELL PRESENTED
- LARGE GARDENS
- ST ANTHONYS LOCATION
- THREE BEDROOMS
- AVAILABLE IMMEDIATELY

PLEASE CLICK EITHER 'CONTACT AGENT' OR 'FURTHER DETAILS' TO APPLY. Located in the popular St Anthonys, a THREE BEDROOM house which is WELL PRESENTED throughout. AVAILABLE IMMEDIATELY, the property has just been FRESHLY DECORATED with NEW CARPETS fitted. Offering good sized living space and a LARGE GARDEN. PLEASE APPLY BY EMAIL ONLY.

SECURITY DEPOSIT £1500.00  
 HOLDING DEPOSIT: £300.00  
 COUNCIL TAX BAND C



These particulars, whilst believed to be accurate are set out as a general outline only for guidance and do not constitute any part of an offer or contract. Intending purchasers should not rely on them as statements of representation of fact, but must satisfy themselves by inspection or otherwise as to their accuracy. No person in this firms employment has the authority to make or give any representation or warranty in respect of the property.