

HUNT FRAME

ESTATE AGENTS



Southdown House 2 Howard Square, Eastbourne, BN21 4FG

Price Guide £520,000

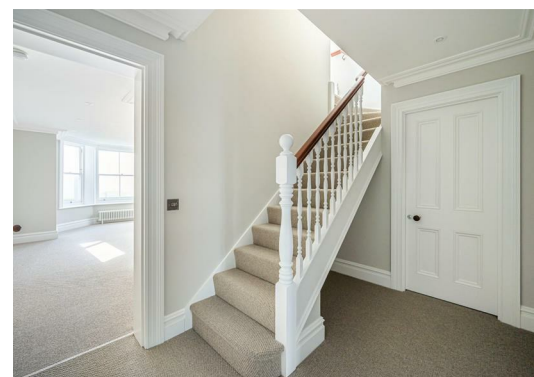
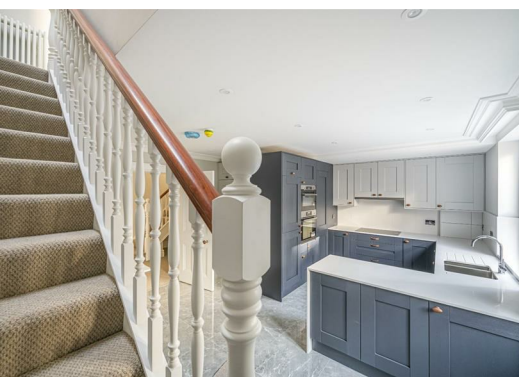


A sumptuous ground floor MAISONETTE with SUPERBLY appointed accommodation which extends to approximately 1161 sq ft in size. A UNIQUE LAYOUT with a BAY FRONTED SITTING ROOM with SEA VIEWS, BESPOKE KITCHEN, TWO DOUBLE BEDROOMS both with EN-SUITES and a SEPARATE WC. ALLOCATED PARKING.

An exclusive development of 15 LUXURIOUSLY APPOINTED apartments, finished to an exacting standard within this Grade II listed building. Located just off The Promenade, to the west of the town centre, within easy reach of the theatres, Towner Art Gallery, seafront and Pier.

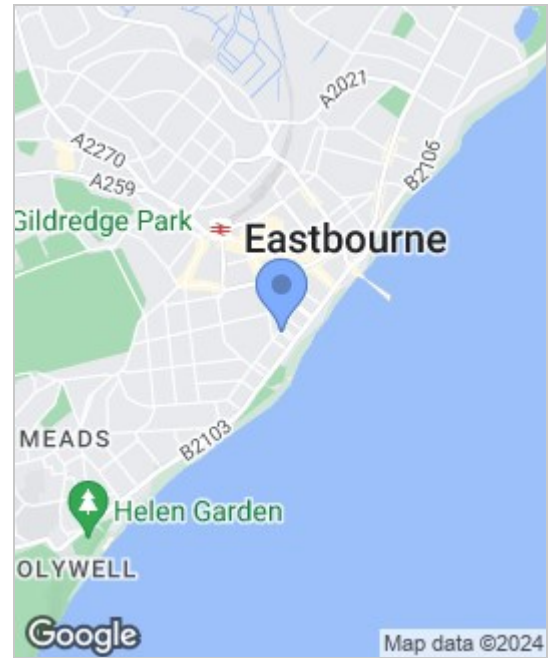
The vast majority of the apartments and maisonettes have two double bedrooms with en-suites and a separate cloakroom, fully fitted kitchen/dining rooms with integrated appliances, quartz work surfaces and travertine flooring.

All maisonettes have allocated parking. With generous room sizes and reception rooms overlooking Howard Square and the seafront to the side, and ready for occupation during Winter 2023/4, reservations are now being taken. SHARE OF FREEHOLD, 999 year lease. Call HUNT FRAME, sole agents, to arrange your appointment to view.



OUTGOINGS

MAINTENANCE £1267.81 PER ANNUM
SHARE OF FREEHOLD 999 YEAR LEASE
FROM COMPLETION



These particulars, whilst believed to be accurate are set out as a general outline only for guidance and do not constitute any part of an offer or contract. Intending purchasers should not rely on them as statements of representation of fact, but must satisfy themselves by inspection or otherwise as to their accuracy. No person in this firm's employment has the authority to make or give any representation or warranty in respect of the property.