

# HUNT FRAME

ESTATE AGENTS



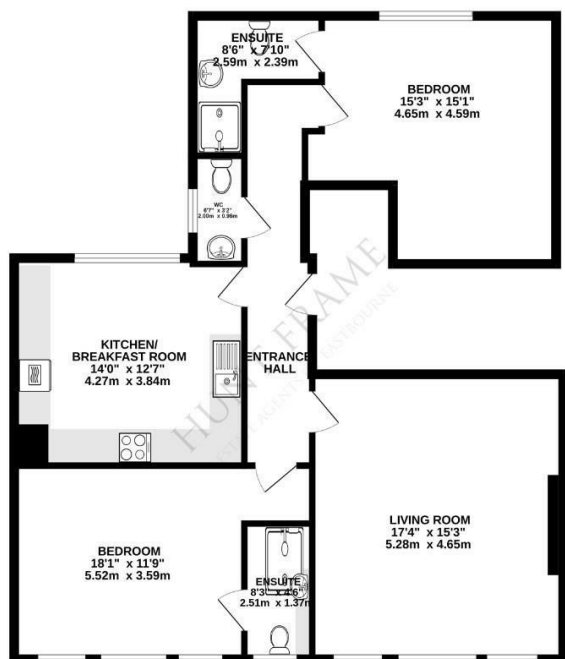
## 14 Southdown House 1 Howard Square

West Town Centre, Eastbourne, BN21 4FG

Price Guide £435,000



GROUND FLOOR  
1003 sq.ft. (93.1 sq.m.) approx.



TOTAL FLOOR AREA: 1003 sq.ft. (93.1 sq.m.) approx.  
While every effort has been made to ensure the accuracy of the floorplan, contained here, measurements of doors, windows, rooms and any other items are approximate and no responsibility is taken for any error, omission or misstatement. This plan is for illustrative purposes only and should be used as such for any prospective purchase. The services, systems and appliances shown have not been tested and no guarantee is given for their operability or efficiency. See us in person.



## Viewing

Please contact us on 01323 737373 if you wish to arrange a viewing appointment for this property or require further information.

- SECOND FLOOR APARTMENT
- SPACIOUS RECEPTION
- STUNNING KITCHEN/BREAKFAST ROOM
- SEPARATE WC
- SEAFRONT LOCATION
- SEA VIEWS
- TWO DOUBLE BEDROOMS WITH EN-SUITES
- INTEGRATED APPLIANCES
- SHARE OF FREEHOLD

A STUNNING SECOND FLOOR APARTMENT with SEA VIEWS from the SPACIOUS RECEPTION ROOM and MASTER BEDROOM. Both BEDROOMS have EN-SUITE facilities and as with the rest of the development the apartment enjoys a LOVELY FITTED KITCHEN/BREAKFAST ROOM and an extremely high level of detail. Approximately 1003 SQ FT in size.

An exclusive development of 15 LUXURIOUSLY APPOINTED apartments, finished to an exacting standard within this Grade II listed building. Located just off The Promenade, to the west of the town centre, within easy reach of the theatres, Towner Art Gallery, seafront and Pier.

The apartments and maisonettes have a minimum of two double bedrooms with en-suites, and a separate cloakroom, fully fitted kitchen/dining rooms with integrated appliances, quartz work surfaces and travertine flooring. All maisonettes have allocated parking. With generous room sizes and reception rooms overlooking Howard Square and the seafront to the side, and ready for occupation during Winter 2023/4, reservations are now being taken. SHARE OF FREEHOLD, 999 year lease. Call HUNT FRAME, sole agents, to arrange your appointment to view.



These particulars, whilst believed to be accurate are set out as a general outline only for guidance and do not constitute any part of an offer or contract. Intending purchasers should not rely on them as statements of representation of fact, but must satisfy themselves by inspection or otherwise as to their accuracy. No person in this firm's employment has the authority to make or give any representation or warranty in respect of the property.

16 Cornfield Road, Eastbourne, East Sussex, BN21 4QE  
Tel: 01323 737373 | sales@huntframe.co.uk

www.huntframe.co.uk