

# HUNT FRAME

ESTATE AGENTS



## Southdown House Howard Square, Eastbourne, BN21 4FG

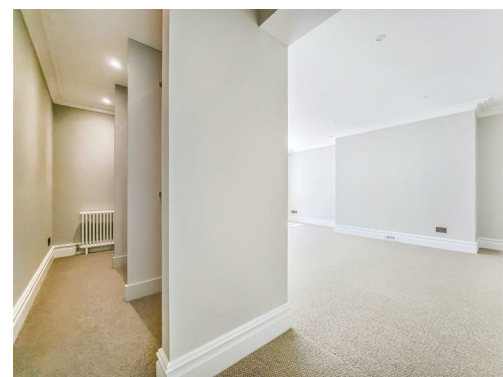
### Prices From £425,000



PRICES FROM £425,000. An exclusive development of 15 LUXURIOUSLY APPOINTED apartments, finished to an exacting standard within this Grade II listed building. Located just off The Promenade, to the west of the town centre, within easy reach of the theatres, Towner Art Gallery, seafront and Pier.

The apartments and maisonettes have a minimum of two double bedrooms with en-suites and a separate cloakroom, fully fitted kitchen/dining rooms with integrated appliances, quartz work surfaces and travertine flooring. All maisonettes have allocated parking.

With generous room sizes and reception rooms overlooking Howard Square and the seafront to the side, and ready for occupation during Winter 2023/4, reservations are now being taken. SHARE OF FREEHOLD, 999 year lease. Call HUNT FRAME, sole agents, to arrange your appointment to view.





**MAISONETTE 1 RESERVED**

**MAISONETTE 2 RESERVED**

**MAISONETTE 3 RESERVED**

**MAISONETTE 4 £490,000**

**APARTMENT 5 £435,000**

First floor.

**APARTMENT 6 RESERVED**

First floor.

**APARTMENT 7 £425,000**

Second floor.

**APARTMENT 8 £430,000**

Second floor.

**APARTMENT 9 £430,000**

Third floor.

**APARTMENT 10 £435,000**

Third floor.

**MAISONETTE 11 RESERVED**

**MAISONETTE 12 RESERVED**

**APARTMENT 13 RESERVED**

First floor.

**APARTMENT 14 £435,000**

Second floor.

**APARTMENT 15 £440,000**

Third floor.

**SHARE OF FREEHOLD WITH  
999 YEAR LEASES**

Grade II Listed, EPC exempt.

Council Tax Bands TBC.

Maintenance TBC.

Permission for pets may be sought from  
the Managing Agents.

Sub-Letting is not permitted.

**MAINTENANCE**

£1400 (approx) per annum.



These particulars, whilst believed to be accurate are set out as a general outline only for guidance and do not constitute any part of an offer or contract. Intending purchasers should not rely on them as statements of representation of fact, but must satisfy themselves by inspection or otherwise as to their accuracy. No person in this firm's employment has the authority to make or give any representation or warranty in respect of the property.

16 Cornfield Road, Eastbourne, East Sussex, BN21 4QE

Tel: 01323 737373 | Email: [info@huntframe.co.uk](mailto:info@huntframe.co.uk)

[www.huntframe.co.uk](http://www.huntframe.co.uk)