



33 Edgecote, Milton Keynes, MK8 9ER

£289,995

Situated in a quiet and sought-after cul-de-sac in the popular area of Great Holm, this well-presented two-bedroom semi-detached home is offered to the market with no onward chain.

The accommodation comprises an entrance porch leading into a spacious and bright living/dining room, providing an ideal space for both relaxing and entertaining. To the rear of the property is a fitted kitchen with views over the garden. Upstairs, the property offers two generously sized double bedrooms and a well-appointed first floor bathroom.

Externally, the home benefits from an enclosed rear garden, perfect for outdoor dining or enjoying the warmer months, along with a small front garden enhancing its kerb appeal. To the side of the property is ample driveway parking, offering convenience for multiple vehicles.

Ideally located, the property enjoys easy access to Central Milton Keynes, the mainline railway station, and a range of local amenities, making it well suited to first-time buyers, downsizers, or investors alike.

Energy rating: D
Council tax band: B

ENTRANCE PORCH

UPVC double glazed door to front. Door to living/dining room.

LIVING/DINING ROOM 14'0" x 11'11" (4.27 x 3.65)

Double glazed window to front. Radiator. Television and internet point. Stairs to first floor landing with understairs storage cupboard. Opening to kitchen.

KITCHEN 11'11" x 6'11" (3.64 x 2.12)

Double glazed window to rear. Double glazed door to rear. Fitted wall and base units with worksurfaces incorporating sink drainer unit. Electric oven, four ring gas hob. Space for fridge freezer. Plumbing for washing machine. Wall mounted central heating boiler. Radiator.

FIRST FLOOR LANDING

Stairs from living/dining room. Access to part boarded loft space via drop down ladder.

BEDROOM ONE 10'4" x 8'8" (3.16 x 2.65)

Double glazed window to front. Radiator.

BEDROOM TWO 11'11" x 6'11" (3.65 x 2.12)

Double glazed window to rear. Radiator. Airing cupboard.

BATHROOM

Double glazed obscure window to side. Three piece suite comprising bath with mixer tap and shower, close coupled wc and wash hand basin. Wall mounted cabinet. Electric shaver point.

FRONT GARDEN

Shingle stone garden with paved path. Double length driveway to side.

REAR GARDEN

Laid to lawn with patio area and flower beds. Gated access to side.

All measurements are approximate.

The area measurements are taken from the government EPC register.

The mention of appliances and/or services within these sales particulars does not imply that they are in full efficient working order. Please note that any services, heating systems or appliances have not been tested and no warranty can be given or implied as to their working order. MORTGAGE & FINANCIAL

- The Mortgage Store can provide you with up to the minute information on all available rates. To arrange an appointment, telephone this office **YOUR HOME IS AT RISK IF YOU DO NOT KEEP UP REPAYMENTS ON A MORTGAGE OR OTHER LOANS SECURED ON IT.** Full quotation available on request. A suitable life policy may be required. Loans subject to status. Minimum age 18.

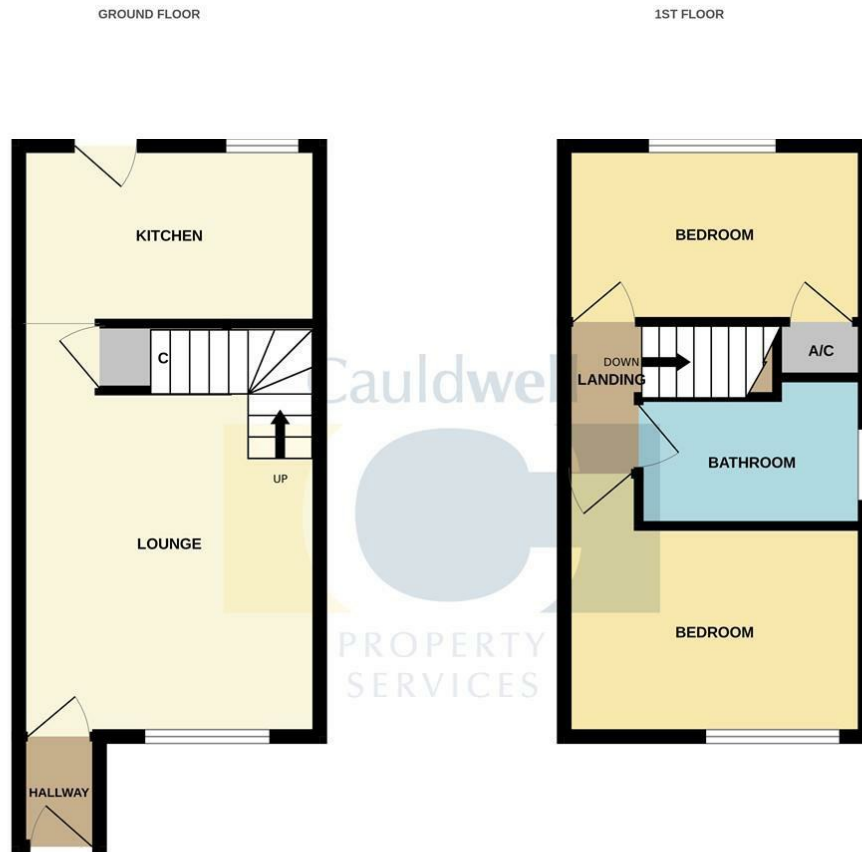
The above details have been submitted to our

clients but at the moment have not been approved by them and we therefore cannot guarantee their accuracy and they are distributed on this basis. Please ensure that you have a copy of our approved details before committing yourself to any expense.

We routinely refer customers to Franklins solicitors, Gough Thorne and The Mortgage Store. It is your decision whether you choose to deal with them, in making that decision, you should know that we receive a referral fee in the region of £80 to £250 for recommending you to them

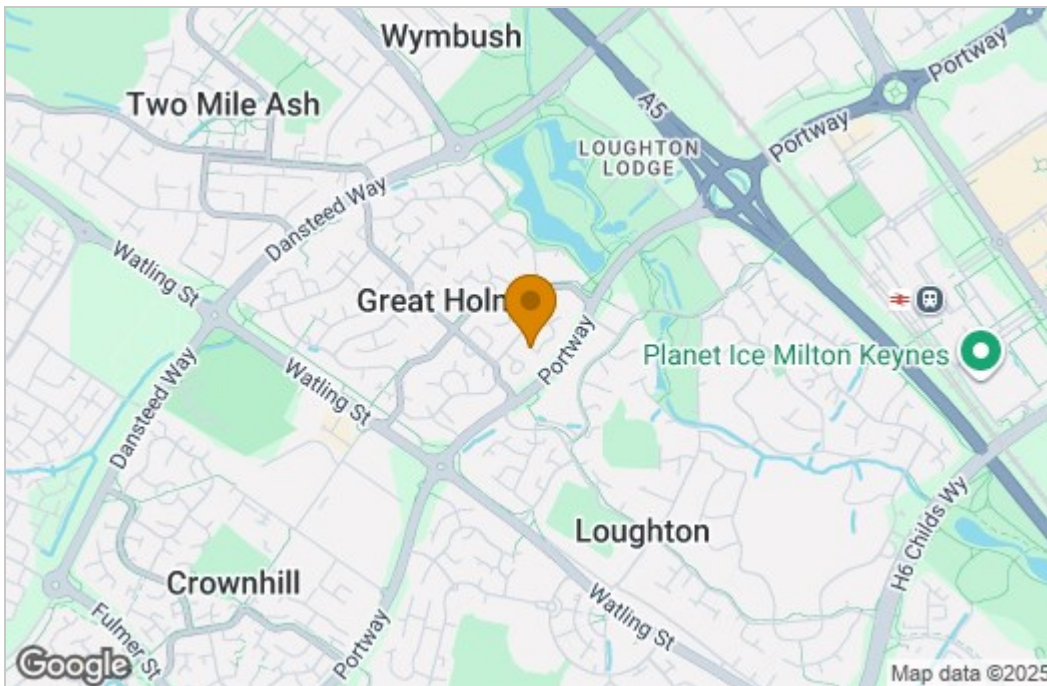
All clients are subject to identity and source of funds checks. We use a third party company to complete these for us. The charge is £60 inc vat per transaction which requires to be paid at your earliest convenience once your offer has been accepted, this enables us to conduct the verification checks we are obliged to do as per HMRC Anti Money Laundering guidelines.

Floor Plan

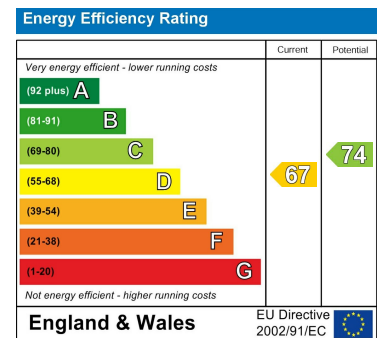


Whilst every attempt has been made to ensure the accuracy of the floorplan contained here, measurements of doors, windows, rooms and any other items are approximate and no responsibility is taken for any error, omission or mis-statement. This plan is for illustrative purposes only and should be used as such by any prospective purchaser. The services, systems and appliances shown have not been tested and no guarantee as to their operability or efficiency can be given. Made with Metropix ©2025

Area Map



Energy Efficiency Graph



These particulars, whilst believed to be accurate are set out as a general outline only for guidance and do not constitute any part of an offer or contract. Intending purchasers should not rely on them as statements of representation of fact, but must satisfy themselves by inspection or otherwise as to their accuracy. No person in this firm's employment has the authority to make or give any representation or warranty in respect of the property.