

Cauldwell

PROPERTY SERVICES



17 Great Denson

Eaglestone, Milton Keynes, MK6 5AU

£299,995



17 Great Denson

Eaglestone, Milton Keynes, MK6 5AU

£299,995



ENTRANCE

Entrance through front door into entrance hall. Stairs to first floor landing. Under stair storage cupboard. Radiator.

LIVING/DINING ROOM

21'5" x 10'4" (6.54 x 3.17)

Double glazed window to the front. Double glazed door to the rear. TV and telephone point, Radiator.

KITCHEN/DINER

10'6" x 10'5" (3.21 x 3.18)

Double glazed window and door to the rear. Kitchen fitted with a range of wall and base units with worksurfaces. Double stainless steel sink with mixer tap. Oven with extractor over. Space for fridge freezer. Plumbing for washing machine, space for tumble dryer. Tiled walls and floor. Radiator.

CLOAKROOM

uPVC window to the front. Two piece suite. Low level wc, wash hand basin with mixer tap and vanity unit. Heated towel rail. tiled walls and floor.

FIRST FLOOR LANDING

Stairs from entrance hall. Access to loft space,

BEDROOM ONE

10'9" x 10'8" (3.28 x 3.27)

Double glazed window to the rear. Radiator. Built in wardrobe.

BEDROOM TWO

11'1" x 10'4" (3.38 x 3.17)

Double glazed window to the rear. Radiator. Built in cupboard.

BEDROOM THREE

8'4" x 7'4" (2.55 x 2.24)

Double glazed window to the front. Radiator. Built in storage cupboard.

FAMILY BATHROOM

uPVC window to the front. Corner bath with mixer tap and mains shower. Hand wash basin with mixer tap set into vanity unit. Low level wc, heather towel rail. Tiled walls and floor. Extractor fan. Cupboard housing combination boiler.

FRONT

Small paved garden with timber shed storage.

REAR GARDEN

Enclosed rear garden laid mainly to patio. Gated access to rear. Small lawned area. Outside tap. Outside power point.

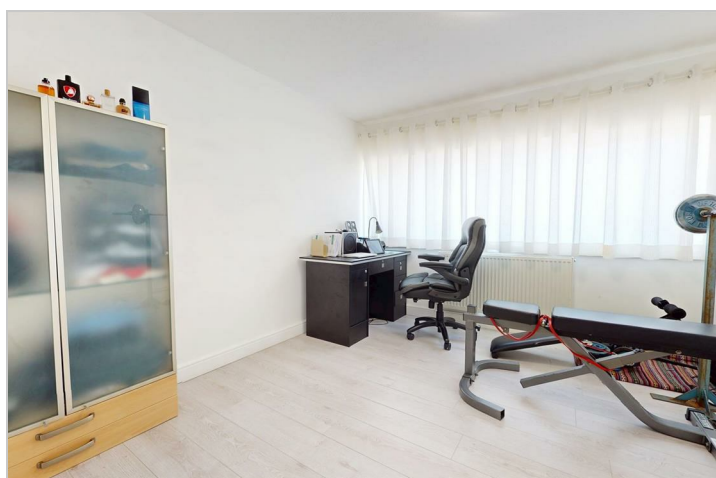
All measurements are approximate. The mention of appliances and/or services within these sales particulars does not imply that they are in full efficient working order. Please note that any services, heating systems or appliances have not been tested and no warranty can be given or implied as to their working order. **MORTGAGE & FINANCIAL** - The Mortgage Store can provide you with up to the minute information on all available rates. To arrange an appointment, telephone this office **YOUR HOME IS AT RISK IF YOU DO NOT KEEP UP REPAYMENTS ON A MORTGAGE OR OTHER LOANS SECURED ON IT.** Full quotation available on request. A suitable life policy may be required. Loans subject to status. Minimum age 18.

The above details have been submitted to our clients

but at the moment have not been approved by them and we therefore cannot guarantee their accuracy and they are distributed on this basis. Please ensure that you have a copy of our approved details before committing yourself to any expense.

MORTGAGE & FINANCIAL - The Mortgage Store can provide you with up to the minute information on all available rates. To arrange an appointment, telephone this office **YOUR HOME IS AT RISK IF YOU DO NOT KEEP UP REPAYMENTS ON A MORTGAGE OR OTHER LOANS SECURED ON IT.** Full quotation available on request. A suitable life policy may be required. Loans subject to status. Minimum age 18.

We routinely refer customers to Franklins solicitors, Gough Thorne and The Mortgage Store. It is your decision whether you choose to deal with them, in making that decision, you should know that we receive a referral fee in the region of £80 to £250 for recommending you to them



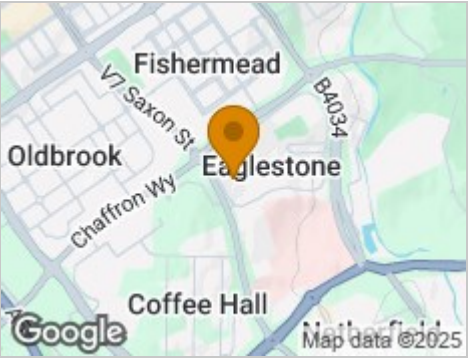
Road Map



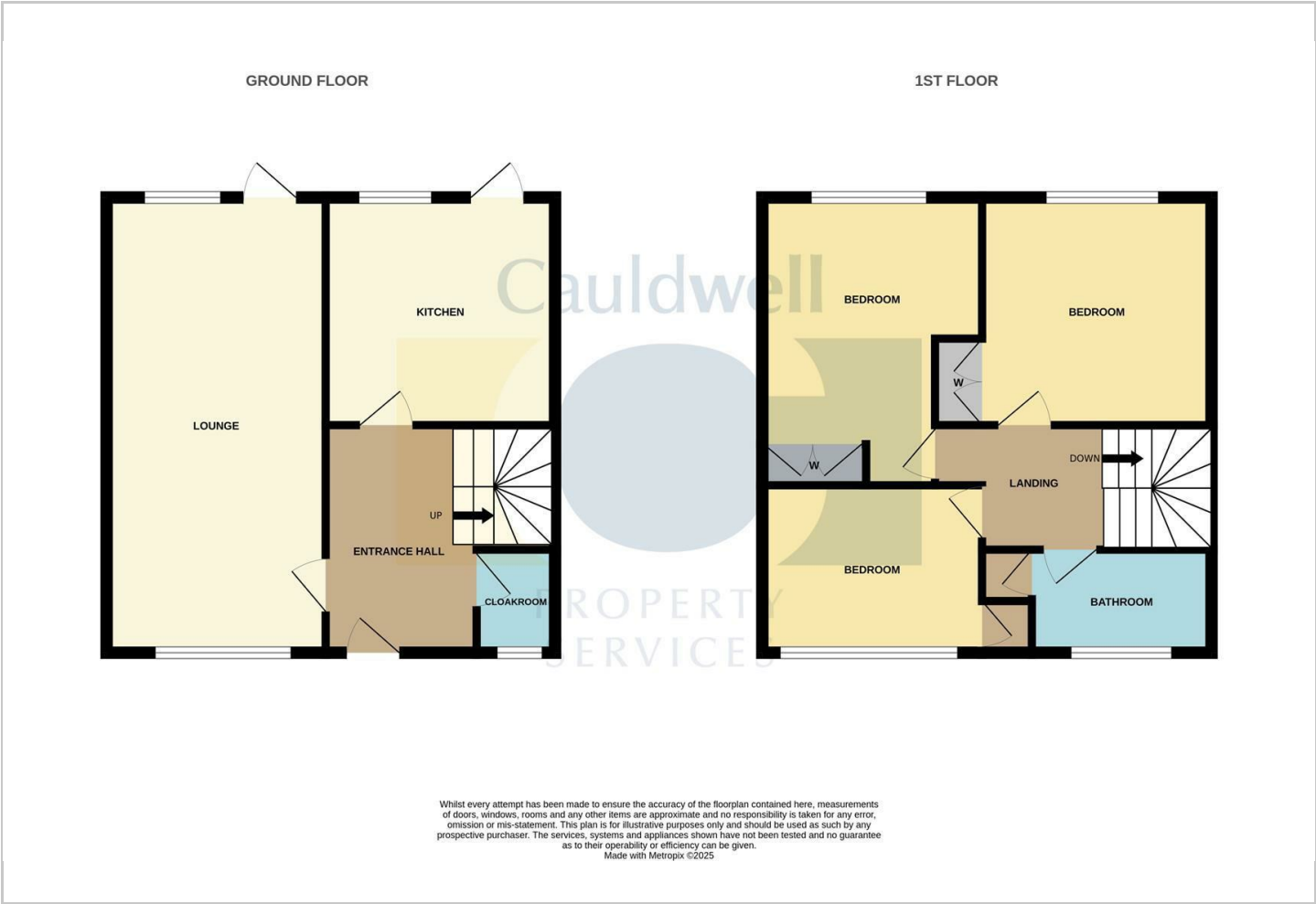
Hybrid Map



Terrain Map



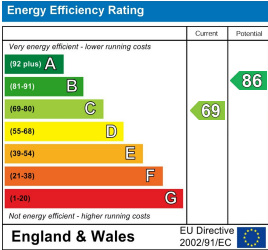
Floor Plan



Viewing

Please contact our Cauldwell Property Sales Office on 01908 304480 if you wish to arrange a viewing appointment for this property or require further information.

Energy Efficiency Graph



These particulars, whilst believed to be accurate are set out as a general outline only for guidance and do not constitute any part of an offer or contract. Intending purchasers should not rely on them as statements of representation of fact, but must satisfy themselves by inspection or otherwise as to their accuracy. No person in this firms employment has the authority to make or give any representation or warranty in respect of the property.