

## 8 Heston Walk, Milton Keynes, MK4 4JP

**£375,000**

Offered to the market with no onward chain, and positioned 50 metres from open woodland and green country walks, this four bedroom family home is in great condition, has a nice rear garden, garage & double driveway and is also located within walking distance to schools for all ages, local shops and transport links.

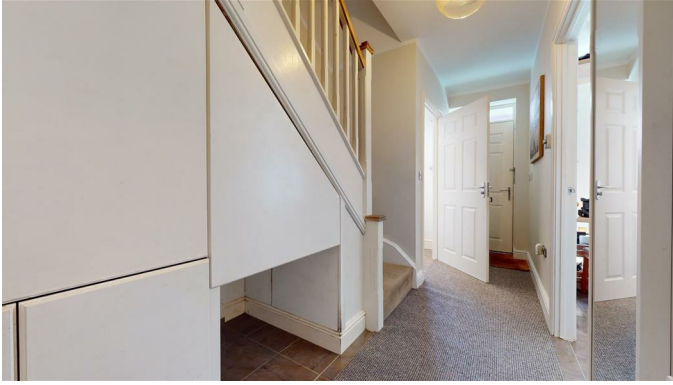
This great home starts with the entrance hall that leads to the cloakroom, the bay fronted kitchen diner and then to the living room at the rear. On the first floor are three bedrooms, two excellent doubles, and a family bathroom. The top floor is the main bedroom, with built in storage space and a sizeable en-suite.

Outside there is a small garden area to the front and then an enclosed rear garden that offers a clever pathway direct into the rear of the garage. The garage has power and light and a double length driveway in front.

Energy rating: C  
Council tax band: D



## ENTRANCE HALL



Front entrance door. Tiled flooring. Understairs storage area. Radiator. Skimmed ceiling. Stairs to second floor. Door to kitchen/breakfast room, living room and cloakroom.

## CLOAKROOM

Two piece suite comprising low level wc and wash hand basin. Radiator. Tiled flooring. Frosted double glazed window to front. Skimmed ceiling with spot lights.

## KITCHEN/BREAKFAST ROOM 15'0" x 11'1" (4.57 x 3.38)



Fitted with wall and base units with roll top worksurfaces incorporating sink drainer unit and mixer tap. Built in double stainless steel oven and hob with extractor. Double glazed bay window to front. Skimmed ceiling. Radiator. Space for American style fridge freezer. Built in dishwasher and washing machine. Tiled flooring. Spot lights.

## LIVING ROOM 16'0" x 11'0" (4.88 x 3.35)

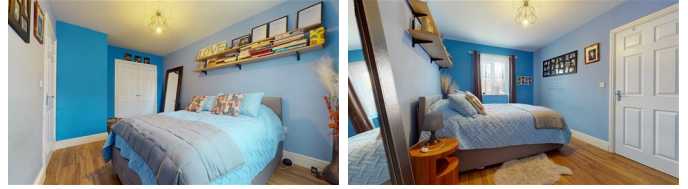


Double glazed French doors to rear. Double glazed windows to rear. Two radiators. Skimmed ceiling.

## FIRST FLOOR LANDING

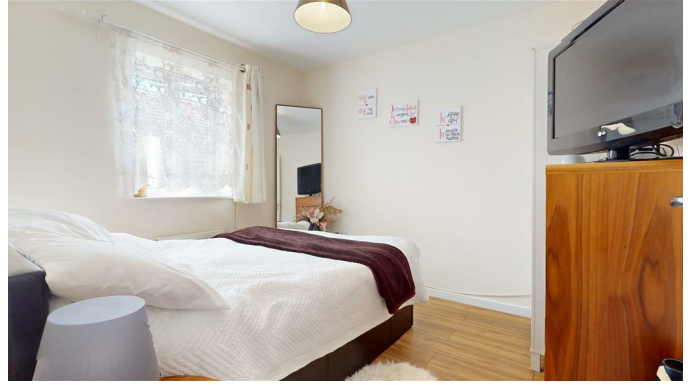
Doors to bedrooms two, three, four and bathroom.

## BEDROOM TWO 13'0" x 9'0" (3.96 x 2.74)



Double glazed window to rear. Radiator. Skimmed ceiling. Double door built in wardrobe.

## BEDROOM THREE 10'0" x 9'0" (3.05 x 2.74)



Double glazed window to front. Radiator. Skimmed ceiling.

## BEDROOM FOUR 7'0" x 6'0" (2.13 x 1.83)



Double glazed window to rear. Radiator. Skimmed ceiling.

## BATHROOM



Three piece suite comprising panelled bath with mixer tap and shower attachment, low level wc and



wash hand basin. Skimmed ceiling. Extractor. Heated towel rail. Part tiled.

### SECOND FLOOR LANDING

Airing cupboard. Skimmed ceiling. Stairs to second floor.

### MASTER BEDROOM 17'11" x 9'11" (5.46 x 3.02)



Double glazed window to front. Sky light Loft hatch. Skimmed ceiling. Door to ensuite.

### ENSUITE



Three piece suite comprising double tiled shower cubicle with wall mounted shower, low level wc and wash hand basin. Frosted double glazed window to rear. Skimmed ceiling. Spot lights. Extractor.

### REAR GARDEN



Enclosed and laid mainly to lawn with patio area. Wooden fence surround. Gated rear access.

### SINGLE GARAGE



Up and over door. Hardstanding driveway.

### FRONT GARDEN



Flower beds. Path to front door.

All measurements are approximate .The mention of appliances and/or services within these sales particulars does not imply that they are in full efficient working order. Please note that any services, heating systems or appliances have not been tested and no warranty can be given or implied as to their working order. **MORTGAGE & FINANCIAL** - The Mortgage Store can provide you with up to the minute information on all available rates. To arrange an appointment, telephone this office **YOUR HOME IS AT RISK IF YOU DO NOT KEEP UP REPAYMENTS ON A MORTGAGE OR OTHER LOANS SECURED ON IT.** Full quotation available on request. A suitable life policy may be required. Loans subject to status. Minimum age 18.

The above details have been submitted to our clients but at the moment have not been approved by them and we therefore cannot guarantee their accuracy and they are distributed on this basis. Please ensure that you have a copy of our approved details before committing yourself to any expense.

**MORTGAGE & FINANCIAL** - The Mortgage Store

can provide you with up to the minute information on all available rates. To arrange an appointment, telephone this office **YOUR HOME IS AT RISK IF YOU DO NOT KEEP UP REPAYMENTS ON A MORTGAGE OR OTHER LOANS SECURED ON IT.** Full quotation available on request. A suitable life policy may be required. Loans subject to status. Minimum age 18.

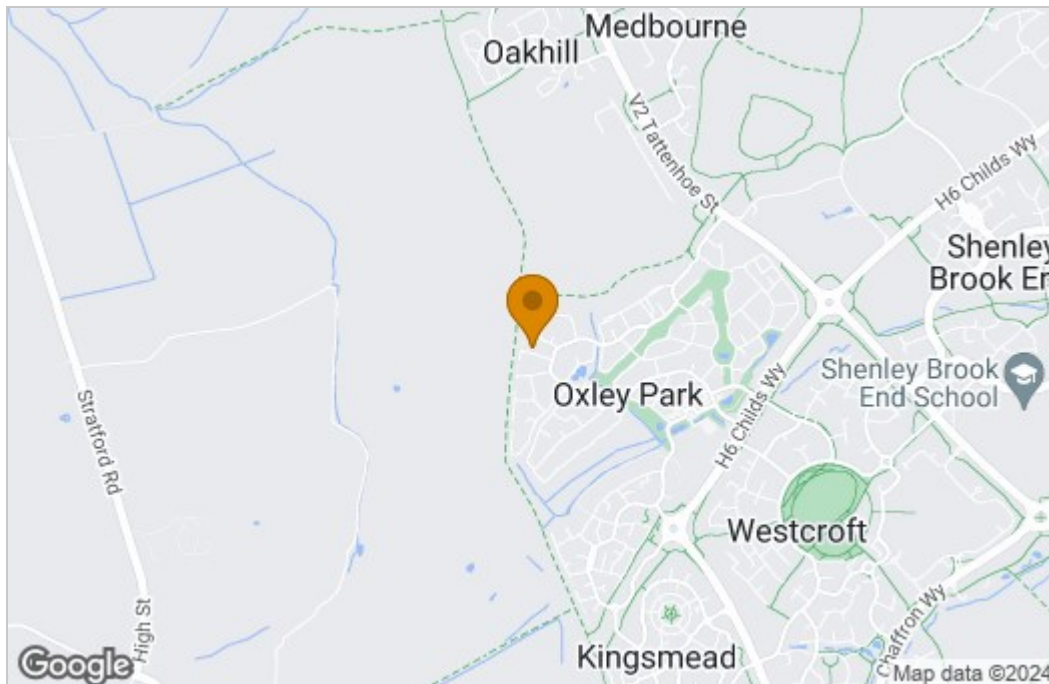
We routinely refer customers to Franklins solicitors, Gough Thorne and The Mortgage Store. It is your decision whether you choose to deal with them, in making that decision, you should know that we receive a referral fee in the region of £80 to £250 for recommending you to them

# Floor Plan

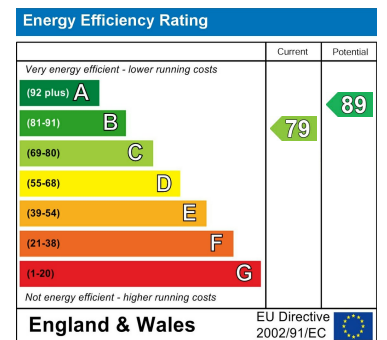


Whilst every attempt has been made to ensure the accuracy of the floorplan contained here, measurements of doors, windows, rooms and any other items are approximate and no responsibility is taken for any error, omission or mis-statement. This plan is for illustrative purposes only and should be used as such by any prospective purchaser. The services, systems and appliances shown have not been tested and no guarantee as to their operability or efficiency can be given.  
Made with Metropix ©2024

# Area Map



# Energy Efficiency Graph



These particulars, whilst believed to be accurate are set out as a general outline only for guidance and do not constitute any part of an offer or contract. Intending purchasers should not rely on them as statements of representation of fact, but must satisfy themselves by inspection or otherwise as to their accuracy. No person in this firm's employment has the authority to make or give any representation or warranty in respect of the property.