



- SEMI-DETACHED HOUSE
- 3 BEDROOMS
- GROUND FLOOR SHOWER ROOM/WC
- FIRST FLOOR FAMILY BATHROOM
- RECENTLY REFURBISHED
- AVAILABLE IMMEDIATELY
- WEST REAR GARDEN
- COUNCIL TAX : C
- EPC RATING : C

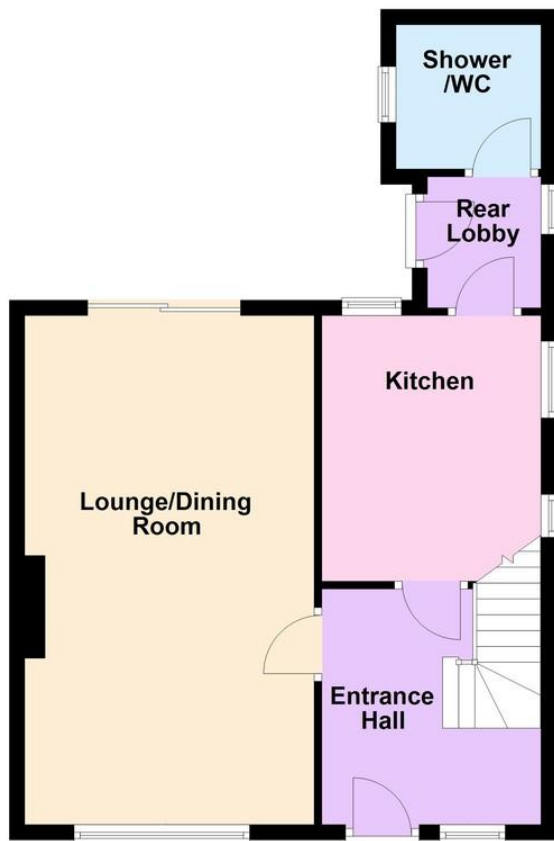
39 Lawrence Avenue, Rustington BN16 3HX

£1,500 pcm

HAWKE & METCALFE
INDEPENDENT ESTATE AGENTS

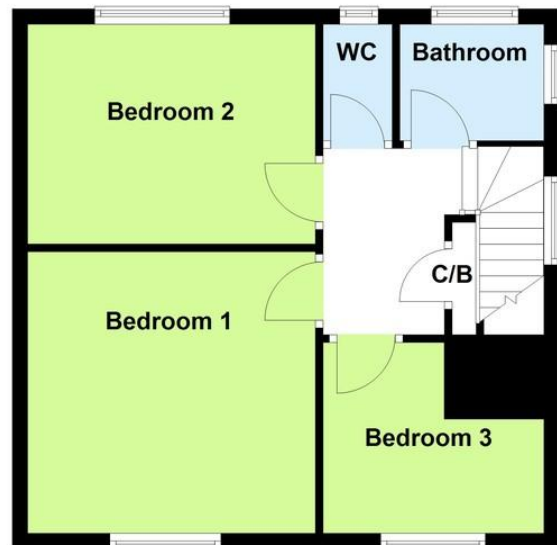
Ground Floor

Approx. 49.4 sq. metres (532.1 sq. feet)



First Floor

Approx. 42.6 sq. metres (458.5 sq. feet)



Total area: approx. 92.0 sq. metres (990.6 sq. feet)

A 3 BEDROOM SEMI-DETACHED HOUSE IN RUSTINGTON, AVAILABLE TO RENT IMMEDIATELY. THE PROPERTY HAS JUST BEEN REFURBISHED WITH NEW FLOOR COVERINGS THROUGHOUT. PETS CONSIDERED WITH A £20 P/C/M PET PREMIUM.

ENTRANCE HALL

LOUNGE/DINER

20' x 12' 4" (6.1m x 3.76m)

KITCHEN

11' 2" x 9' 4" (3.4m x 2.84m)

REAR LOBBY

SHOWER/WC

BEDROOM 1

12' 4" x 10' 7" (3.76m x 3.23m)

BEDROOM 2

12' 5" x 8' 11" (3.78m x 2.72m)

BEDROOM 3

9' 4" x 8' 2" (2.84m x 2.49m)

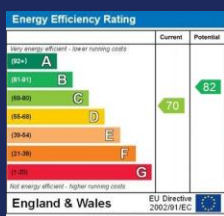
FAMILY BATHROOM

SEPARATE WC

FRONT GARDEN

WEST FACING REAR GARDEN

The information and measurements contained within these details are for guidance only and do not form part of any contract.



90 THE STREET, RUSTINGTON, WEST
SUSSEX, BN16 3NJ

lettings@hawkemetcalf.co.uk

www.hawkemetcalf.co.uk

01903 850450