

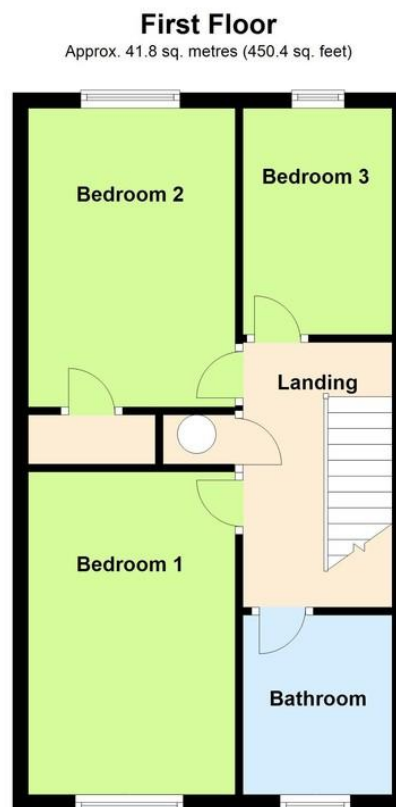
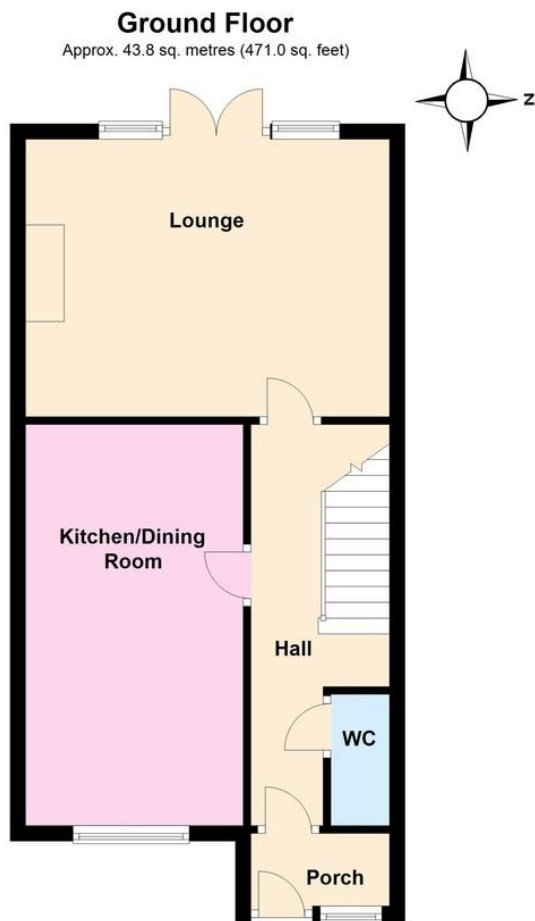


- **** Library Photos ****
- **3 Bedroom Terrace House**
- **Kitchen/Dining Room**
- **Gas Central Heating**
- **West Facing Rear Garden**
- **Pets Considered - £20 Pet Premium**
- **Available End of June**
- **Council Tax Band - 'C'**
- **EPC Rating - 'C'**

Fletcher Way, Angmering BN16 4HG

£1,350 pcm

HAWKE & METCALFE
INDEPENDENT ESTATE AGENTS



Total area: approx. 85.6 sq. metres (921.4 sq. feet)

** LIBRARY PHOTOS **

DOUBLE GLAZED PORCH

ENTRANCE HALL

CLOAKROOM

LOUNGE

15' 6" x 11' 9" (4.72m x 3.58m)

KITCHEN/DINING ROOM

17' x 9' 3" (5.18m x 2.82m)

FIRST FLOOR LANDING

BEDROOM 1

13' 8" x 8' 10" (4.17m x 2.69m)

BEDROOM 2

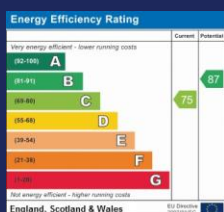
12' 8" x 8' 9" (3.86m x 2.67m)

BEDROOM 3

9' 7" x 6' 8" (2.92m x 2.03m)

BATH/SHOWER ROOM

The information and measurements contained within these details are for guidance only and do not form part of any contract.



**90 THE STREET, RUSTINGTON, WEST
SUSSEX, BN16 3NJ**

lettings@hawkemetcalf.co.uk

www.hawkemetcalf.co.uk

01903 850450