



2 Barton Court, The Street, Rustington BN16 3PU
£260,000 Leasehold

HAWKE & METCALFE 
INDEPENDENT ESTATE AGENTS

INDEPENDENT ESTATE & LETTING AGENTS

- Retirement Development
- 2 Bedroom First Floor Flat
- En-suite Bathroom WC
- Additional Shower Room W/C
- Gas Central Heating
- Available Immediately - No Chain
- Residents Lounge & Laundry Room
- Council Tax Band D
- EPC Rating - TBA

A first floor two bedroom flat, set within a very popular retirement development in central Rustington, just off The Street that runs into the comprehensive shopping parade.

In brief the accommodation comprises:- private front door to entrance hall, stairs and a chair lift to first floor, kitchen, two bedrooms, en-suite bathroom/WC and additional separate shower room/WC.

Features include gas central heating, double glazing, gated main entrance with security entryphone system and the property is offered for sale with no onward chain. 24 hour alarm pull cord and on-site part time manager.

Outside there are well maintained communal gardens and to the front there are resident parking bays.

Barton Court is situated midway along The Street, which in turns runs directly into the village centre and shops. Buses also run along The Street outside Barton Court, which is adjacent to Westcourt Medical Centre.

Age Restrictions - 55 years and over

Lease - TBC

Service Charge - TBC

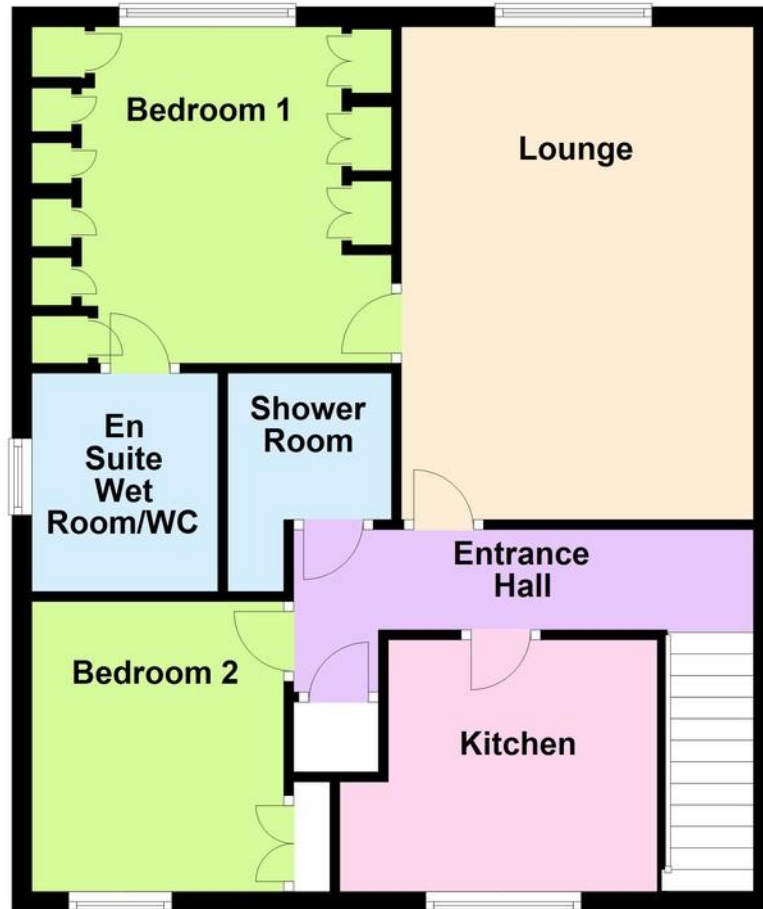
Pets not Permitted.

Managing Agents - Hobdens Property Management Ltd.

The information and measurements contained within these details are for guidance only and do not form part of any contract. The mention of any appliance or heating system does not imply that they are necessarily in working condition.



Approx. 63.0 sq. metres (677.7 sq. feet)



Total area: approx. 63.0 sq. metres (677.7 sq. feet)

SECURE GATED ENTRANCE

PERSONAL FRONT DOOR

STAIRS & CHAIRLIFT TO FIRST FLOOR

HALLWAY

LOUNGE

16' 2" x 11' 7" (4.93m x 3.53m)

KITCHEN

9' 10" x 8' 3" (3m x 2.51m)

BEDROOM 1

11' 10" x 11' 0" (3.61m x 3.35m)

ENSUITE BATHROOM/WC

BEDROOM 2

9' 6" x 8' 3" (2.9m x 2.51m)

SHOWER ROOM/WC

COMMUNAL GARDENS

RESIDENTS LOUNGE

LAUNDRY ROOM

RESIDENTS CAR PARK

EPC TO FOLLOW



01903 850450

**90 THE STREET, RUSTINGTON, WEST SUSSEX,
BN16 3NJ**

sales@hawkemetcalf.co.uk

www.hawkemetcalf.co.uk

