

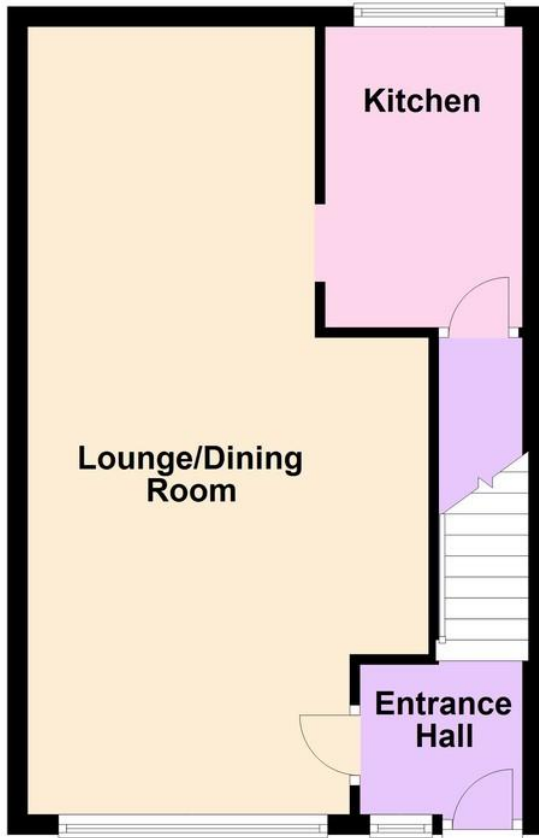


- Library Photos
- End of Terrace House
- South Facing Rear Garden
- Large Lounge/Dining Room
- Modern Kitchen
- 3 Bedrooms
- NO PETS
- Council Tax Band - 'C'
- EPC Rating: - 'C'

1 Wolstenbury Road, Rustington BN16 3LB
£1,300 pcm

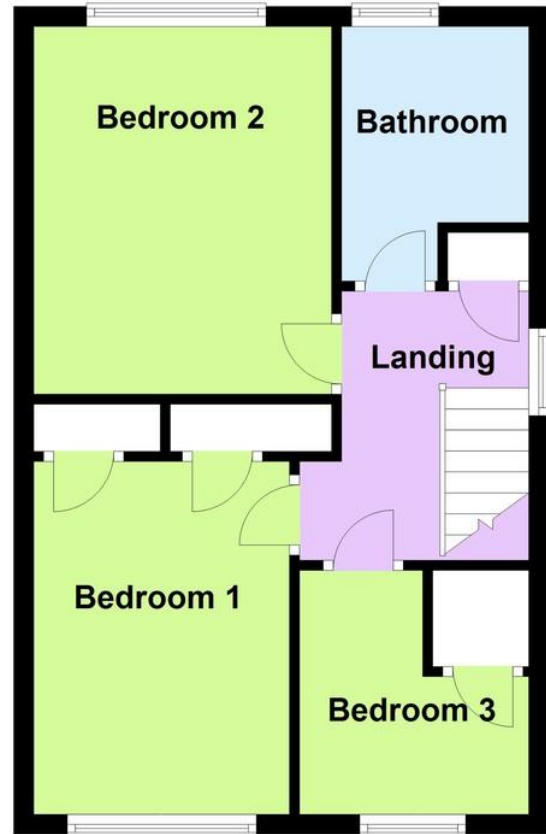
Ground Floor

Approx. 38.7 sq. metres (417.0 sq. feet)



First Floor

Approx. 38.7 sq. metres (417.0 sq. feet)



Total area: approx. 77.5 sq. metres (834.1 sq. feet)

A modern 3 bedroom end of terrace house comprising: - entrance hall, large through lounge/dining room, modern kitchen, three bedrooms and a modern bathroom/WC. Outside there is an open plan front garden and an enclosed south facing rear garden. Features include: - gas central heating and double glazing. Wolstenbury Road is to the north of Rustington and is off the Worthing Road, approached via Wallace Road and Duncton Road. **NO PETS**

ENTRANCE HALL

LOUNGE/DINING ROOM

25' 9" x 13' (7.85m x 3.96m)
max

KITCHEN

9' 9" x 6' 5" (2.97m x 1.96m)

BEDROOM 1

12' x 9' 7" (3.66m x 2.92m)

BEDROOM 2

11' 8" x 8' 4" (3.56m x 2.54m)

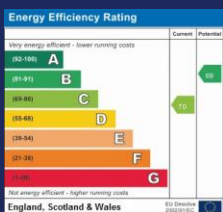
BEDROOM 3

8' 6" x 7' 6" (2.59m x 2.29m)
max

BATHROOM/WC

FRONT & REAR GARDENS

The information and measurements contained within these details are for guidance only and do not form part of any contract.



90 THE STREET, RUSTINGTON, WEST
SUSSEX, BN16 3NJ

lettings@hawkemetcalf.co.uk

www.hawkemetcalf.co.uk

01903 850450