



23 Admirals Walk, Littlehampton BN17 6RH
£285,000 Freehold

**HAWKE &
METCALFE** 
INDEPENDENT ESTATE AGENTS

INDEPENDENT ESTATE & LETTING AGENTS

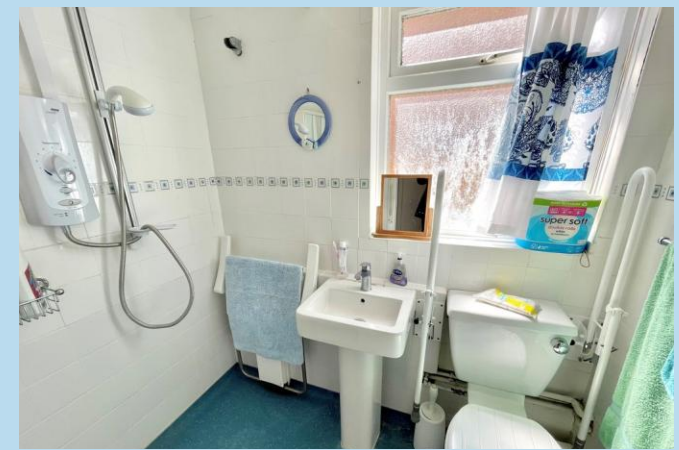
- Semi Detached Bungalow
- 2 Bedrooms
- Electric Heating
- No Onward Chain
- Double Glazing
- Borders of Rustington & Littlehampton
- Garage
- Council Tax Band 'B'
- EPC Rating 'E'

A semi detached bungalow offered for sale with no onward chain.

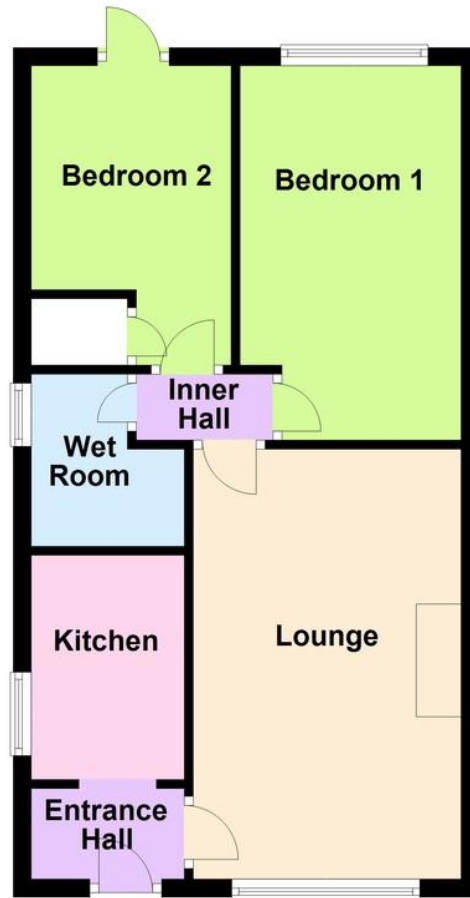
In brief the accommodation comprises: - entrance hall, kitchen, lounge, inner hall, 2 bedrooms and a wet room/WC.

Outside there is a lawned front garden and a rear garden laid to lawn with rear access to the garage, which is in a block immediately to the rear of the bungalow.

The property has electric heating and double glazing and is located up a small walkway between Admirals Walk and Westlands, being on the borders of Littlehampton and Rustington.



Approx. 43.2 sq. metres (465.2 sq. feet)



Total area: approx. 43.2 sq. metres (465.2 sq. feet)

ENTRANCE HALL

KITCHEN

8' 2" x 5' 6" (2.49m x 1.68m)

LOUNGE

15' 7" x 9' 9" (4.75m x 2.97m)

INNER HALL

BEDROOM 1

13' 7" x 8' 1" (4.14m x 2.46m)

BEDROOM 2

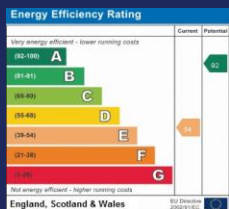
8' x 7' 4" (2.44m x 2.24m)

WET ROOM/WC

FRONT GARDEN

REAR GARDEN

GARAGE



01903 850450

90 THE STREET, RUSTINGTON, WEST SUSSEX,
BN16 3NJ

sales@hawkemetcalf.co.uk

www.hawkemetcalf.co.uk

