






Ian Anthony
The Estate Agents

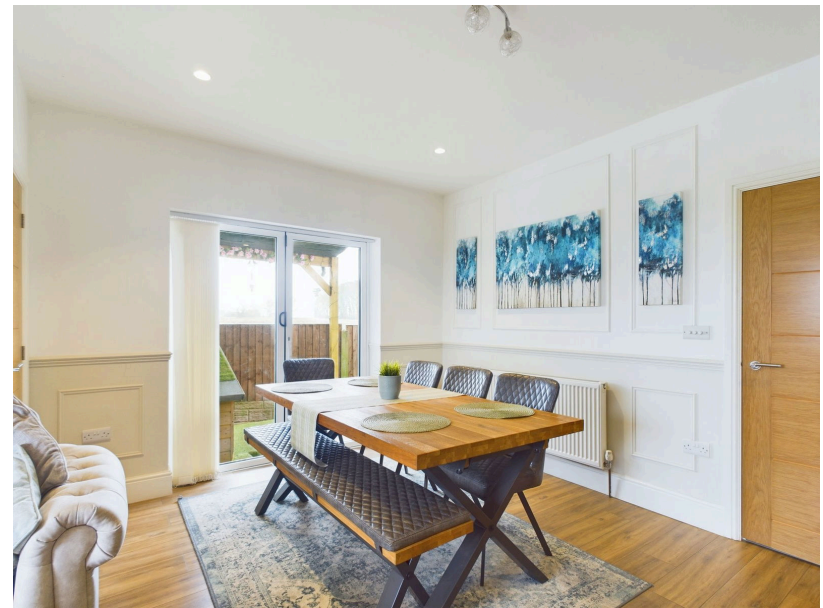
Croppers Lane, Bickerstaffe, Lancashire, L39 9EJ

Guide Price £335,000

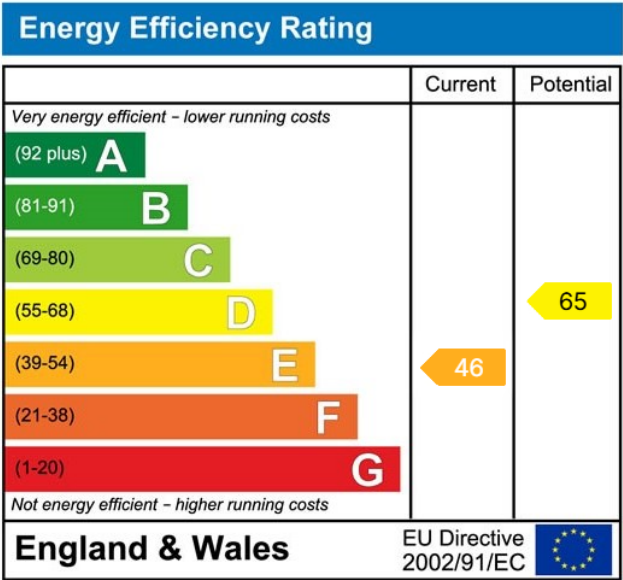
 3  2  1



- SEMI DETACHED
- LIVING ROOM / DINING ROOM
- UTILITY ROOM & STORAGE ROOM
- THREE BEDROOMS
- FAMILY BATHROOM
- DRIVEWAY AND GARAGE
- GARDENS FRONT AND REAR
- SEMI RURAL LOCATION



This charming semi-detached family home is set in a peaceful semi-rural location. The ground floor features a spacious kitchen/diner, a cozy living room, a cloakroom, an inner hallway, a utility room, and a store room. Upstairs, there are three well-proportioned bedrooms and a family bathroom, making it an ideal home for families seeking both comfort and convenience.



These particulars, whilst believed to be accurate are set out as a general outline only for guidance and do not constitute any part of an offer or contract. Intending purchasers should not rely on them as statements of representation of fact, but must satisfy themselves by inspection or otherwise as to their accuracy. No person in this firms employment has the authority to make or give any representation or warranty in respect of the property.