



**Ian Anthony**  
The Estate Agents

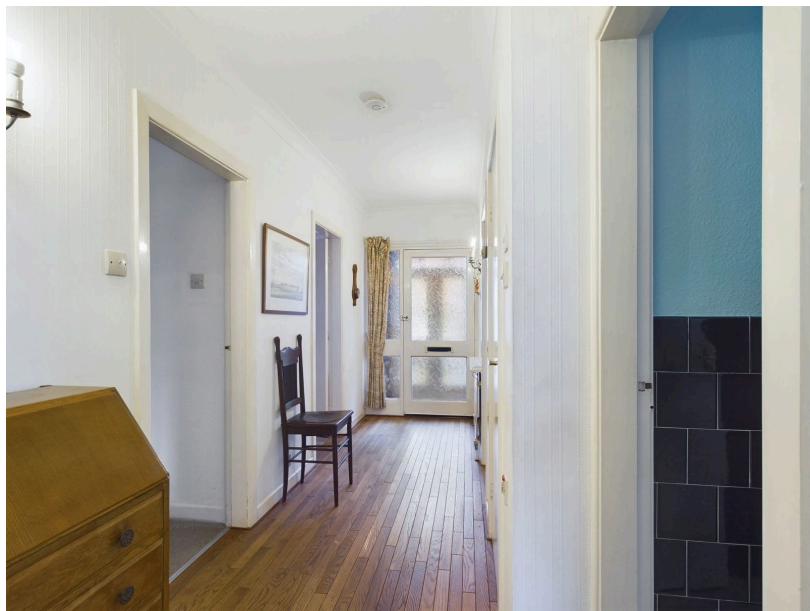
# St Bedes Close, Ormskirk, L39 4TL

Guide Price £265,000

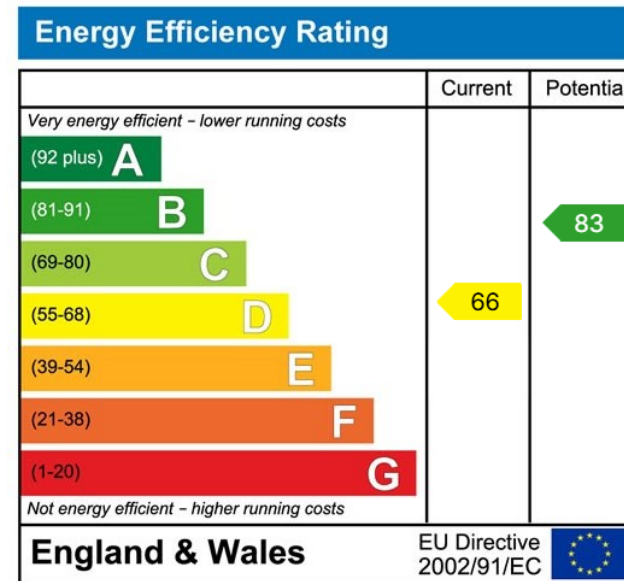
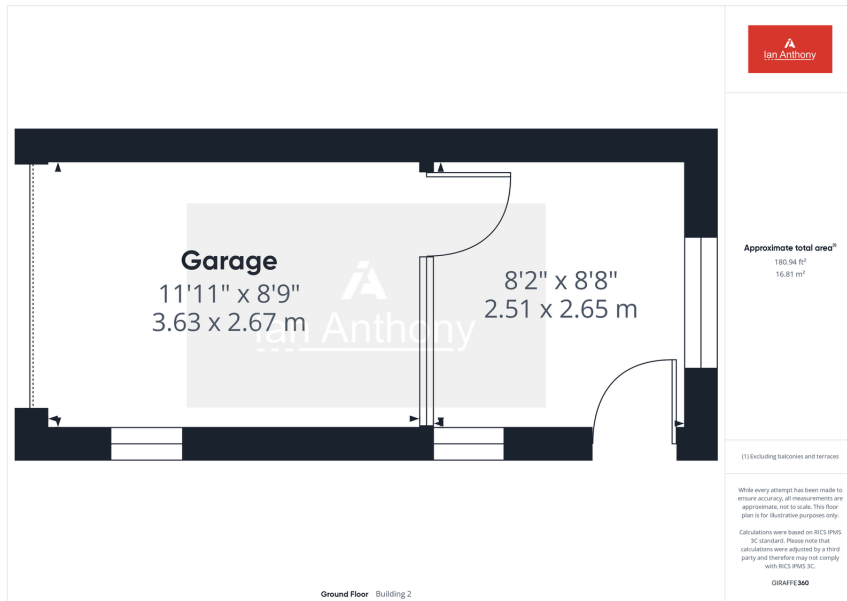
🛏️ 2 🍽️ 1 🚗 1



- NO UPWARD CHAIN
- SEMI-DETACHED TRUE BUNGALOW
- LIVING ROOM
- KITCHEN/DINER
- TWO BEDROOMS
- BATHROOM
- GARAGE & WORKSHOP
- GARDENS FRONT & REAR
- POPULAR RESIDENTIAL LOCATION



This well-maintained two-bedroom semi-detached bungalow is situated in a peaceful and sought-after location on St Bedes Close, Ormskirk, offering a comfortable and convenient living space. Perfectly suited for those looking for single-level living, the property combines practicality with a warm and inviting atmosphere.



These particulars, whilst believed to be accurate are set out as a general outline only for guidance and do not constitute any part of an offer or contract. Intending purchasers should not rely on them as statements of representation of fact, but must satisfy themselves by inspection or otherwise as to their accuracy. No person in this firm's employment has the authority to make or give any representation or warranty in respect of the property.

5 Burscough Street, Ormskirk, Lancashire, L39 2EG

Tel: 01695 580888 Email: [enquiries@iananthonystates.co.uk](mailto:enquiries@iananthonystates.co.uk) <https://www.iananthonystates.co.uk>