



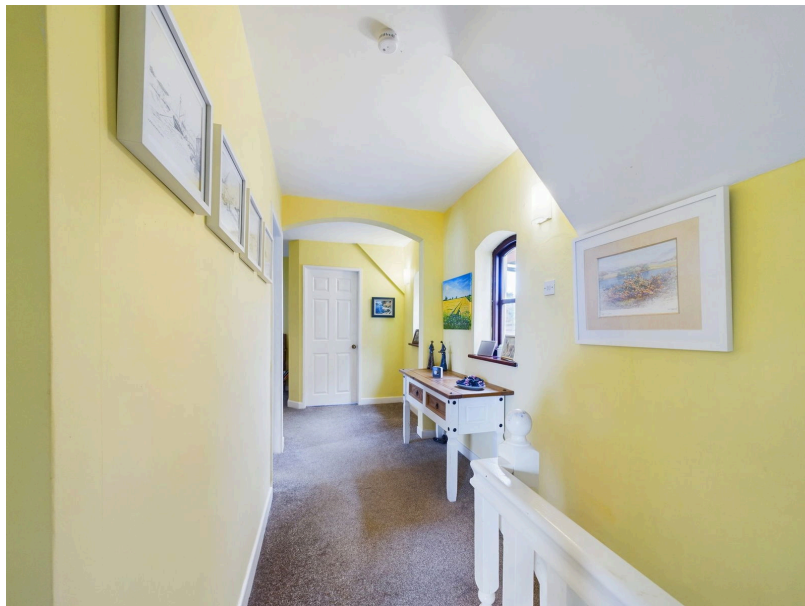
**Ian Anthony**  
The Estate Agents



# Church View Cottage, Liverpool Road, Bickerstaffe, Ormskirk, L39 0EQ

Guide Price £399,950

🛏️ 4 🚿 3 🛋️ 2



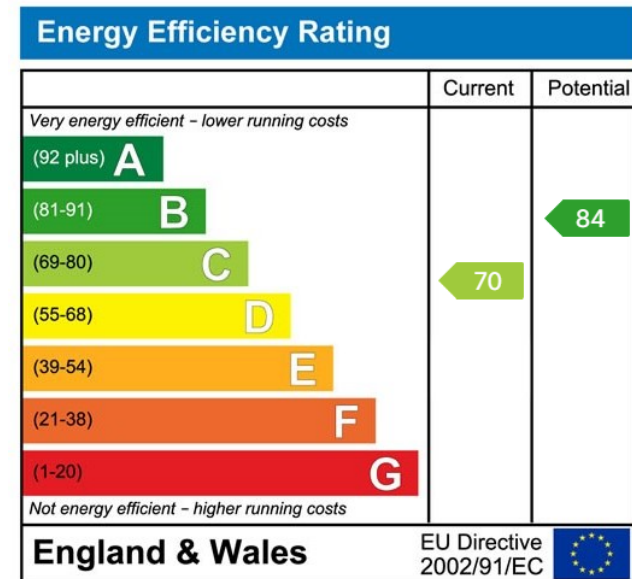
- NO CHAIN!
- DETACHED COTTAGE
- OPEN PLAN KITCHEN/DINER
- NEW AIR SOURCE HEAT PUMP
- FOUR BEDROOMS
- COUNTRYSIDE VIEWS
- SEMI RURAL LOCATION
- THREE BATHROOMS
- NEWLY LANDSCAPED FRONT AND REAR GARDEN
- HOT TUB





## SUMMARY

Nestled in the picturesque semi-rural village of Bickerstaffe, this beautifully presented 4-bedroom detached cottage offers an ideal blend of modern comfort and countryside charm. With stunning views of open country fields from the front, the property has been thoughtfully updated throughout, making it move-in ready with no onward chain.



These particulars, whilst believed to be accurate are set out as a general outline only for guidance and do not constitute any part of an offer or contract. Intending purchasers should not rely on them as statements of representation of fact, but must satisfy themselves by inspection or otherwise as to their accuracy. No person in this firm's employment has the authority to make or give any representation or warranty in respect of the property.

5 Burscough Street, Ormskirk, Lancashire, L39 2EG

Tel: 01695 580888 Email: [enquiries@iananthonystates.co.uk](mailto:enquiries@iananthonystates.co.uk) <https://www.iananthonystates.co.uk>