



## Upper Bridge Road , Chelmsford, CM2 0RU

"Double Click To Add Sticker"

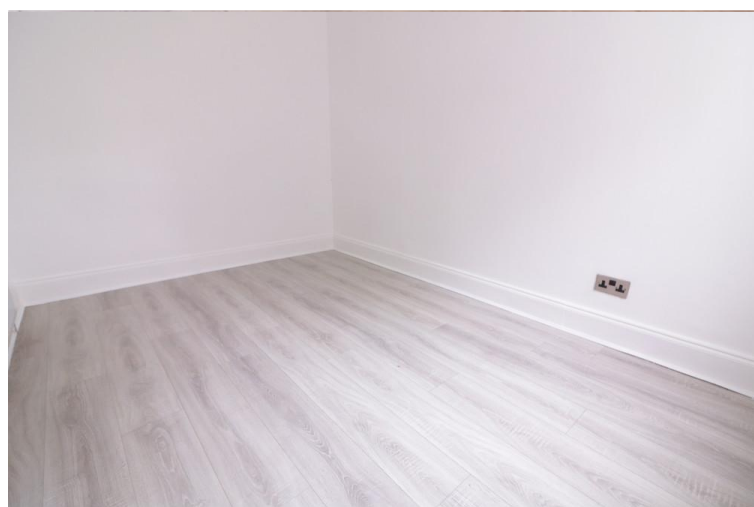
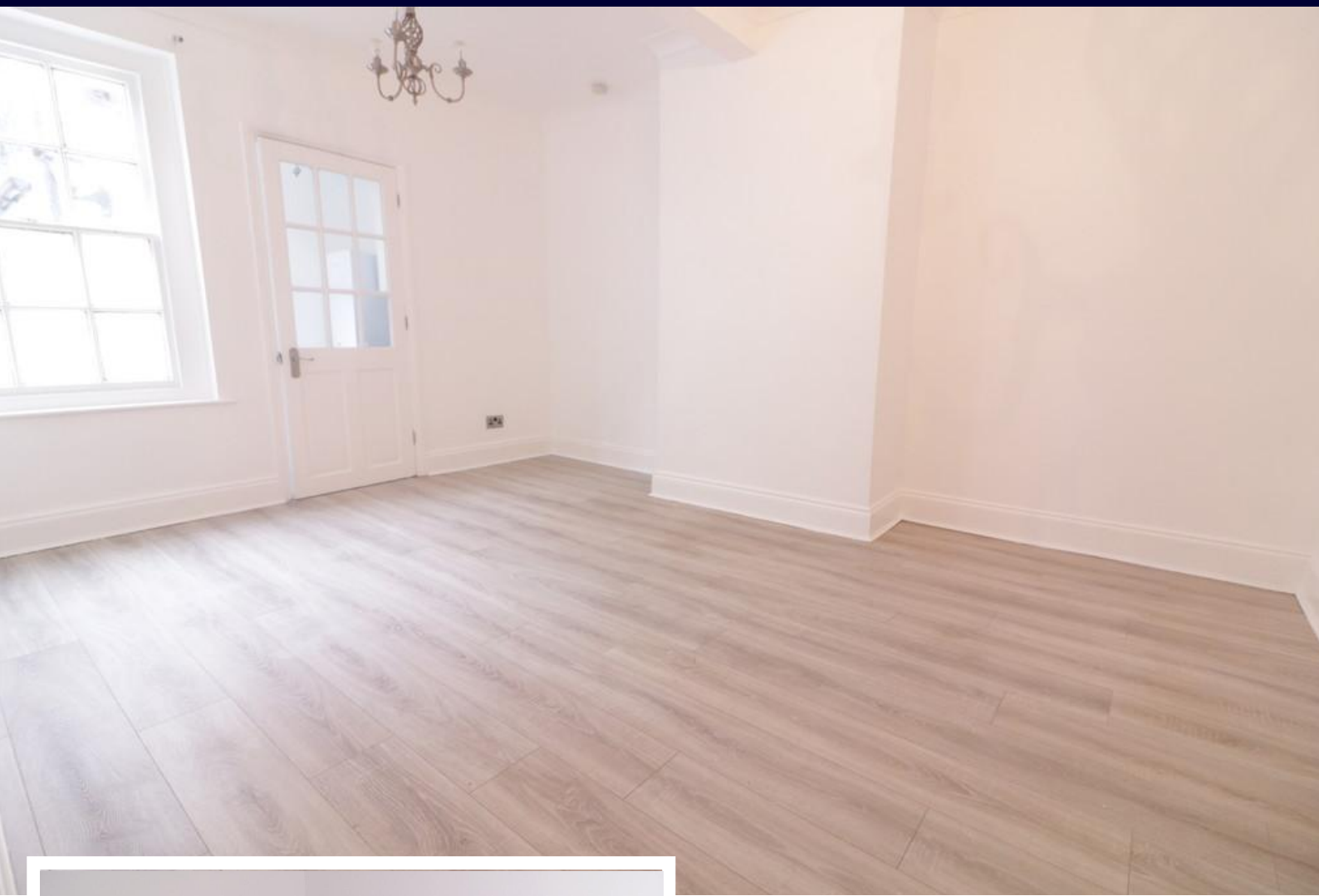
- NO ONWARD CHAIN
- OWN GARDEN BACKING ALLOTMENTS
- TWO BEDROOMS
- DOUBLE GLAZED

### £250,000

OPEN DAY SUNDAY 28th 10.30 onwards.

Fantastic opportunity to purchase this recently refurbished two bedroom ground floor flat with its own garden backing onto allotments. Permit parking provided. Very desirable location ideal for first time buyers. Vacant and ready to move into. Book now to view.





#### **HALL**

#### **LIVING ROOM**

14' 6" x 10' 9" (4.42m x 3.28m)

#### **KITCHEN**

12' 3" x 6' 7" (3.73m x 2.01m)

#### **BATHROOM**

#### **BEDROOM**

12' 3" x 12' 8" (3.73m x 3.86m)

11' 3" x 7' 7" (3.43m x 2.31m)

#### **GARDEN**

#### **AGENTS NOTES**

VACANT two bedroom ground floor flat located in a very desirable location within reach of the Town Centre.

The property has just been refurbished throughout including re-decoration and flooring.

Versatile accommodation which offers two bedrooms or a separate dining room if desired. Double glazing and gas central heating with its own garden area backing onto allotments. Parking permit provided.





**GROUND FLOOR**  
APPROX. 54.0 SQ. METRES (580.9 SQ. FEET)



**205 UPPER BRIDGE STREET, CHELMSFORD**

%epcGraph\_c\_1\_347%

Regulated by RICS

t. 01268 774316  
More than an estate agent  
[www.hairandson.co.uk](http://www.hairandson.co.uk)

**Residential Sales**  
6 High Street  
Rayleigh  
Essex SS6 7EF

