



Paignton Close

Rayleigh

- NO ONWARD CHAIN
- 4/5 BEDROOMS
- DETACHED DOUBLE GARAGE
- FURTHER OFF ROAD PARKING



Offers In Excess Of £500,000

Prominent detached four/five bedroom home with detached double garage and parking. Very convenient for schools and access to Rayleigh Town Centre. En suite main bedroom and ground floor cloakroom. NO ONWARD CHAIN Kitchen and separate utility room. Dining room/bedroom ground floor.





AGENTS NOTES

NO ONWARD CHAIN this fantastic four/five bedroom detached house occupies a corner plot set in a quiet location yet so central for access to the Rayleigh Town Centre as well as great schools.

The main hallway is fitted with solid wood flooring with a modern glass stairwell leading to the first floor.

Modern ground floor cloakroom and separate Utility Room.

The kitchen is fitted to three walls with double doors opening out to the garden and garage.

The main living room is a generous size and a separate dining room is currently being used as the fifth bedroom.

The first floor enjoys a very nice family bathroom with four bedrooms spread over this floor currently adapted by the current occupier with the fourth bedroom being used as a huge walk in wardrobe but the main doorway still exist to reinstate it as a bedroom once again if desired.



Externally there is a landscaped garden with direct access to the detached double garage which internally measures 16' x 16' with a remote up and over door as well as further parking in front.

Gas central heating and double glazing.

HALLWAY

LOUNGE

15' 3" x 13' 10" (4.65m x 4.22m)

DINING ROOM / BEDROOM

11' 9" x 10' 6" (3.58m x 3.2m)

CLOAKROOM

KITCHEN

12' 0" x 7' 7" (3.66m x 2.31m)

UTILITY ROOM

5' 9" x 5' 8" (1.75m x 1.73m)

LANDING

BEDROOM / EN-SUITE

13' 6" x 11' 4" (4.11m x 3.45m)

BEDROOM

9' 8" x 9' 8" (2.95m x 2.95m)

BEDROOM

12' 7" x 7' 3" (3.84m x 2.21m)

BEDROOM

9' 8" x 6' 6" (2.95m x 1.98m)

BATHROOM

DETACHED DOUBLE GARAGE

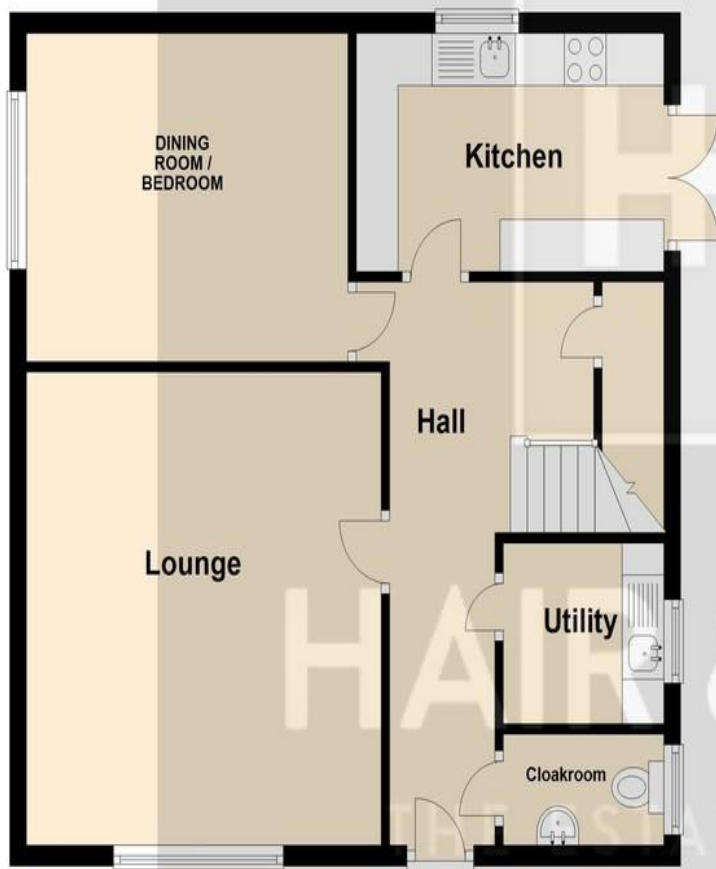
GARDEN

These particulars are accurate to the best of our knowledge but do not constitute an offer or contract. Photos are for representation only and do not imply the inclusion of fixtures and fittings. The floor plans are not to scale and only provide an indication of the layout.



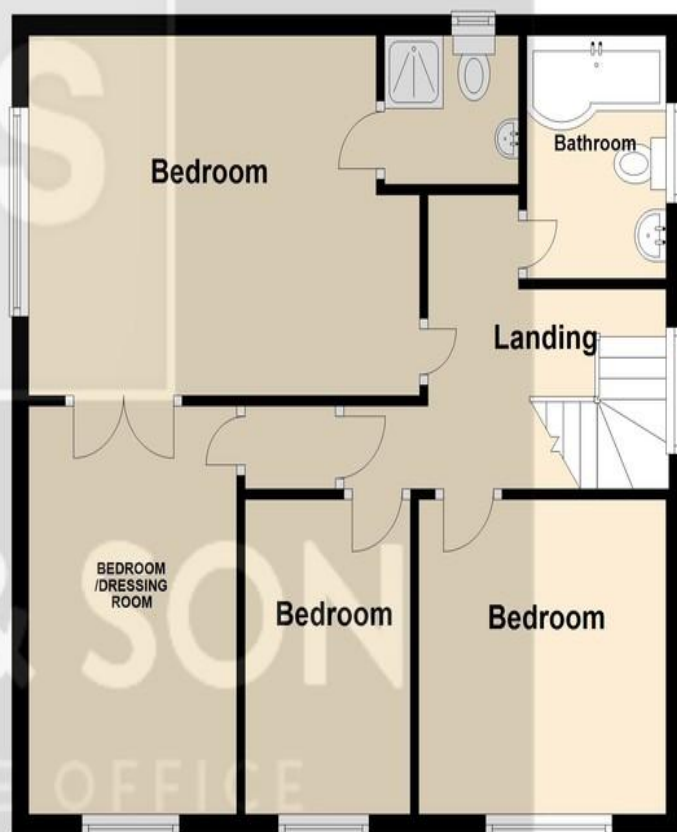
Ground Floor

Approx. 59.4 sq. metres (639.9 sq. feet)



First Floor

Approx. 57.0 sq. metres (613.8 sq. feet)



Total area: approx. 116.5 sq. metres (1253.7 sq. feet)

Regulated by RICS

t. 01268 774316
More than an estate agent
www.hairandson.co.uk

Residential Sales
6 High Street
Rayleigh
Essex SS6 7EF

