



Woodside Road

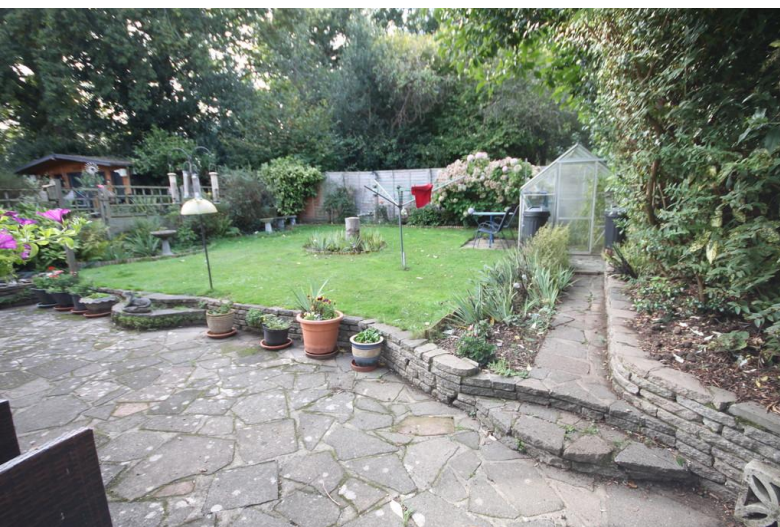
Hockley

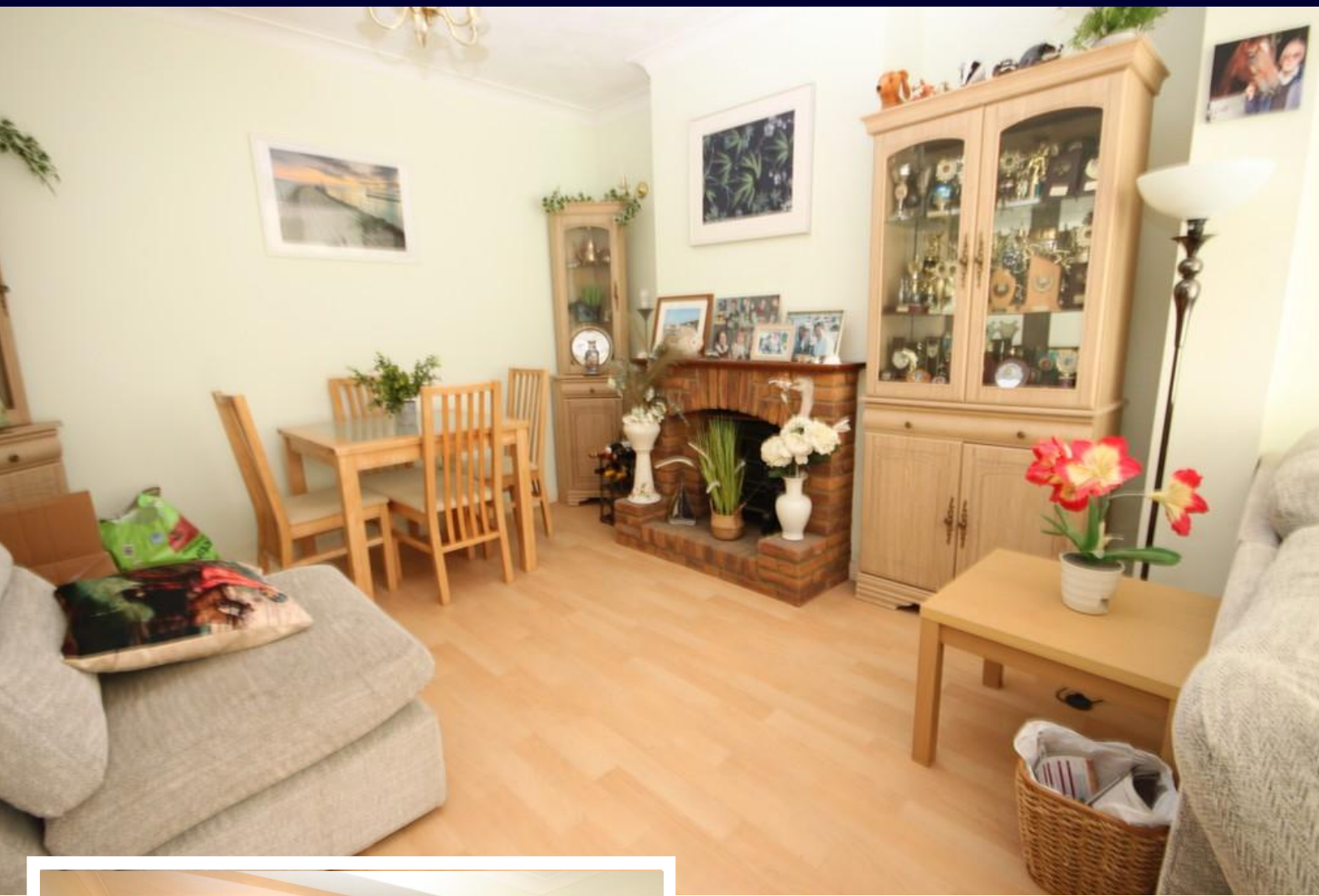
- WEST BACKING GARDEN
- GARAGE AND PARKING
- THREE DOUBLE BEDROOMS
- QUIET PRIVATE CUL DE SAC



Guide Price £460,000

Situated in a semi rural area of Hockley only a short distance to Hockley woods with regular bus routes to Hockley and Rayleigh. Three double bedrooms. Extended to the rear with a West backing garden. Great size living room and modern kitchen and wet room. Double glazed, gas central heating.





AGENTS NOTES

This large extended bungalow is situated in a highly sought after semi rural area of Hockley in a quiet Cul De Sac yet only a short stroll to Hockley woods a paradise for dog lovers. Regular bus routes to both Hockley and Rayleigh are virtually on the door step.

Three double bedrooms compliment this extended home with a warm and cozy lounge opening out to the west backing garden which is private and secluded.

Modern fitted kitchen as well as a modern wet room just add to the desirability.

Plenty of off road parking leads to the garage at the side and in addition there is double glazing and gas central heating.



HALL

LIVING ROOM

22' 6" x 10' 9" (6.86m x 3.28m)

KITCHEN

10' 9" x 9' 3" (3.28m x 2.82m)

WET ROOM

BEDROOM

10' 9" x 10' 6" (3.28m x 3.2m)



BEDROOM

11' 0" x 10' 6" (3.35m x 3.2m)

BEDROOM

10' 6" x 9' 6" (3.2m x 2.9m)

GARAGE

OFF ROAD PARKING

WEST BACKING SECLUDED GARDEN



These particulars are accurate to the best of our knowledge but do not constitute an offer or contract. Photos are for representation only and do not imply the inclusion of fixtures and fittings. The floor plans are not to scale and only provide an indication of the layout.



Ground Floor

Approx. 77.2 sq. metres



Total area: approx. 77.2 sq. metres

Regulated by RICS

t. 01268 774316

More than an estate agent

www.hairandson.co.uk

Residential Sales

6 High Street
Rayleigh
Essex SS6 7EF

