



## Meadow Road Hullbridge

- EARLY VACANT POSSESSION
- THREE BEDROOMS
- 28'6 LOUNGE
- 17'7 X 14'9 DETACHED GARAGE



## Guide Price £385,000

Very deceiving extended three bedroom chalet with two rooms in the roof space, exceptional 28'6 lounge further bedroom to the ground floor and large well tended garden with 17'7 x 14' 9 garage and own driveway.. Must be seen....





#### AGENTS NOTES

This property may appear to look like a bungalow but come and be very surprised!

It has been extended to create two double bedrooms within the roof space as well as an additional bedroom to the ground floor.

The property is accessed through the double glazed porch which opens up to the magnificent size living room measuring 28'6 in depth with double glazed doors opening out to the well tended garden.

From the lounge there is a door leading to the inner hall which gives access to the ground floor bedroom, family shower room and fitted kitchen.

Double glazed and gas central heating also compliment this surprisingly large home.

What a great location as well with easy access to local schools, buses and shops with the River Crouch and



popular pub overlooking the river just a short distance away. Ten minute drive to Rayleigh and great road links for Chelmsford and surrounding areas.

#### **PORCH**

#### **LIVING ROOM**

28' 6" x 10' 10" (8.69m x 3.3m)

#### **INNER HALL**

12' 8" x 3' 6" (3.86m x 1.07m)

#### **KITCHEN**

8' 9" x 9' 5" (2.67m x 2.87m)

#### **BATHROOM**

#### **BEDROOM**

10' 3" x 9' 5" (3.12m x 2.87m)

#### **LANDING**

12' 9" x 8' 7" (3.89m x 2.62m)

#### **BEDROOM**

12' 9" x 10' 6" (3.89m x 3.2m)

#### **BEDROOM**

12' 9" x 8' 7" (3.89m x 2.62m)

#### **GARAGE**

17' 7" x 14' 9" (5.36m x 4.5m)

#### **GARDEN**

These particulars are accurate to the best of our knowledge but do not constitute an offer or contract. Photos are for representation only and do not imply the inclusion of fixtures and fittings. The floor plans are not to scale and only provide an indication of the layout.



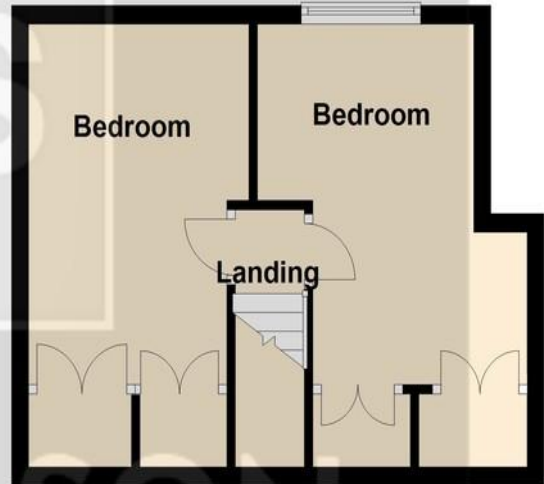
## Ground Floor

Approx. 64.0 sq. metres



## First Floor

Approx. 26.6 sq. metres



Total area: approx. 90.5 sq. metres

Regulated by RICS

t. 01268 774316  
More than an estate agent  
[www.hairandson.co.uk](http://www.hairandson.co.uk)

Residential Sales  
6 High Street  
Rayleigh  
Essex SS6 7EF

