



Whitehouse Meadows

Leigh-on-Sea

- VACANT
- FOUR BEDROOMS
- EXTENDED KITCHEN
- QUIET ROAD



Guide Price £350,000

Vacant four bedroom mid terraced home with very large internal rooms. Requiring updating but has so much potential and situated close to schools and shops. Extended Kitchen and separate utility room, ground floor cloaks, gas central heating. Book early on this one! key held.





AGENTS NOTES

Fantastic chance to acquire a substantial four bedroom house which has had historically a kitchen extension to the rear. The ground floor offers a large living room inner hallway, ground floor cloakroom, separate utility room with access to the garden along with a dining area and fitted kitchen.

The first floor features four generous size bedrooms and bathroom.

The location is perfect for sought after schools and close to regular bus routes and shops.

It includes gas central heating with a combination boiler. Integral garage with remote roller door.

PORCH

HALL

LOUNGE

14' 10" x 15' 0" (4.52m x 4.57m)



INNER HALL

DINING AREA

11' 2" x 9' 6" (3.4m x 2.9m)

KITCHEN

10' 4" x 9' 4" (3.15m x 2.84m)

CLOAKROOM

UTILITY ROOM

9' 0" x 9' 0" (2.74m x 2.74m)



LANDING

BATHROOM

BEDROOM

14' 2" x 9' 0" (4.32m x 2.74m)

BEDROOM

10' 10" x 9' 6" (3.3m x 2.9m)

BEDROOM

15' 4" x 9' 3" (4.67m x 2.82m)



BEDROOM

10' 8" x 12' 2" (3.25m x 3.71m)

GARAGE

15' 6" x 10' 0" (4.72m x 3.05m)

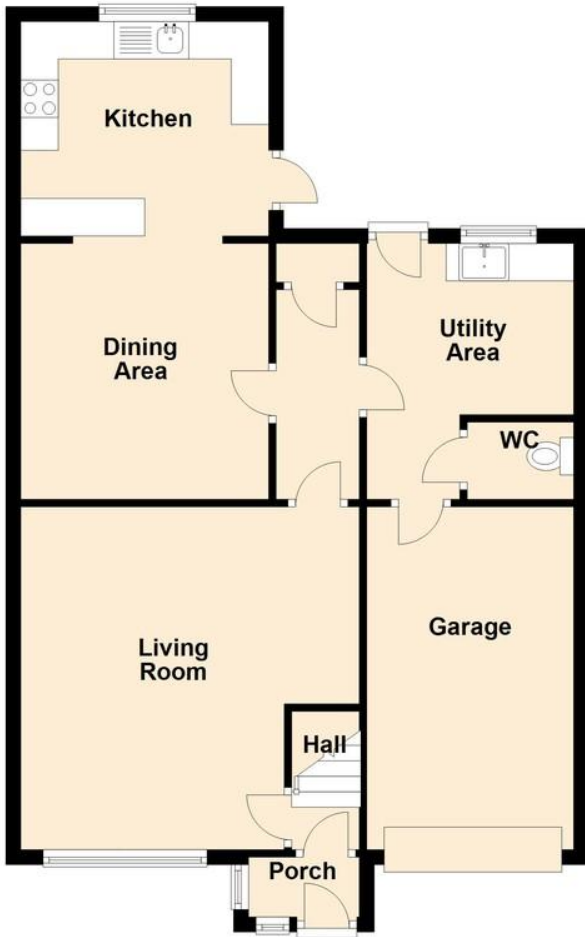
GARDEN

These particulars are accurate to the best of our knowledge but do not constitute an offer or contract. Photos are for representation only and do not imply the inclusion of fixtures and fittings. The floor plans are not to scale and only provide an indication of the layout.



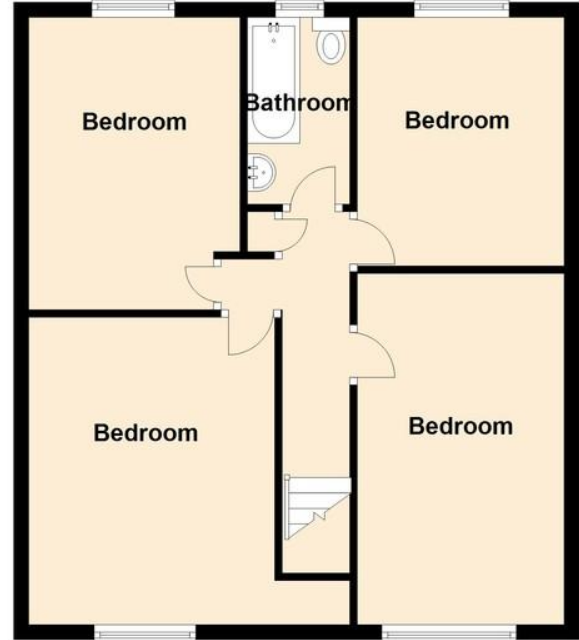
Ground Floor

Approx. 70.8 sq. metres



First Floor

Approx. 57.9 sq. metres



Total area: approx. 128.7 sq. metres

Regulated by RICS

t. 01268 774316
More than an estate agent
www.hairandson.co.uk

Residential Sales
6 High Street
Rayleigh
Essex SS6 7EF

