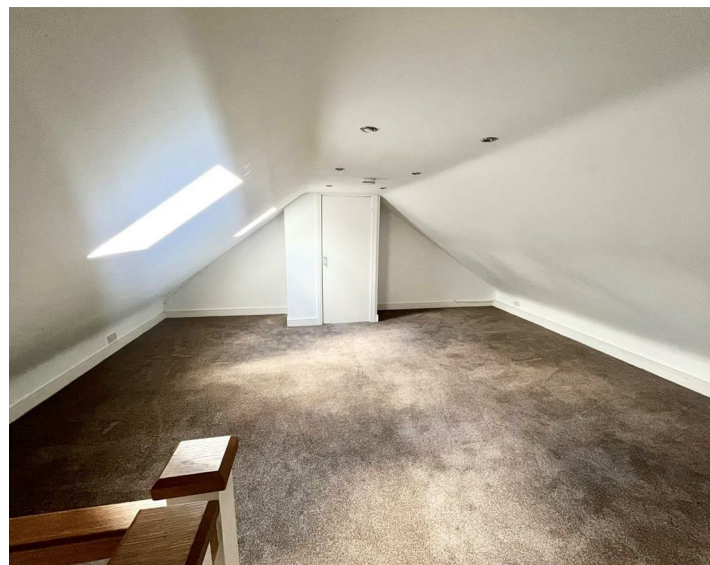
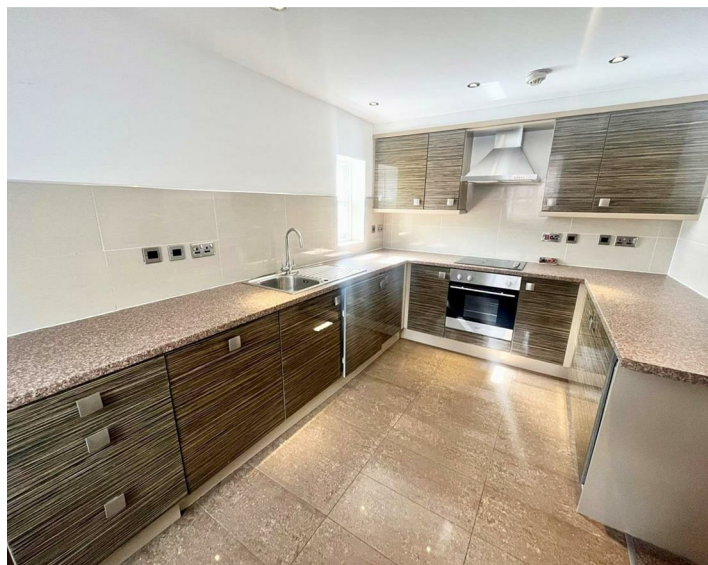




Apt 2 123-129 Lark Lane, Liverpool, L17 8UR
£1,100 PCM

WWW.
cityresidential
.co.uk



About the Property

Available to let is this two bedroom apartment situated in South Liverpool on Lark Lane close to Sefton Park. The property has two double bedrooms, a large hallway with staircase leads up to a spacious living room, off here you enter the modern kitchen and dining area. Lark Lane is an extremely popular and sought after area of the city located adjacent to Sefton Park and a short distance from the City Centre. Lark Lane boasts trendy bars and boasts some of Liverpool's best Cafes and restaurants.

There is no lift in this development. EPC Rating - E. Council Tax Band - C. A deposit amount of £1269.00 is payable upon moving in. Call us now on 0151 231 6100 to arrange a viewing.

- Two Bedroom
- Fully Furnished
- EPC E
- Council Tax Band C



Energy Efficiency Rating

	Current	Potential
Very energy efficient - lower running costs		
(92 plus) A		
(81-91) B		
(69-80) C		69
(55-68) D		
(39-54) E	43	
(21-38) F		
(1-20) G		
Not energy efficient - higher running costs		
England & Wales	EU Directive 2002/91/EC	



City Residential
81/87 Victoria Street, The Old Haymarket, Liverpool L1 6DG
T: 0151 231 6100 F: 0151 231 6105
E: sales@cityresidential.co.uk



WWW.
cityresidential
.co.uk