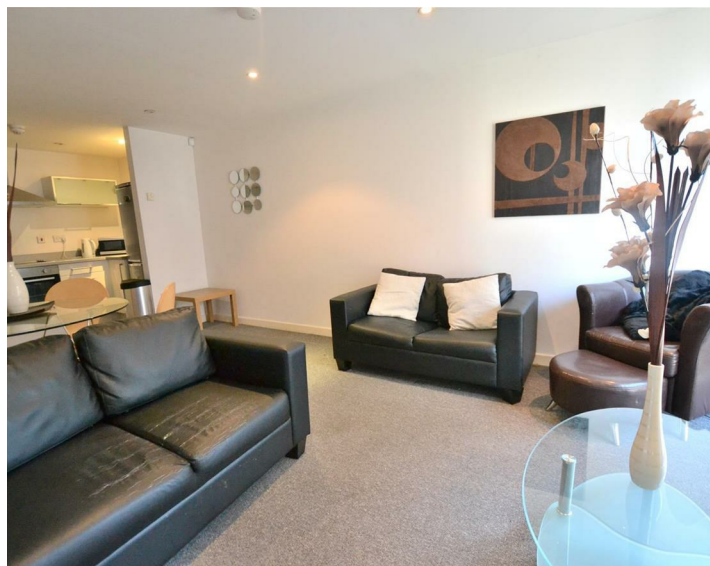




Apt 26 Chandlers Wharf, Liverpool, L1 8DL  
£850 PCM

WWW.  
cityresidential  
.co.uk

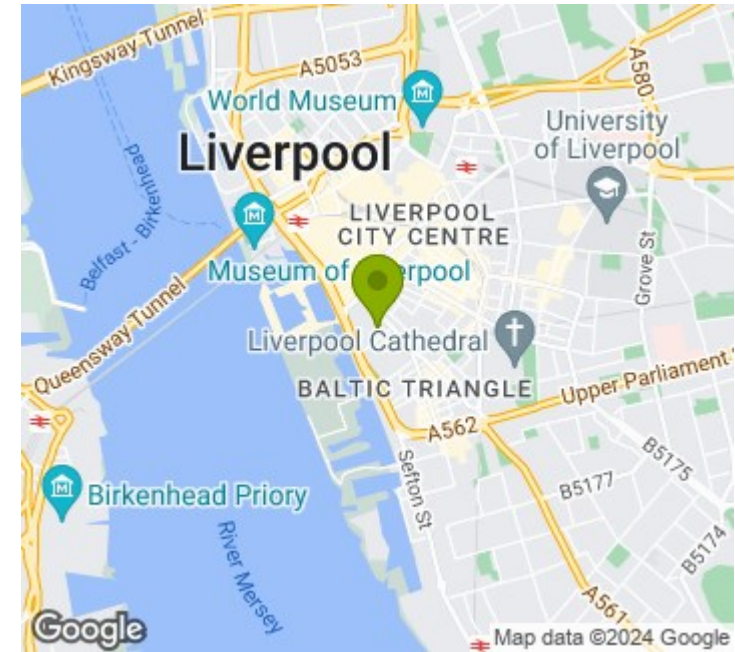




## About the Property

Available to Let is this well presented and spacious one bedroom apartment on the fifth floor of 31 Chandlers Wharf. The apartment is located on Cornhill, just off Park Lane and is centrally located with close proximity to many bars and restaurants, Liverpool One and the Albert Dock. The apartment briefly comprises; entrance hall, open plan living area with fully fitted kitchen, double bedroom and well appointed bathroom. This development is serviced by a lift to all floors. EPC Rating - C. Council Tax Band - B. A deposit amount of £980.00 is payable upon moving in. Call us now on 0151 231 6100 to arrange a viewing.

- EPC Rating - C
- Council Tax Band - B
- Deposit - £980.00



## Energy Efficiency Rating

	Current	Potential
Very energy efficient - lower running costs		
(92 plus) <b>A</b>		
(81-91) <b>B</b>		
(69-80) <b>C</b>	<b>80</b>	<b>81</b>
(55-68) <b>D</b>		
(39-54) <b>E</b>		
(21-38) <b>F</b>		
(1-20) <b>G</b>		
Not energy efficient - higher running costs		
<b>England &amp; Wales</b>	EU Directive 2002/91/EC	



City Residential  
81/87 Victoria Street, The Old Haymarket, Liverpool L1 6DG  
T: 0151 231 6100 F: 0151 231 6105  
E: sales@cityresidential.co.uk



WWW.  
**cityresidential**  
.co.uk