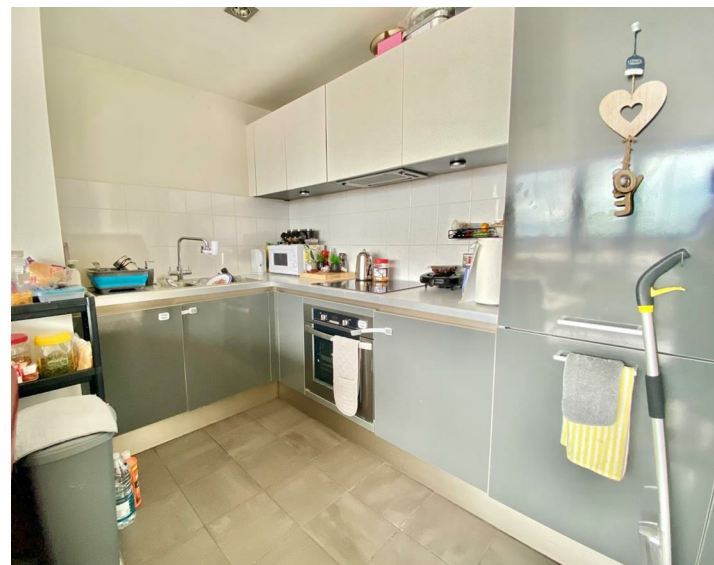




A1107 One Park West, Liverpool, L1 8LP
Asking Price £225,000 Leasehold

WWW.
cityresidential
.CO.UK



About the Property

STUNNING VIEWS

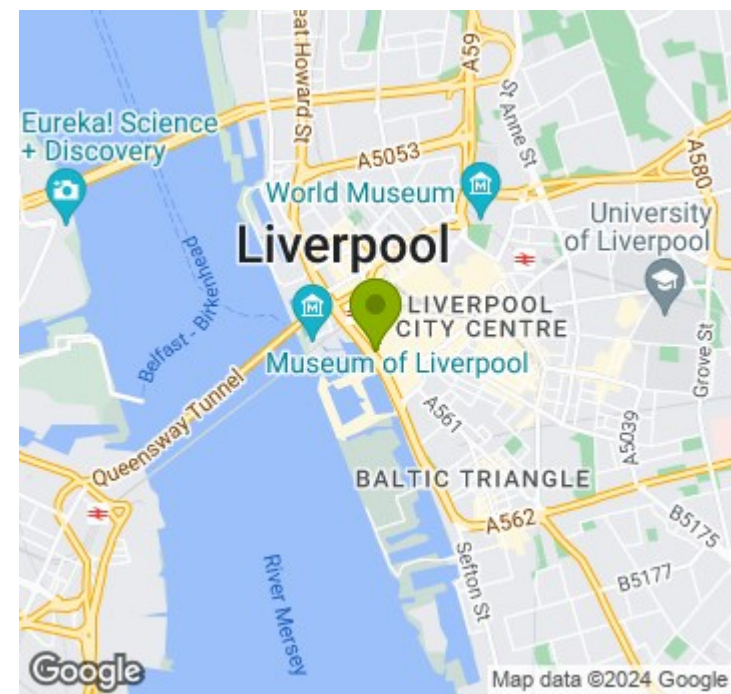
Located in a highly sought after L1 postcode, is this spacious 2 bedroom apartment within the modern and contemporary One Park West development.

Having unrivalled panoramic views across Liverpool's iconic waterfront and convenient access to Liverpool One shopping, with its extensive range of shops, bars and restaurants, there is no better location, for those looking to experience city living and all it has to offer.

The apartment is bright airy and spacious and in brief comprises. Entrance hallway, open plan living space with modern fitted kitchen and integrated appliances. Main bedroom with en-suite shower room, 2nd bedroom and family sized bathroom.

The development also benefits from 24 hour concierge and communal roof garden with views towards the Royal Albert Dock.

Contact the sales team at City Residential today to arrange a viewing!



Energy Efficiency Rating		Current	Potential
Very energy efficient - lower running costs			
(92 plus) A			
(81-91) B			
(69-80) C		73	73
(55-68) D			
(39-54) E			
(21-38) F			
(1-20) G			
Not energy efficient - higher running costs			
England & Wales	EU Directive 2002/91/EC		



City Residential
 81/87 Victoria Street, The Old Haymarket, Liverpool L1 6DG
 T: 0151 231 6100 F: 0151 231 6105
 E: sales@cityresidential.co.uk



WWW.
cityresidential
 .co.uk