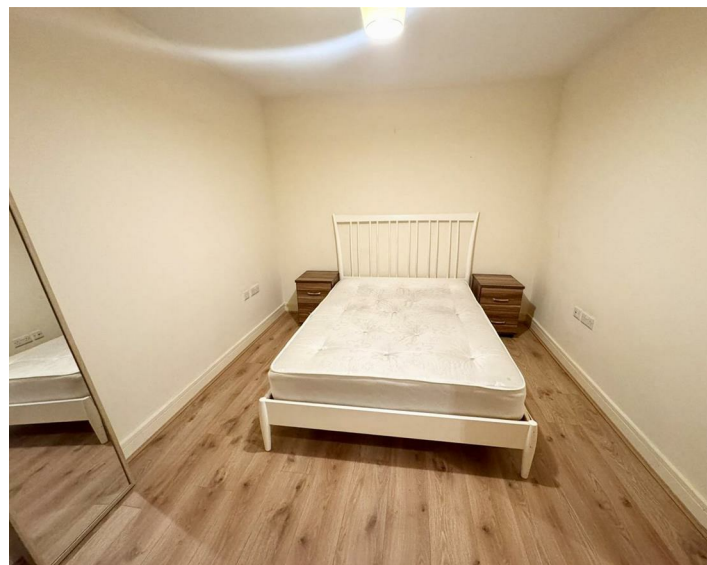




Apt 35 Portside House, Liverpool, L1 5AQ
£800 PCM

www.
cityresidential
.co.uk



About the Property

Available now and situated in the popular Ropewalks district, is this two bedroom third floor apartment in the Portside House development.

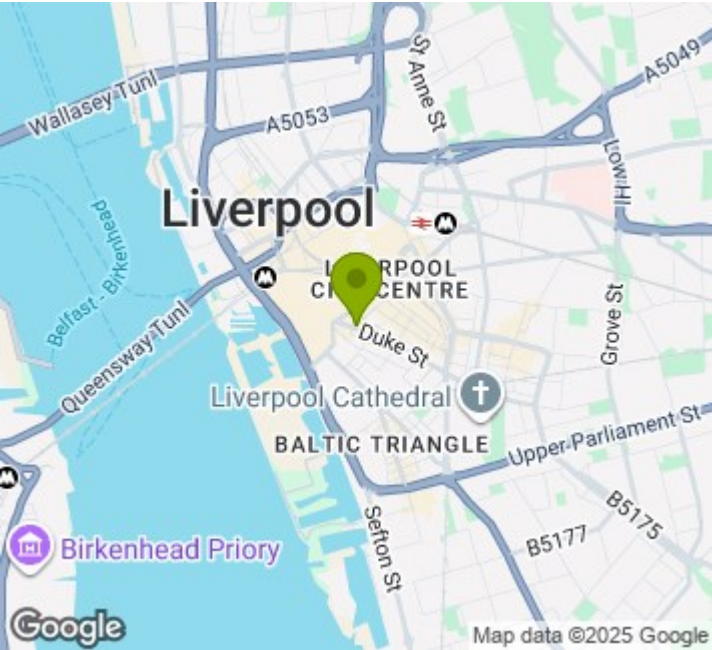
The accommodation comprises of; entrance hall, open plan living/dining room, a master bedroom, second bedroom and family bathroom. The development is serviced by a lift to all floors and secure fob entry into the building.

EPC - C. Council Tax Band - C. A deposit amount of £917.00 is payable upon moving in.

DISCLAIMER: There is ongoing remedial work on the cladding at Portside House, meaning access to opening windows/balconies are may be restricted for Health and Safety reasons as the scaffolding runs up the elevations.

Call us now to arrange a viewing.

- Two Bedroom
- One Bathroom
- No Parking
- Part Furnished
- Immediate Move In



Energy Efficiency Rating

	Current	Potential
Very energy efficient - lower running costs		
(92 plus) A		
(81-91) B		
(69-80) C		
(55-68) D		
(39-54) E		
(21-38) F		
(1-20) G		
Not energy efficient - higher running costs		
England & Wales	EU Directive 2002/91/EC	



City Residential
81/87 Victoria Street, The Old Haymarket, Liverpool L1 6DG
T: 0151 231 6100 F: 0151 231 6105
E: sales@cityresidential.co.uk



WWW.
cityresidential
.co.uk