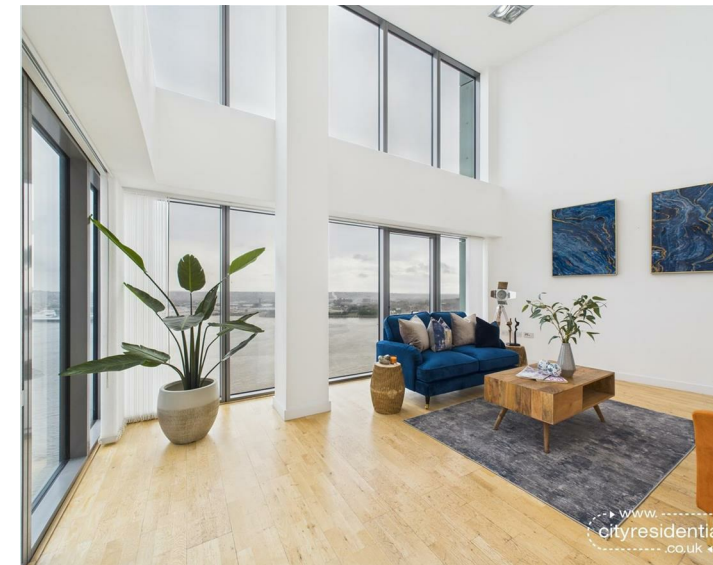
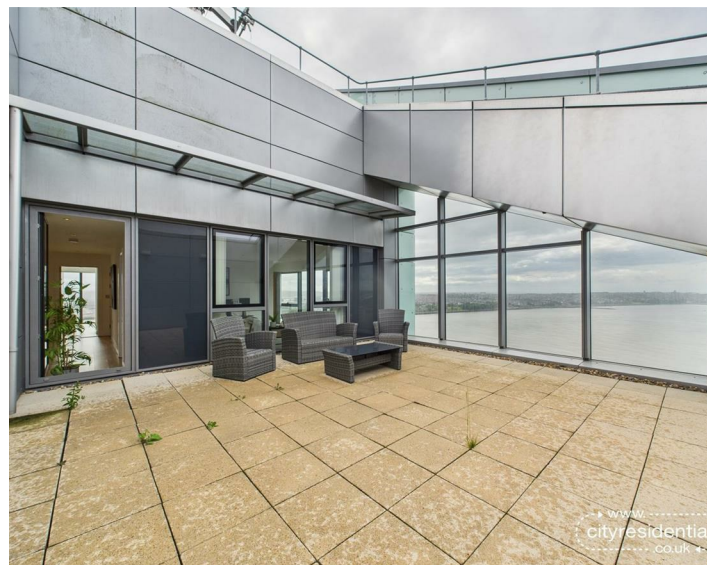


## 201 Alexandra Tower, Liverpool, L3 1BJ

Asking Price £575,000 Leasehold

www.  
cityresidential  
.co.uk





About the Property

Located in Princes Dock, this stunning three-bedroom penthouse duplex apartment at Alexandra Tower offers a unique blend of luxury and comfort. Spanning an impressive 1484 square feet, this residence is perfect for those seeking a spacious and modern living environment.

Upon entering, you are greeted by a generous open-plan kitchen/dining area, that provides a warm and inviting atmosphere, ideal for both relaxation and entertaining. The apartment boasts three large double bedrooms, each designed to offer ample space and natural light, ensuring a restful retreat for all occupants. The master bedroom offers stunning views over Liverpool Waters and the River Mersey and an en-suite bathroom, ensuring convenience and privacy.

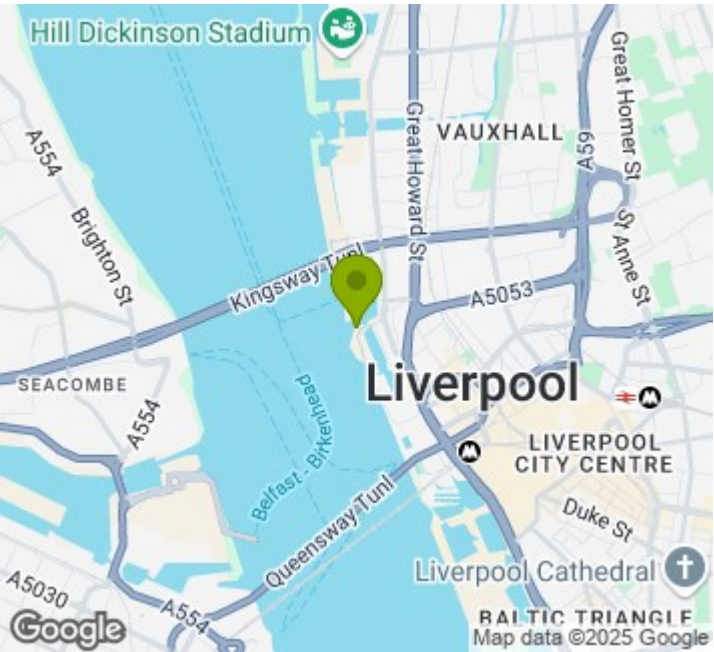
One of the standout features of this property is the large outdoor terrace area, which presents a perfect setting for relaxing in the sun or simply enjoying the breathtaking views of the River Mersey.

The property further benefits from several storage cupboards, a family bathroom and additional w/c.

For those with vehicles, the apartment includes two allocated secure parking spaces, a rare find in such a central location. This added convenience makes city living even more appealing.

In summary, this penthouse duplex apartment at Alexandra Tower is a remarkable opportunity for anyone looking to embrace an urban lifestyle while enjoying the comforts of home. With its prime location, spacious layout, and stunning views, this property is not to be missed.

- Stunning penthouse duplex apartment
- Three spacious double bedrooms
- Large outdoor terrace
- Two secure allocated parking spaces
- Floor to ceiling windows throughout
- Unrivalled views of the city centre and River Mersey



Energy Efficiency Rating

	Current	Potential
Very energy efficient - lower running costs		
(92 plus) <b>A</b>		
(81-91) <b>B</b>		
(69-80) <b>C</b>		
(55-68) <b>D</b>		
(39-54) <b>E</b>		
(21-38) <b>F</b>		
(1-20) <b>G</b>		
Not energy efficient - higher running costs		
<b>England &amp; Wales</b>	EU Directive 2002/91/EC	



City Residential  
81/87 Victoria Street, The Old Haymarket, Liverpool L1 6DG  
T: 0151 231 6100 F: 0151 231 6105  
E: sales@cityresidential.co.uk



WWW.  
cityresidential  
.co.uk