

Flat 3, 40 Kremlin Drive, Liverpool, L13 7BY
£795 Per Month

www.
cityresidential
.co.uk



About the Property

Move In Ready – Stunning One-Bed Apartment in Prime L13 Location!

City Residential is delighted to present this stunning first floor one-bedroom apartment to the rental market, nestled in the highly sought-after Kremlin Drive, L13 area of Liverpool.

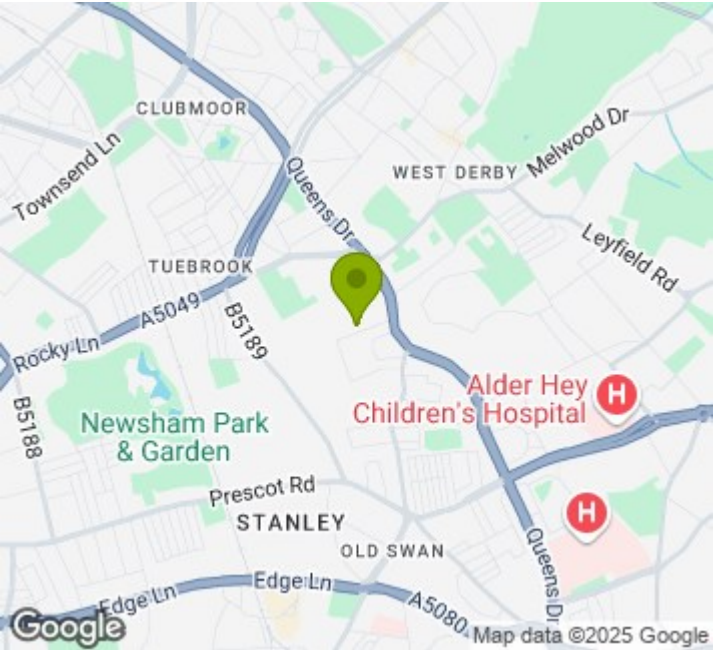
This beautifully presented unfurnished property offers the perfect blank canvas for you to personalise. The accommodation includes a welcoming hallway leading to a bright open-plan living room with exposed brickwork, a modern fitted kitchen, a spacious bedroom, and a contemporary bathroom.

Located in the heart of Kremlin Drive, this home boasts unbeatable transport links. Just 15 minutes from Liverpool City Centre via Edge Lane, with easy access to the M62 for connections to Manchester and Leeds. Regular bus routes (12/13/14X) provide quick access to hospitals and universities for effortless commuting.

Act Fast, High Demand Expected!

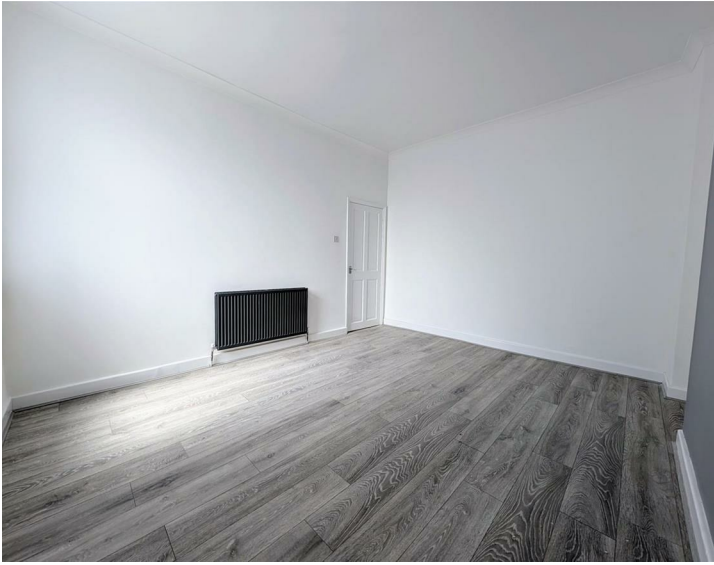
With its prime location, excellent transport links, and impeccable condition, this apartment won't stay available for long. Don't miss out, contact City Residential today to arrange a viewing before it's gone!

- Move In Ready!!
- Must Be Viewed
- Unfurnished First Floor Apartment
- Recently Refurbished
- Excellent Transport Links
- Council Tax Band - A
- Deposit Payable £917
- Energy Performance Rating - C



Energy Efficiency Rating

	Current	Potential
Very energy efficient - lower running costs		
(92 plus) A		
(81-91) B		
(69-80) C	69	80
(55-68) D		
(39-54) E		
(21-38) F		
(1-20) G		
Not energy efficient - higher running costs		
England & Wales	EU Directive 2002/91/EC	



City Residential
81/87 Victoria Street, The Old Haymarket, Liverpool L1 6DG
T: 0151 231 6100 F: 0151 231 6105
E: sales@cityresidential.co.uk



WWW.
cityresidential
.co.uk